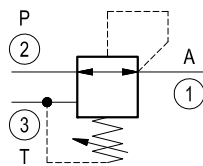
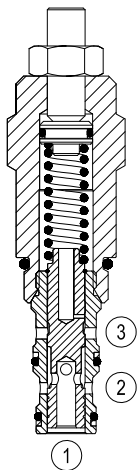


# Pressure reducing and relieving, direct acting spool type

Common cavity, Size 10

VRPR-10A

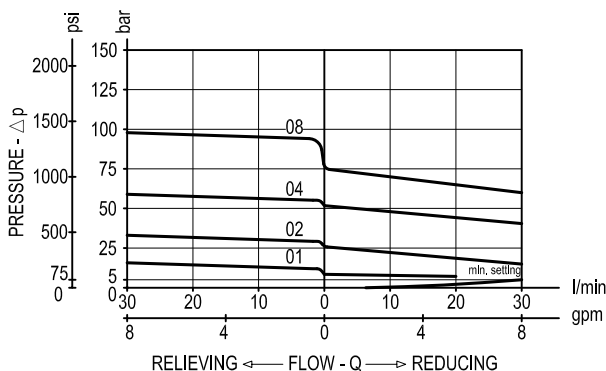
04.95.04 - X - 85 - Z



## Description

Initially, flow passes freely from 2 to 1. When the pressure at 1 exceeds the pressure setting, the valve acts to restrict input flow at 2. This increases the pressure drop through the valve and maintains consistent pressure at 1. The spring chamber is drained at 3 to prevent a build-up of back-pressure against the spool. Additionally, if pressure at 1 rises above the pressure setting, flow is relieved to 3 until the setting is re-attained.

## Performance



## Technical data

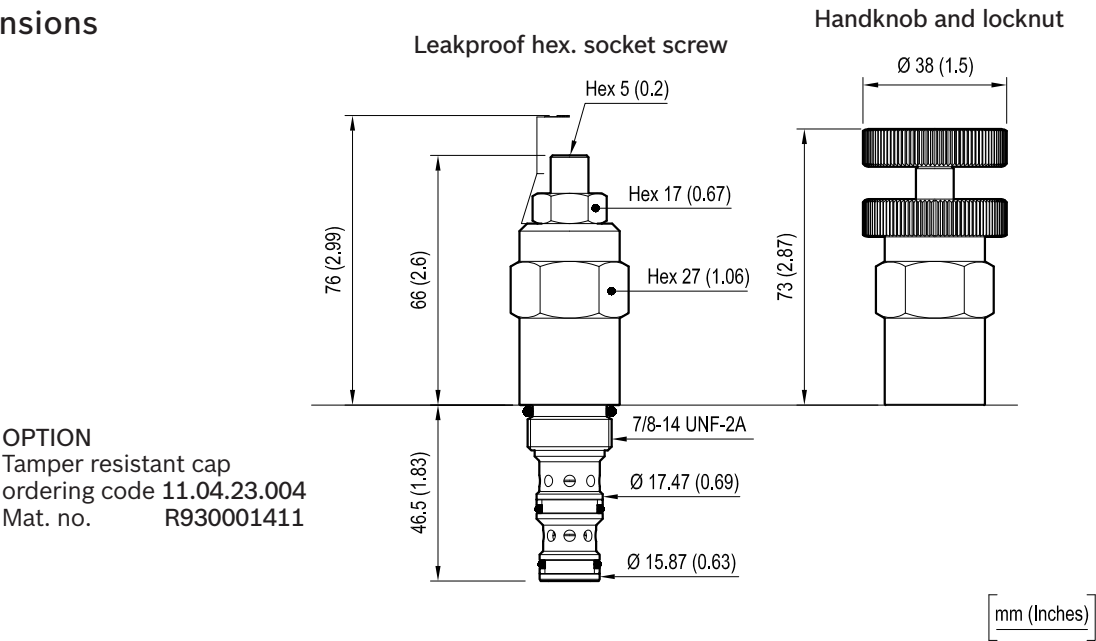
Max. operating pressure port 2 (P)	bar (psi)	350 (5000) 210 (3000) for version Z=01
Max. pressure admitted port 1 (A)	bar (psi)	105 (1500)
Max. flow	l/min. (gpm)	30 (8)
Max. internal leakage (*)	cm <sup>3</sup> /min. (cu.in./min.)	50 (3)
Fluid temperature range	°C (°F)	-30 to 100 (-22 to 212)
Installation torque	Nm (ft-lbs)	41-47 (30-35)
Weight (**)	kg (lbs)	0.26 (0.57)
Cavity		CA-10A-3N see data sheet RE 18325-70
Seal kit (***)	code material no.	RG10A3010520100 R901111369
Fluids		Mineral-based or synthetics with lubricating properties at viscosities of 10 to 500 mm <sup>2</sup> /s (cSt)
Filtration		Nominal value max. 10µm (NAS 8) ISO 4406 19/17/14
Installation		No restrictions
Other general technical data		See data sheet RE 18350-50

(\*) 1 - 3 to 80% of pressure setting

(\*\*) Standard version X=03 type

(\*\*\*) Only external seals for 10 valves

Dimensions



Ordering code

04.95.04	X	85	Z	00	*
----------	---	----	---	----	---

Pressure reducing and relieving,  
direct acting spool type

Adjustments

= 03 Leakproof hex. socket screw

= 04 Handknob and locknut

Common cavity, Size 10

Series O/A to L  
unchanged performances and dimensions

Version and options standard

SPRINGS			
	Adj. press. range bar (psi)	Pressure increase bar/turn (psi/turn)	Std. setting bar (psi) (reduc. mode)
= 01	2-14 (30-200)	2 (29)	8-10 (115-145)
= 02	2-25 (30-350)	3 (44)	7-10 (100-145)
= 04	10-50 (145-725)	7 (102)	35-40 (500-580)
= 08	28-80 (400-1160)	14 (203)	45-50 (650-725)

Note: Special settings available. Contact factory  
authorized representative for ordering code

Type	Material number	Type	Material number
04950403850100A	R901104066	04950404850200A	R901109744
04950403850200A	R901109740	04950404850400A	R901109745
04950403850400A	R901102333	04950404850800A	R901109747
04950403850800A	R901109742		
049504048501000	R901109743		