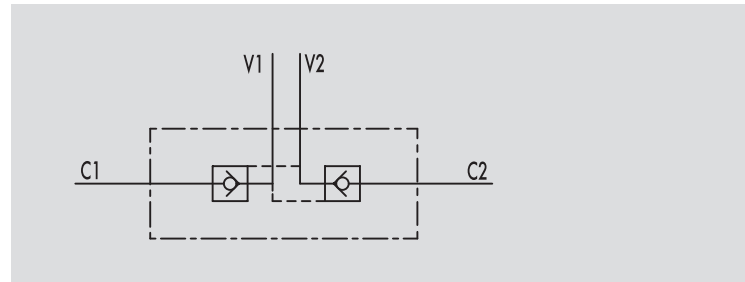
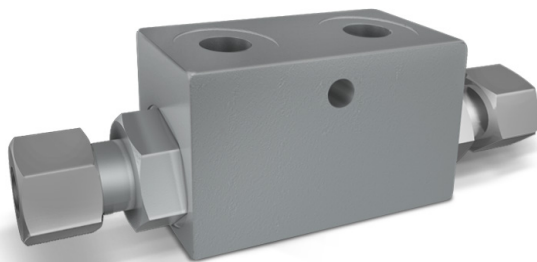


VALVOLE DI BLOCCO PILOTATE A DOPPIO EFFETTO CON 2 CARTUCCE EXTRACORTE (DIN 2353)

TIPO / TYPE

VBPDE 2 CEXC

SCHEMA IDRAULICO
HYDRAULIC DIAGRAM

DOUBLE PILOT OPERATED CHECK VALVES FOR 12mm PIPE MOUNTING (DIN 2353)

IMPIEGO:

Valvola utilizzata per bloccare in posizione un cilindro in entrambi i sensi, consentendo il flusso in una direzione ed impedendolo in senso contrario fino a quando non viene applicata la pressione di pilotaggio. Questa valvola risulta particolarmente adatta per il montaggio su cilindro. A richiesta si fornisce kit di raccordi a misura per il montaggio ad interasse definito.

MATERIALI E CARATTERISTICHE:

Corpo: acciaio zincato.
Componenti interni: acciaio temprato termicamente e rettificato
Guarnizioni: BUNA N standard
Tenuta: a cono guidato. Non ammette trafilamenti.

MONTAGGIO:

Collegare V1 e V2 all'alimentazione e C1 e C2 all'attuatore attraverso appositi raccordi a occhio.

A RICHIESTA

- senza guarnizione OR sul pilota
- molla 1 Bar
- molla 8 Bar

PERDITE DI CARICO

PRESSURE DROPS CURVE

USE AND OPERATION:

Pilot check valves are used to block the actuator in both directions. Flow is free in one direction and blocked in the reverse direction until pilot pressure is applied. They are easily assembled on a cylinder. We supply on request fittings kit for mounting on cylinders with a specific centre distance.

MATERIALS AND FEATURES:

Body: zinc-plated steel.
Internal parts: hardened and ground steel.
Seals: BUNA N standard
Poppet type: any leakage.

APPLICATIONS:

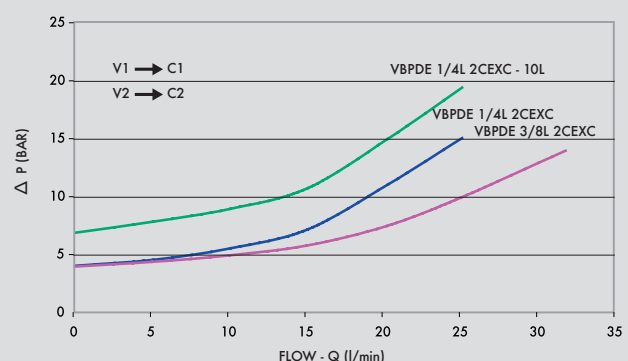
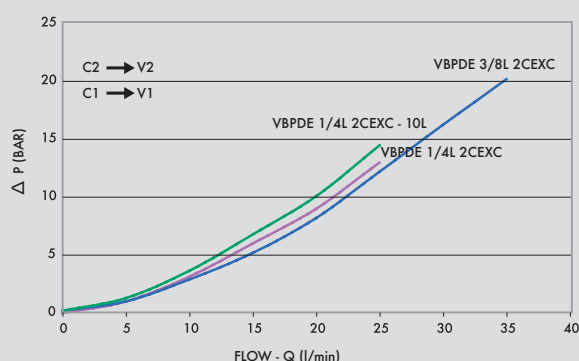
Connect V1 and V2 to the pressure flow and C1 and C2 to the actuator with the pipe.

ON REQUEST

- without seal on pilot piston
- 1 Bar spring
- 8 Bar spring

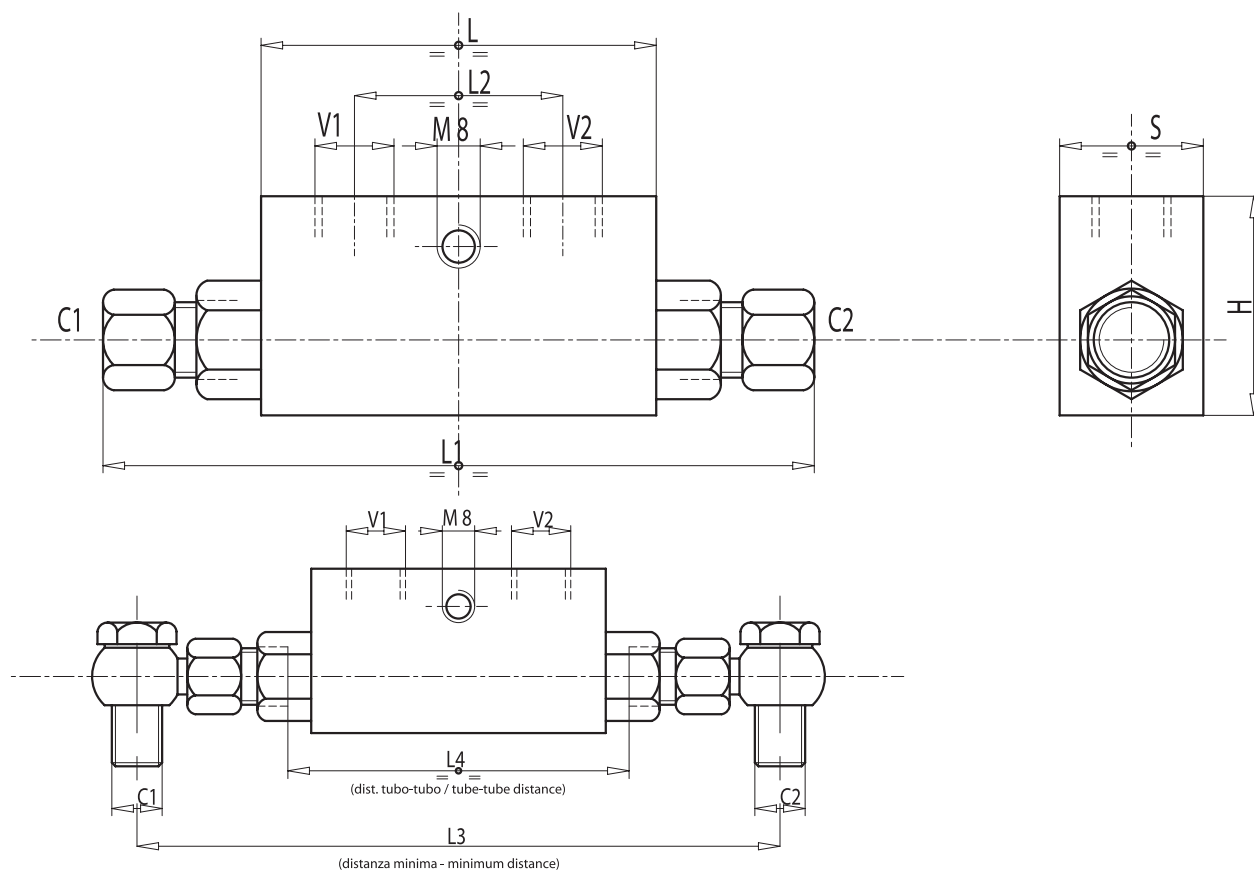
Temperatura olio: 50°C - Viscosità olio: 30 cSt

Oil temperature: 50° C - Oil viscosity: 30 cSt





| CODICE CODE | SIGLA TYPE | RAPP. PILOT PILOT RATIO | PORTATA MAX MAX FLOW Lt. / min | PRESSIONE MAX MAX PRESSURE Bar | PRESSIONE APERTURA CRACKING PRESSURE Bar |
|----------------|---------------------------|----------------------------|--------------------------------------|--------------------------------------|--|
| V0091 | VBPDE 1/4" L 2 CEXC - 10L | 1:5,5 | 20 | 350 | 7 |
| V0090 | VBPDE 1/4" L 2 CEXC | 1:5,5 | 20 | 350 | 4 |
| V0110 | VBPDE 3/8" L 2 CEXC | 1:5,5 | 30 | 350 | 4 |



| CODICE CODE | SIGLA TYPE | V1 - V2 GAS | C1 - C2 mm | L mm | L1 mm | L2 mm | L3 mm | L4 mm | H mm | S kg | PESO WEIGHT kg |
|----------------|---------------------------|----------------|---------------|---------|----------|----------|----------|----------|---------|---------|----------------------|
| V0091 | VBPDE 1/4" L 2 CEXC - 10L | G 1/4" | 10L | 64 | 125 | 36 | 160 | 82 | 40 | 30 | 0,644 |
| V0090 | VBPDE 1/4" L 2 CEXC | G 1/4" | 12L | 64 | 130 | 36 | 160 | 84 | 40 | 30 | 0,648 |
| V0110 | VBPDE 3/8" L 2 CEXC | G 3/8" | 12L | 64 | 130 | 36 | 166 | 84 | 40 | 30 | 0,630 |