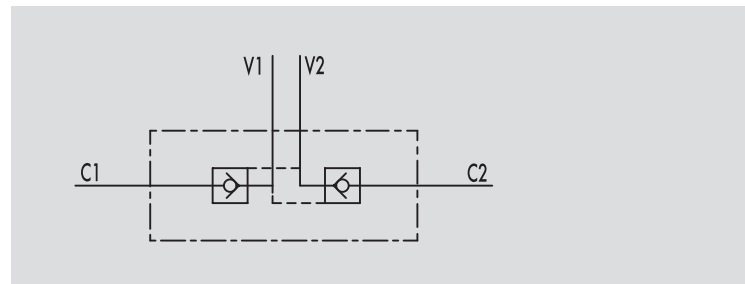


## VALVOLE DI BLOCCO PILOTATE A DOPPIO EFFETTO

TIPO / TYPE  
**VBPDE**SCHEMA IDRAULICO  
HYDRAULIC DIAGRAM**IMPIEGO:**

Valvola utilizzata per bloccare in posizione un cilindro in entrambi i sensi, consentendo il flusso in una direzione ed impedendolo in senso contrario fino a quando non viene applicata la pressione di pilotaggio.

**MATERIALI E CARATTERISTICHE:**

Corpo: acciaio zincato.  
Componenti interni: acciaio temprato termicamente e rettificato  
Guarnizioni: BUNA N standard  
Tenuta: a cono guidato. Non ammette trafilementi.

**MONTAGGIO:**

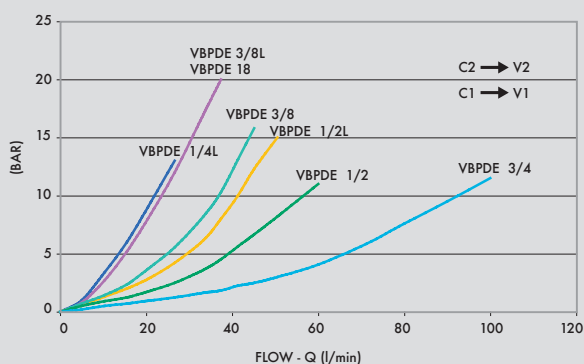
Collegare V1 e V2 all'alimentazione e C1 e C2 all'attuatore.

**A RICHIESTA**

- senza guarnizione OR sul pilota
- molla 1 Bar
- molla 8 Bar

**PERDITE DI CARICO**

PRESSURE DROPS CURVE

**USE AND OPERATION:**

Pilot check valves are used to block the cylinder in both directions. Flow is free in one direction and blocked in the reverse direction until pilot pressure is applied.

**MATERIALS AND FEATURES:**

Body: zinc-plated steel.  
Internal parts: hardened and ground steel.  
Seals: BUNA N standard  
Poppet type: any leakage.

**APPLICATIONS:**

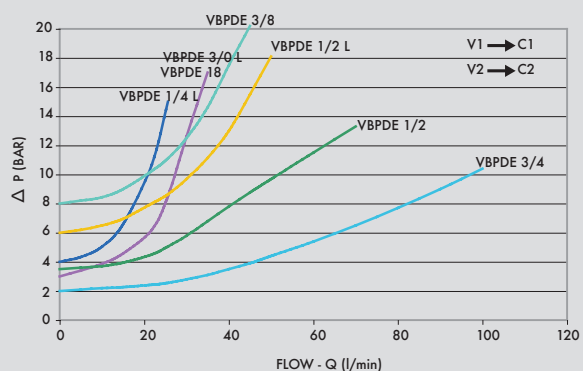
Connect V1 and V2 to the pressure flow and C1 and C2 to the actuator.

**ON REQUEST**

- without seal on pilot piston
- 1 Bar spring
- 8 Bar spring

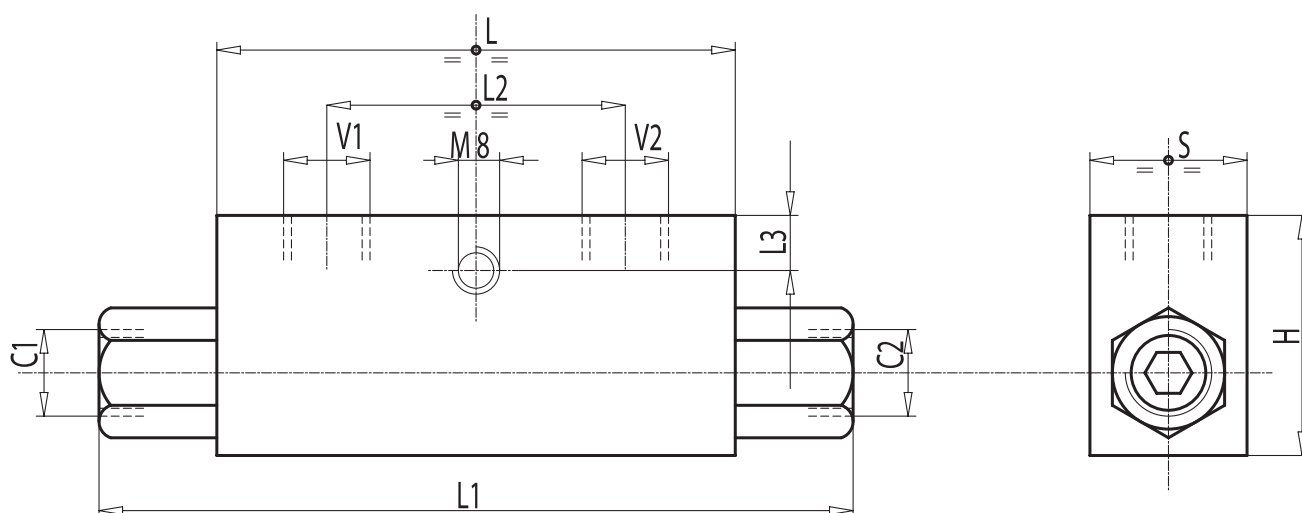
Temperatura olio: 50°C - Viscosità olio: 30 cSt

Oil temperature: 50° C - Oil viscosity: 30 cSt





| CODICE<br>CODE | SIGLA<br>TYPE | RAPP. PILOT<br>PILOT RATIO | PORTATA MAX<br>MAX FLOW<br>Lt. / min | PRESSIONE MAX<br>MAX PRESSURE<br>Bar | PRESSIONE APERTURA<br>CRACKING PRESSURE<br>Bar |
|----------------|---------------|----------------------------|--------------------------------------|--------------------------------------|--|
| <b>V0010</b>   | VBPDE 1/4" L  | 1:5,5                      | 20                                   | 350                                  | 4  |
| <b>V0020</b>   | VBPDE 3/8" L  | 1:5,5                      | 35                                   | 350                                  | 3  |
| <b>V0030</b>   | VBPDE 1/2" L  | 1:5                        | 50                                   | 350                                  | 6  |
| <b>V0050</b>   | VBPDE 3/8 "   | 1:5                        | 45                                   | 350                                  | 8  |
| <b>V0061</b>   | VBPDE 18 L    | 1:5,5                      | 20                                   | 350                                  | 4  |
| <b>V0070</b>   | VBPDE 1/2"    | 1:4                        | 70                                   | 350                                  | 3,5  |
| <b>V0040</b>   | VBPDE 3/4"    | 1:4                        | 100                                  | 300                                  | 2  |



| CODICE<br>CODE | SIGLA<br>TYPE | V1 - V2<br>C1 - C2<br>GAS - MET | L<br>mm | L1<br>mm | L2<br>mm | L3<br>mm | H<br>mm | S<br>mm | PESO<br>WEIGHT<br>kg |
|----------------|---------------|---------------------------------|---------|----------|----------|----------|---------|---------|----------------------|
| <b>V0010</b>   | VBPDE 1/4"L   | G 1/4"                          | 64      | 113      | 36       | 8        | 40      | 30      | 0,636                |
| <b>V0020</b>   | VBPDE 3/8"L   | G 3/8"                          | 80      | 128      | 38       | 8        | 40      | 30      | 0,736                |
| <b>V0030</b>   | VBPDE 1/2" L  | G 1/2"                          | 90      | 142      | 45       | 12,5     | 45      | 35      | 1,042                |
| <b>V0050</b>   | VBPDE 3/8 "   | G 3/8"                          | 90      | 156      | 45       | 12,5     | 45      | 35      | 1,174                |
| <b>V0061</b>   | VBPDE 18 L    | M18X1,5                         | 68      | 118      | 38       | 8        | 40      | 30      | 0,630                |
| <b>V0070</b>   | VBPDE 1/2"    | G 1/2"                          | 80      | 144      | 40       | 18       | 60      | 35      | 1,284                |
| <b>V0040</b>   | VBPDE 3/4"    | G 3/4"                          | 100     | 192      | 46       | 12       | 60      | 40      | 1,916                |