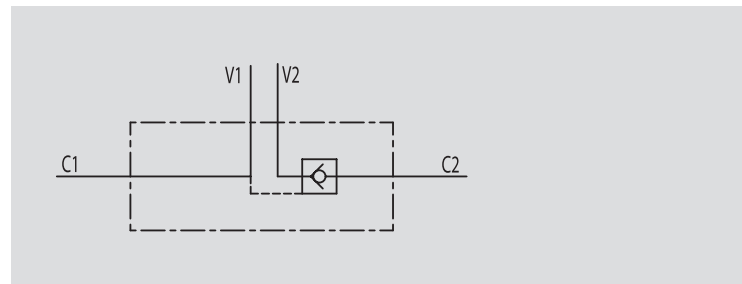


VALVOLE DI BLOCCO PILOTATE A SEMPLICE EFFETTO  
A 4 VIETIPO / TYPE  
**VBPSE**SCHEMA IDRAULICO  
HYDRAULIC DIAGRAMSINGLE PILOT  
OPERATED  
CHECK VALVES**IMPIEGO:**

Valvola utilizzata per bloccare in posizione un cilindro in un solo senso, consentendo il flusso in una direzione ed impedendolo in senso contrario fino a quando non viene applicata la pressione di pilotaggio.

**MATERIALI E CARATTERISTICHE:**

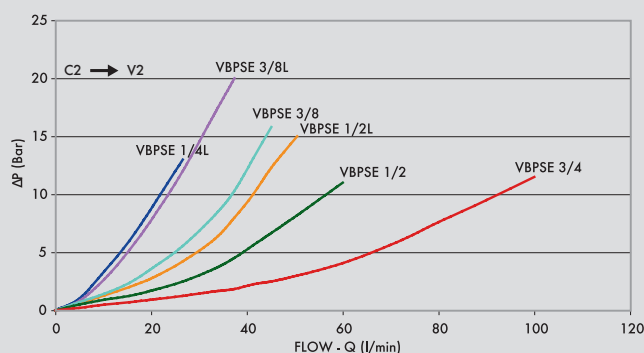
Corpo: acciaio zincato  
Componenti interni: acciaio temprato termicamente e rettificato  
Guarnizioni: BUNA N standard  
Tenuta: a cono guidato. Non ammette trafilamenti

**MONTAGGIO:**

Collegare V1 e V2 all'alimentazione, C1 al lato dell'attuatore con flusso libero e C2 al lato dell'attuatore dove si desidera la tenuta.

**A RICHIESTA**

- senza guarnizione OR sul pilota
- molla 1 Bar
- molla 8 Bar

**PERDITE DI CARICO**  
PRESSURE DROPS CURVE**USE AND OPERATION:**

These valves are used to block the cylinder in one direction. The flow is free in one direction and blocked in the reverse direction until pilot pressure is applied.

**MATERIALS AND FEATURES:**

Body: zinc-plated steel  
Internal parts: hardened and ground steel  
Seals: BUNA N standard  
Poppet type: any leakage.

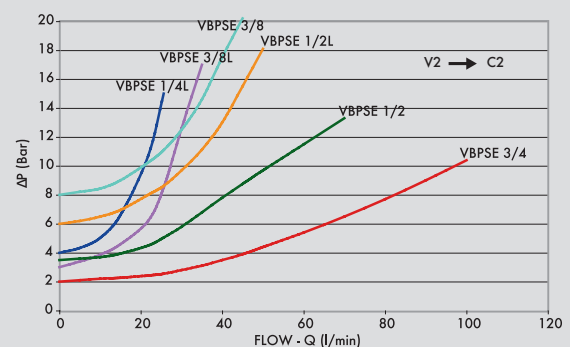
**APPLICATIONS:**

Connect V1 and V2 to the pressure flow, C1 to the free flow side of the actuator and C2 to the actuator's side you want the flow to be blocked.

**ON REQUEST**

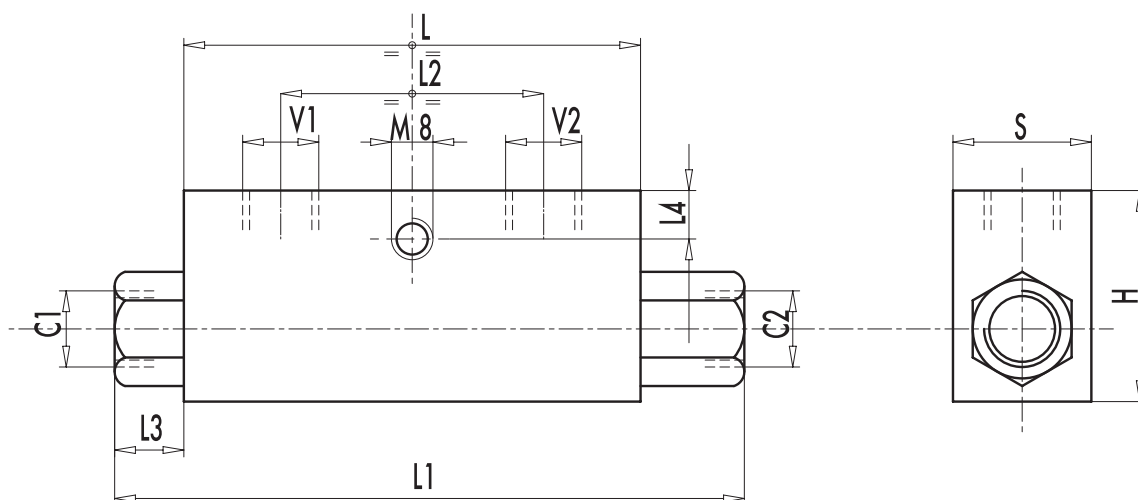
- without seal on pilot piston
- 1 Bar spring
- 8 Bar spring

Temperatura olio: 50°C - Viscosità olio: 30 cSt  
Oil temperature: 50° C - Oil viscosity: 30 cSt





| CODICE<br>CODE | SIGLA<br>TYPE      | RAPP. PILOT<br>PILOT RATIO | PORTATA MAX<br>MAX FLOW<br>Lt. / min | PRESSIONE MAX<br>MAX PRESSURE<br>Bar | PRESSIONE APERTURA<br>CRACKING PRESSURE<br>Bar |
|----------------|--------------------|----------------------------|--------------------------------------|--------------------------------------|--|
| <b>V0220</b>   | VBPSE 1/4" L 4 VIE | 1:5,5                      | 20                                   | 350                                  | 4  |
| <b>V0230</b>   | VBPSE 3/8" L 4 VIE | 1:5,5                      | 35                                   | 350                                  | 3  |
| <b>V0240</b>   | VBPSE 1/2" L 4 VIE | 1:5                        | 50                                   | 350                                  | 6  |
| <b>V0250</b>   | VBPSE 3/8" 4 VIE   | 1:5                        | 45                                   | 350                                  | 8  |
| <b>V0260</b>   | VBPSE 1/2" 4 VIE   | 1:4                        | 70                                   | 350                                  | 3,5  |
| <b>V0245</b>   | VBPSE 3/4" 4 VIE   | 1:4                        | 100                                  | 350                                  | 2  |



| CODICE<br>CODE | SIGLA<br>TYPE      | V1 - V2<br>C1 - C2<br>GAS - MET | L<br>mm | L1<br>mm | L2<br>mm | L3<br>mm | L4<br>mm | H<br>mm | S<br>mm | PESO<br>WEIGHT<br>kg |
|----------------|--------------------|---------------------------------|---------|----------|----------|----------|----------|---------|---------|----------------------|
| <b>V0220</b>   | VBPSE 1/4" L 4 VIE | G 1/4"                          | 64      | 106,5    | 36       | 18,5     | 8        | 40      | 30      | 0,612                |
| <b>V0230</b>   | VBPSE 3/8" L 4 VIE | G 3/8"                          | 80      | 120      | 38       | 16       | 8        | 40      | 30      | 0,706                |
| <b>V0240</b>   | VBPSE 1/2" L 4 VIE | G 1/2"                          | 90      | 133      | 45       | 17       | 12,5     | 45      | 35      | 0,994                |
| <b>V0250</b>   | VBPSE 3/8" 4 VIE   | G 3/8"                          | 90      | 148      | 45       | 25       | 12,5     | 45      | 35      | 1,130                |
| <b>V0260</b>   | VBPSE 1/2" 4 VIE   | G 1/2"                          | 80      | 134      | 40       | 23       | 18       | 60      | 35      | 1,214                |
| <b>V0245</b>   | VBPSE 3/4" 4 VIE   | G 3/4"                          | 100     | 182      | 46       | 36       | 12       | 60      | 40      | 1,792                |