



**BREVINI<sup>®</sup>**

*Motion Systems*

## P.T.O. GEARBOXES

**Technical Catalogue**

January  
**2018**

*web edition*





## Table of contents

<b>Introduction</b>	.....	2
<b>ML32</b>	Speed increaser gearbox for pumps GR.2 with European unified flange.....	4
<b>ML52</b>	Speed increaser gearbox for pumps GR.2/3 with European unified flange .....	6
<b>ML52/SAE A-B</b>	Speed increaser gearbox for pumps SAE A/B .....	8
<b>ML52/B</b>	Speed increaser gearbox with through-shaft for pumps GR.2/3 with European unified flange .....	10
<b>B-585/A</b>	Speed increaser gearbox for pumps SAE A.....	12
<b>B-585/B</b>	Speed increaser gearbox for pumps SAE B.....	14
<b>B-585/P</b>	Speed increaser gearbox for pumps GR.2 / 3.....	16
<b>B-585/U</b>	Speed increaser gearbox for universal flanges .....	18
<b>B580</b>	Speed increaser gearbox for pumps with European unified flange / SAE / ISO .....	20
<b>B600</b>	Speed increaser gearbox for pumps with European unified flange / SAE / ISO .....	22
<b>B502</b>	Splitter for pumps with European unified flange GR 2/3 - SAE A/B .....	24
<b>B582</b>	Splitter gearbox for pumps with European unified flange / SAE / ISO .....	26
<b>B602</b>	Splitter gearbox for pumps with European unified flange / SAE / ISO .....	28
<b>Flanges</b>	Flanges for speed increaser and pump drivers.....	30
<b>RD33/SAE</b>	Speed reducer gearbox SAE A.....	32
<b>RD42/SAE</b>	Speed reducer gearbox SAE A.....	34
<b>RD52/SAE A-B</b>	Speed reducer gearbox SAE A/B.....	36
<b>RD62/SAE A-B</b>	Speed reducer gearbox SAE A/B.....	38
<b>RD62/B</b>	Speed reducer gearbox with PTO for unified GR.2/3 pumps .....	40

© 2018 Dana Brevini S.p.A. all rights reserved. Hydr-App, SAM Hydraulik, Aron, Brevini Hydraulics, BPE Electronics, VPS Brevini, OT Oiltechnology, logos are trademarks or are registered trademarks of Dana Brevini S.p.A. or other companies Dana in Italy and other countries.

The technical features supplied in this catalogue are non binding and no legal action can be taken against such material. Dana Brevini will not be held responsible for information and specifications which may lead to error or incorrect interpretations. Given the continuous technical research aimed at improved technical features of our products, Dana Brevini reserves the right to make change that are considered appropriate without any prior notice. This catalogue cannot be reproduced (in whole or in part) without the prior written consent of Dana Brevini. This catalogue supersedes all previous ones.

Use of the products in this catalogue must comply with the operating limits given in the technical specifications. The type of application and operating conditions must be assessed as normal or in malfunction in order to avoid endangering the safety of people and/or items.

## GENERAL FEATURES

This catalog shows the characteristics of the gearboxes (speed increasers) ML and B series, and gearboxes (speed reducers) RD. Gearboxes are generally used for the connection of hydraulic pump with low speed tractor power take-off.

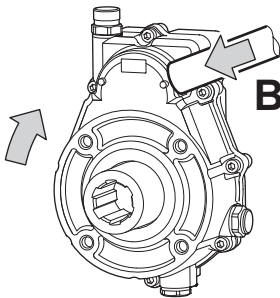
Calculation for gears was done according to UNI ISO 6336.  
Calculation for bearing was done according to ISO 281.

Operating temperature is between -20 °C to + 85 °C.

Materials used for the components of gear have been chosen according to the study of different requirements of resistance to stress and wear. In particular, the gears are made of hardened steel for high endurance. Housing and cover can be made both in aluminum alloy or cast iron, depending on the required code.

Assembly of gearbox must be performed referring to the position of the level indicator, oil drain and vent/fill plug.

Gearboxes have different attachment points that allow an integral attachment to the equipment or machine.



If it is not possible, gearboxes should be bound with a torque arm "B" (see figure). To avoid abnormal stress to the system, the torque arm "B" must be placed as close as possible to the mounting plane (PTO side) of gearbox.

### Determination of the average duration of the gear

The duration of the gearboxes depends on the working conditions and the torques transmitted.

In the technical specifications of each gearbox is shown a graph that allows to verify their duration (in hours) as a function of transmitted average torque.

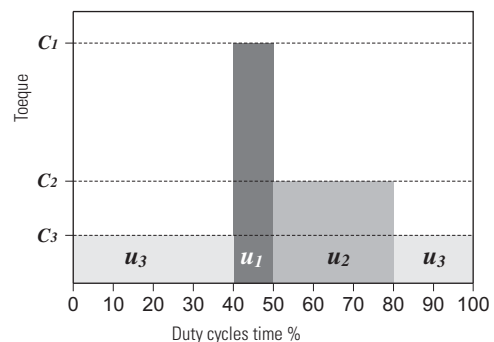
Graphs are output of standard calculations, they do not represent output of experimental tests, however they are a useful tool, as shown by experience achieved by our company in design and manufacture of gearboxes.

In the gearbox technical data table, we have 2 torque values.

**Maximum starting torque ( $C_1$ )** and **maximum torque for continuous duty ( $C_2$ )**.

If gearbox works with torque values that do not exceed  $C_2$ , the average torque  $C_m$  corresponds to value  $C_2$  and duration of the gear is about 3500 hours. In mixed duty cycles, the transmitted torque can reach the limits of the maximum starting torque ( $C_1$ ).

A typical example of mixed duty cycle is shown in the following diagram:



- 10% of the total time ( $u_1$ ) -  $C_1$  torque;
- 30% of the total time ( $u_2$ ) -  $C_2$  torque;
- 60% of the total time ( $u_3$ ) -  $C_3$  torque.

In a mixed duty cycle the value of the average torque ( $C_m$ ) can be calculated with a formula that takes into account the torques transmitted with different duty cycles (as required by standard).

$$C_m = \sqrt[3]{\frac{C_1^3 \cdot u_1 + C_2^3 \cdot u_2 + C_{..}^3 \cdot u_{..}}{(u_1 + u_2 + u_{..})}}$$

Where:

$C_m$  = average torque (pump side);

$C_1$  = maximum starting torque (pump side);

$C_2$  = Maximum torque for continuous duty (pump side)

$C_{..}$  = .. more torque (pump side)

$u_1$  = % duty cycle -  $C_1$  torque

$u_2$  = % duty cycle -  $C_2$  torque

$u_{..}$  = % duty cycles -  $C_{..}$  torque

## GENERAL FEATURES

### Example of calculation of gearboxes duration:

Speed increaser ML32 - transmission ratio 1: 2.5 - rpm 1000

Operating torque::

$C1 = 100 \text{ Nm}$

$C2 = 65 \text{ Nm}$

$C3 = 40 \text{ Nm}$

Duty cycles:

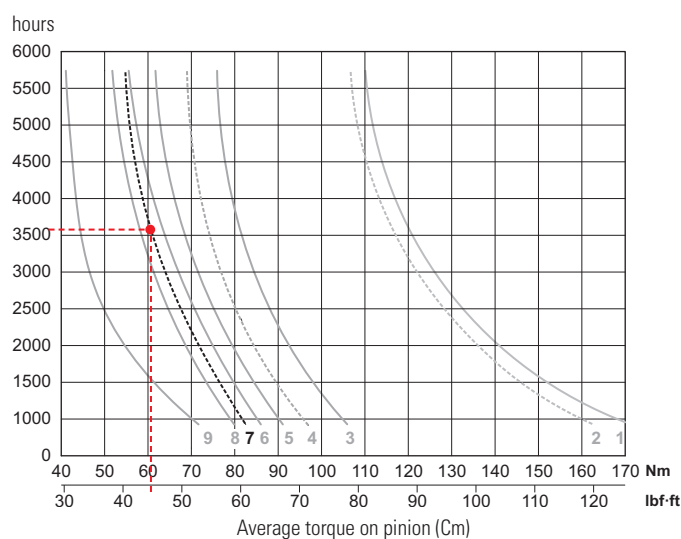
$u1 = 10\%$

$u2 = 30\%$

$u3 = 60\%$

$$C_m = \sqrt[3]{\frac{100^3 \cdot 10 + 65^3 \cdot 30 + 40^3 \cdot 60}{(10 + 30 + 60)}} = 60.4 \text{ Nm}$$

Input rpm		Output (transmission ratio)					
		1:1,5	1:2	1:2,5	1:3	1:3,5	1:3,8
540	curve	1	3	5	6	8	8
	rpm	810	1080	1350	1680	1836	2052
1000	curve	2	4	7	—	—	—
	rpm	1500	2000	2500	—	—	—



In diagram curve number **7** has to be considered (gear ratio **1: 2.5** at **1000 rpm**). The estimated duration of the average torque of **60.4 Nm** is approximately **3600 hours**.

### Lubricating oil

The types of oil, in the following table, are those suggested for the correct lubrication of the gears and are differentiated according to the temperature at which gearboxes have to work.

For high torque, we recommend the use of oil type "EP (extreme pressure)".

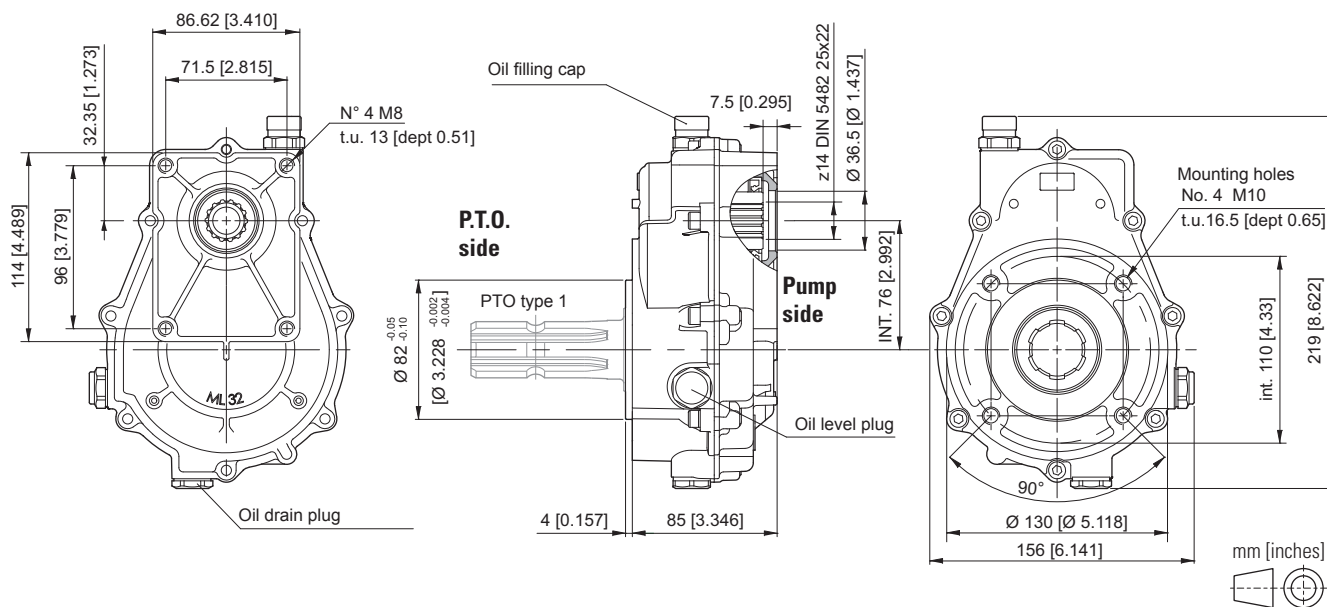
For features that are outside the range of proposed values, please contact our sales department.

#### LUBRICATING OIL IN FUNCTION OF THE SEASONAL TEMPERATURE

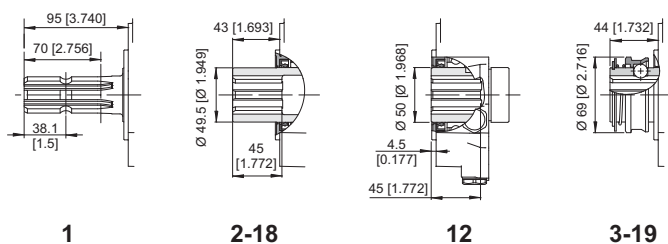
100	150	220			320		Industrial oils (according to ISO 3498 class CKC 220 viscosity according to ISO 3448)
80 W	85 W	90			140		Oils for transmissions and differentials (according to SAE J 183 viscosity according to SAE J 300)
30	40	50			60		Engine Oils (according to SAE J 308 class API GL / GL-5 second viscosity SAE J 306)
-15	-5	+5	+15	+25	+35	+45	°C
5	23	41	59	77	95	113	°F

The gearboxes technical data shows the amount of oil for proper use. It is recommended to replace the lubricating oil after the first 50 hours of operation, after every 1000 hours or every 6 months.

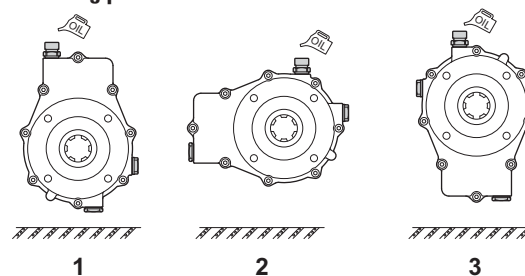
## SPEED INCREASER GEARBOX FOR PUMPS GR.2 WITH EUROPEAN UNIFIED FLANGE



### PT.O.



### Mounting positions



## ORDERING CODE

ML32 - \*\* -1/ \*\*\* - \*

**ML32** = Speed increaser (aluminium body)

### PT.O.

- 1** = Male 1" 3/8 DIN 9611
- 2** = Female 1" 3/8 DIN 9611
- 3** = Female 1" 3/8 DIN 9611 + tightening
- 12** = Female 1" 3/8 DIN 9611 short
- 18** = Female z21 - 16/32 DIN 9611
- 19** = Female z21 - 16/32 DIN 9611 + tightening

**Mounting positions**  
**1 / 2 / 3**

### Transmission ratio

- 1,5** = 1 : 1,5
- 2** = 1 : 2,0
- 2,5** = 1 : 2,5
- 3** = 1 : 3,0
- 3,5** = 1 : 3,5
- 3,8** = 1 : 3,8

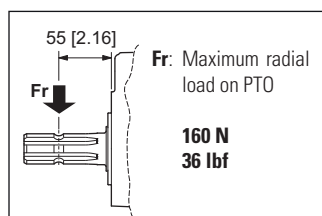
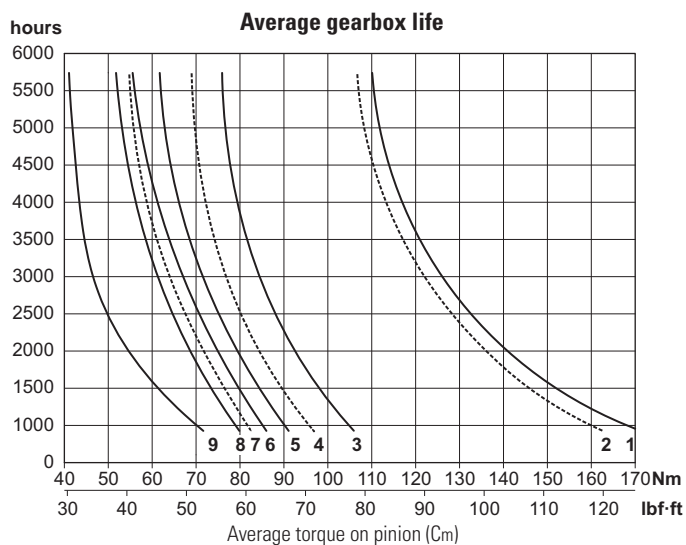
Coupling for pump to be required to our sales department.

## TECHNICAL DATA

Transmission ratio	Maximum torque Nm [lbf·ft]				Weight [lb]
	540 rpm		1000 rpm		
	C1*	C2*	C1*	C2*	
1 : 1.5	190 [140.1]	127 [93.7]	183 [135]	122 [90]	4,3 [9.5]
1 : 2.0	170 [125.4]	85 [62.7]	156 [115.1]	78 [57.5]	4,3 [9.5]
1 : 2.5	178 [131.3]	71 [52.4]	163 [120.2]	65 [47.9]	4,2 [9.3]
1 : 3.0	201 [148.2]	67 [49.4]	—	—	4,1 [9]
1 : 3.5	213 [157.1]	61 [45]	—	—	4 [8.8]
1 : 3.8	182 [134.2]	47 [34.7]	—	—	4 [8.8]

\* Maximum torque on pump:

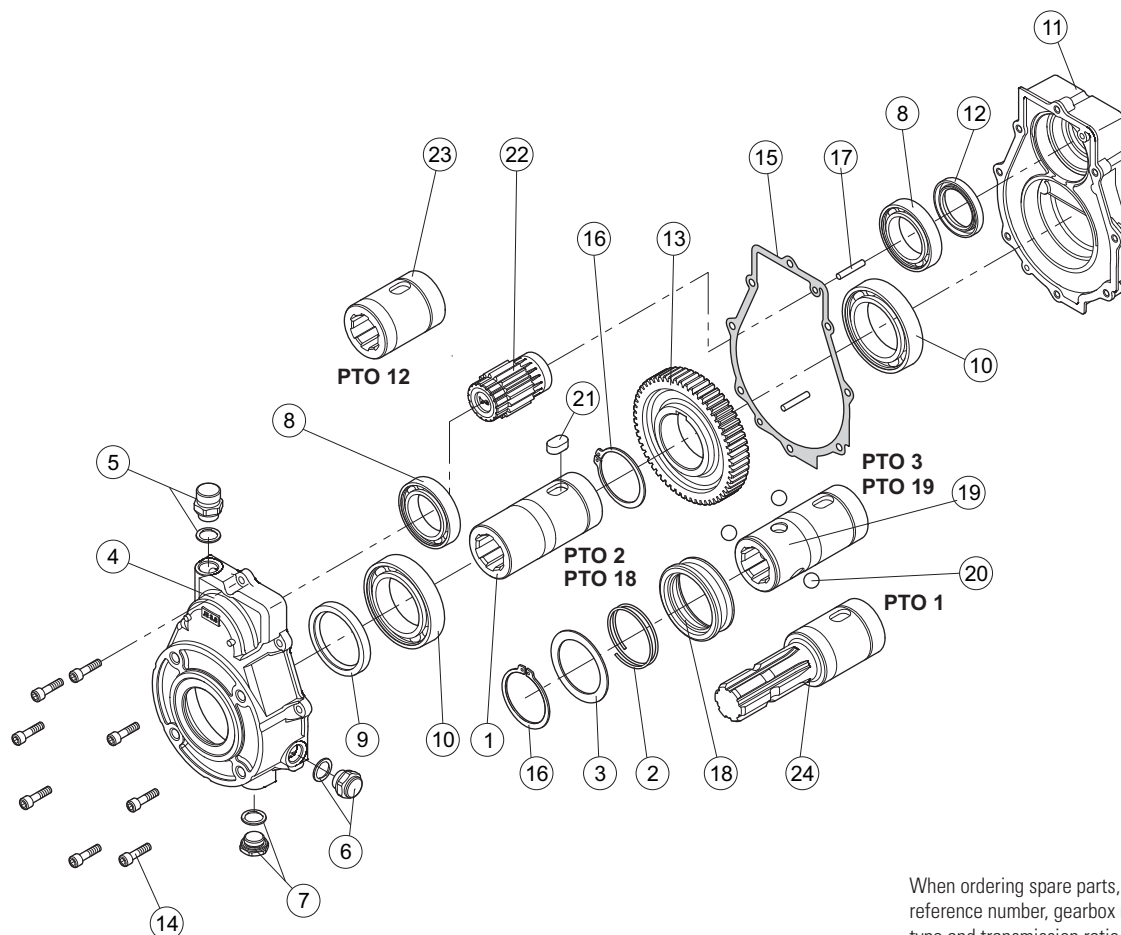
C1= maximum starting torque; C2= maximum torque for continuous duty.



Mounting positions	Oil liters [US gallon]
<b>1</b>	0.15 [0.04]
<b>2</b>	0.11 [0.03]
<b>3</b>	0.09 [0.02]

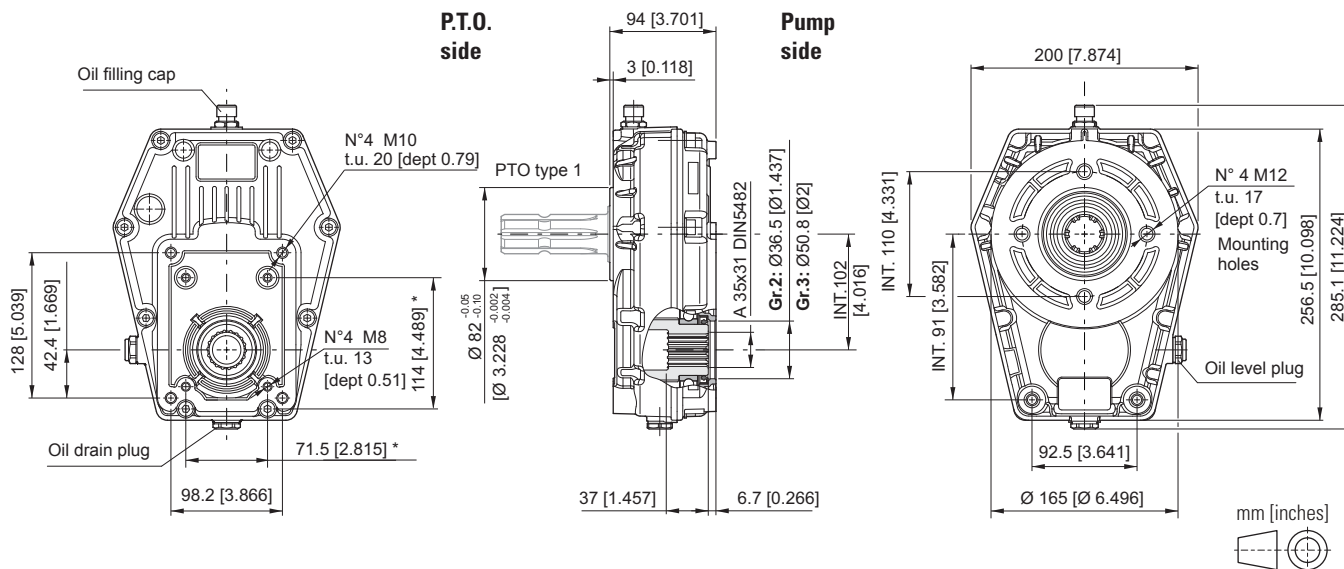
Input rpm		Output (transmission ratio)					
		1 : 1.5	1 : 2.0	1 : 2.5	1 : 3.0	1 : 3.5	1 : 3.8
540	curve	1	3	5	6	8	8
	rpm	810	1080	1350	1680	1836	2052
1000	curve	2	4	7	—	—	—
	rpm	1500	2000	2500	—	—	—

## SPARE PARTS

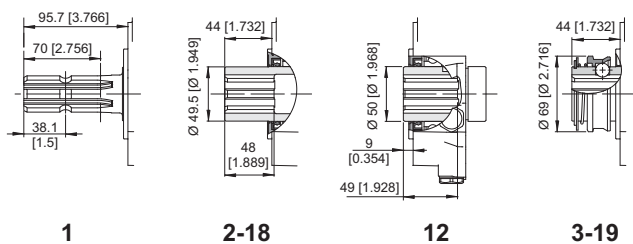


When ordering spare parts, specify reference number, gearbox model, PTO type and transmission ratio.

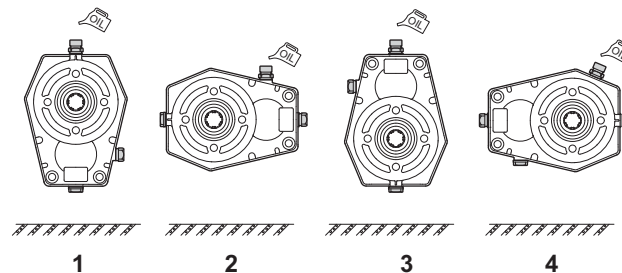
## SPEED INCREASER GEARBOX FOR PUMPS GR.2/3 WITH EUROPEAN UNIFIED FLANGE



### P.T.O.



### Mounting positions



## ORDERING CODE

ML52 - \*\* -1/ \*\*\* - \* - \*

**ML52** = Speed increaser (aluminium body)

### P.T.O.

- 1** = Male 1" 3/8 DIN 9611
- 2** = Female 1" 3/8 DIN 9611
- 3** = Female 1" 3/8 DIN 9611 + tightening
- 12** = Female 1" 3/8 DIN 9611 short
- 18** = Female z21 - 16/32 DIN 9611
- 19** = Female z21 - 16/32 DIN 9611 + tightening

Coupling for pump to be required to our sales department.

### Flange

- Omit for pumps GR.3
- C** = predisposition for pumps GR.2 - GR.3
- S** = SAE A - see page 30
- T** = SAE B - see page 30

### Mounting positions

**1 / 2 / 3 / 4**

### Transmission ratio

- 1** = 1 : 1.0
- 1,5** = 1 : 1.5
- 2** = 1 : 2.0
- 2,6** = 1 : 2.6
- 3** = 1 : 3.0
- 3,4** = 1 : 3.4
- 3,8** = 1 : 3.8

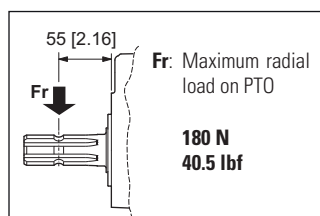


## TECHNICAL DATA

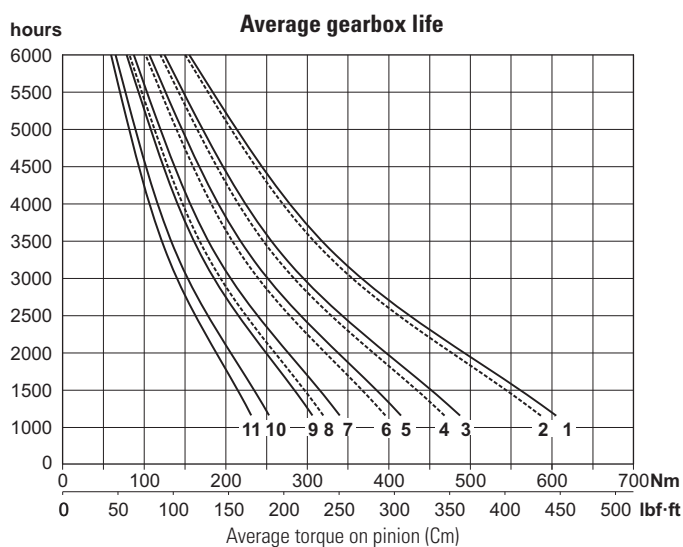
Transmission ratio	Maximum torque Nm [lbf·ft]				Weight kg [lb]
	540 rpm		1000 rpm		
	C1*	C2*	C1*	C2*	
1 : 1.0	604 [445]	318 [235]	585 [431]	308 [227]	9 [19.8]
1 : 1.5	486 [358]	256 [189]	467 [344]	246 [181]	8,4 [18.5]
1 : 2.0	414 [305]	218 [161]	395 [291]	208 [153]	8 [17.6]
1 : 2.6	339 [250]	178 [131]	319 [235]	168 [124]	7,9 [17.4]
1 : 3.0	306 [226]	161 [119]	—	—	7,7 [17]
1 : 3.4	253 [187]	133 [98]	—	—	8,1 [17.9]
1 : 3.8	231 [170]	122 [89]	—	—	8,1 [17.9]

\* Maximum torque on pump:

C1= maximum starting torque; C2= maximum torque for continuous duty.

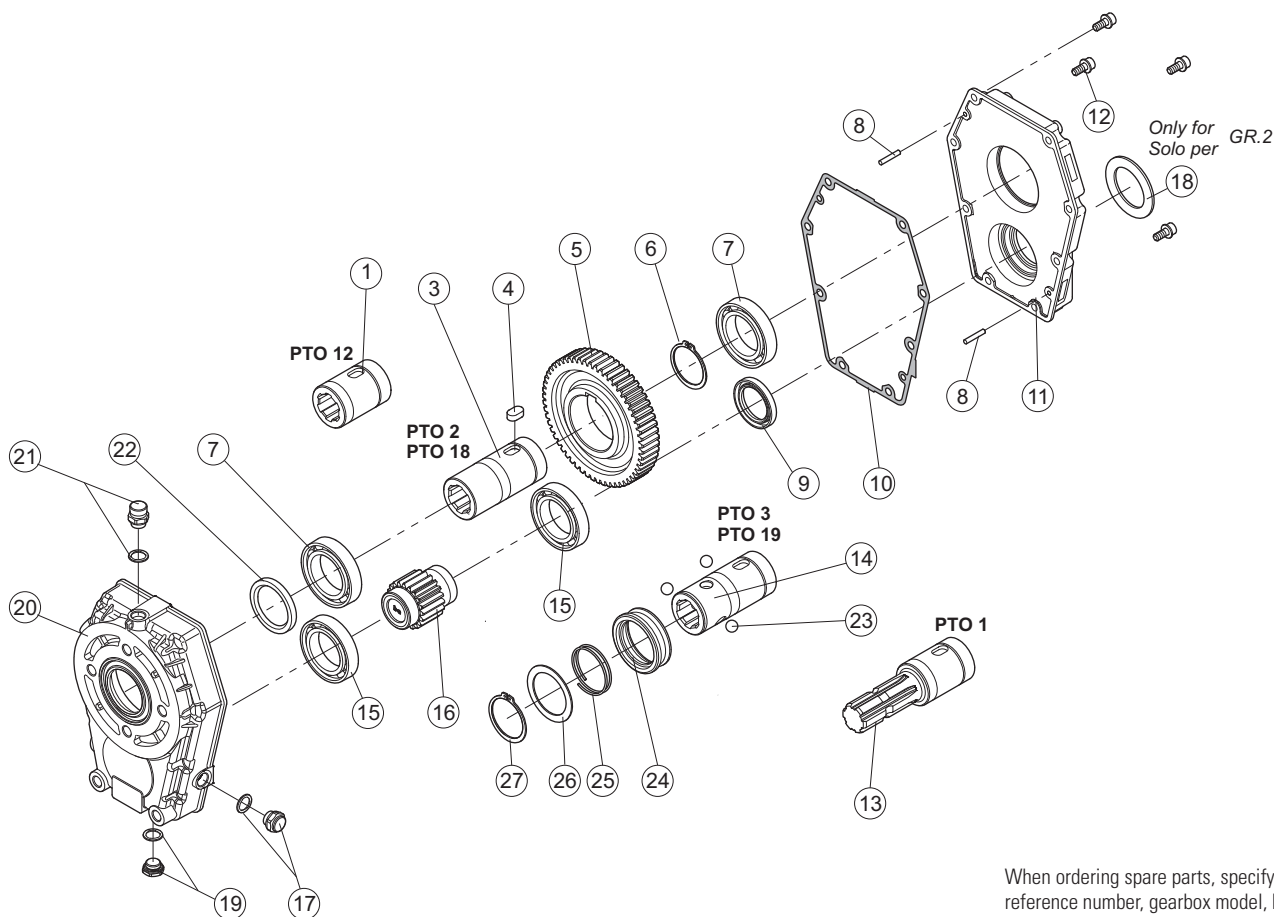


Mounting positions	Oil liters [US gallon]
<b>1</b>	0.34 [0.09]
<b>2</b>	0.80 [0.21]
<b>3</b>	0.52 [0.14]
<b>4</b>	0.75 [0.20]



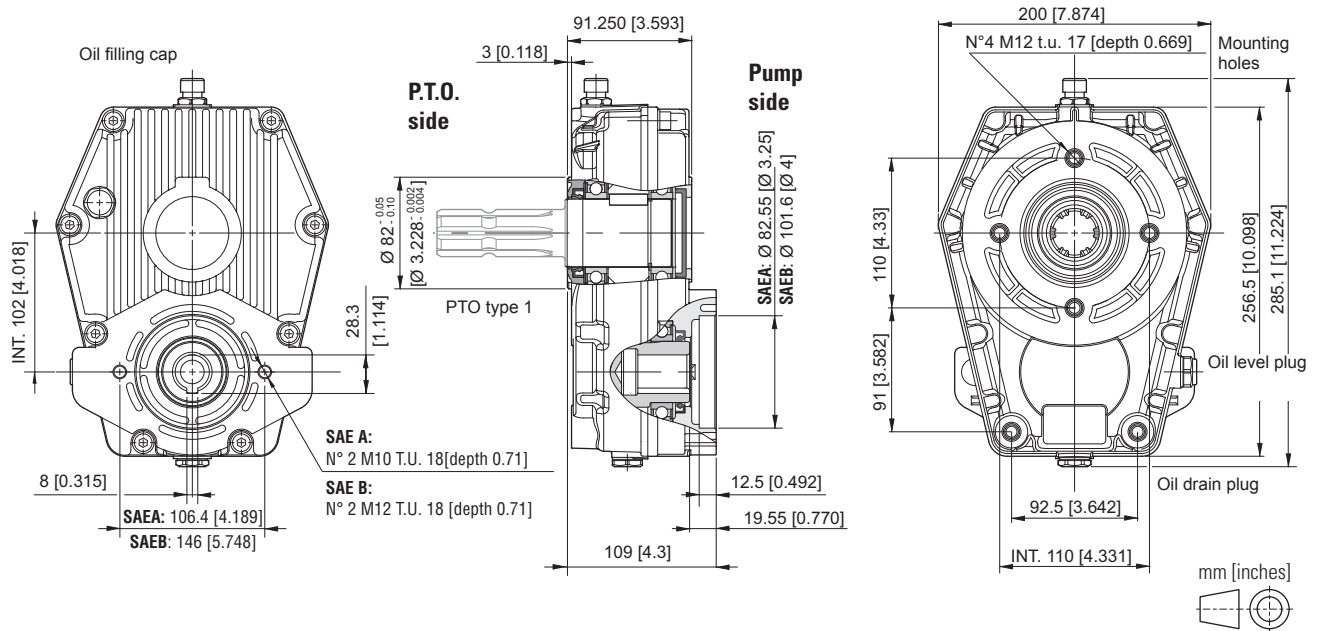
Input rpm		Output (transmission ratio)						
		1 : 1.0	1 : 1.5	1 : 2.0	1 : 2.6	1 : 3.0	1 : 3.4	1 : 3.8
<b>540</b>	curve	1	3	5	7	9	10	11
	rpm	540	810	1080	1408	1620	1836	2057
<b>1000</b>	curve	2	4	6	8	—	—	—
	rpm	1000	1500	2000	2607	—	—	—

## SPARE PARTS

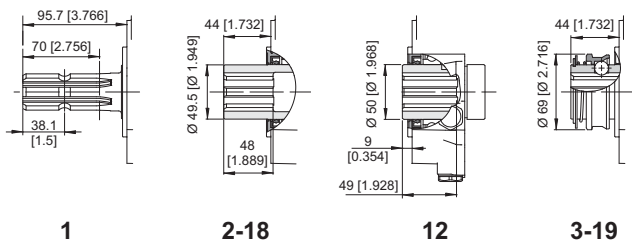


When ordering spare parts, specify reference number, gearbox model, PTO type and transmission ratio.

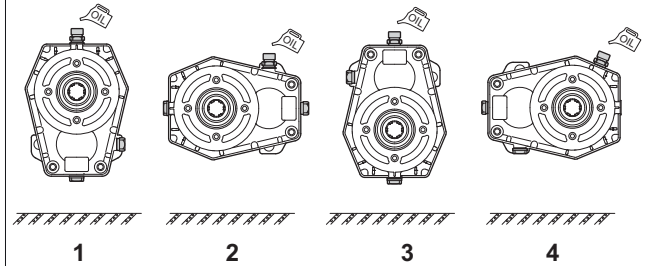
## SPEED INCREASER GEARBOX FOR PUMPS SAE A/B



### P.T.O.



### Mounting positions



## ORDERING CODE

ML52/SAE\* - \*\* -1/ \*\*\* - \*\* - \*

**ML52/SAE A** = Speed increaser (aluminium body)  
**ML52/SAE B** = Speed increaser (aluminium body)

### P.T.O.

**1** = Male 1" 3/8 DIN 9611  
**2** = Female 1" 3/8 DIN 9611  
**3** = Female 1" 3/8 DIN 9611 + tightening  
**12** = Female 1" 3/8 DIN 9611 short  
**18** = Female z21 - 16/32 DIN 9611  
**19** = Female z21 - 16/32 DIN 9611 + tightening

Coupling for pump to be required to our sales department.

**Mounting positions**  
**1 / 2 / 3 / 4**

**Input shaft**  
**9** = Female Ø 25  
**16** = Female Z18 DIN 5482 (35x31)

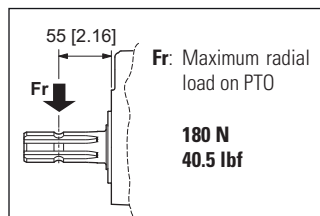
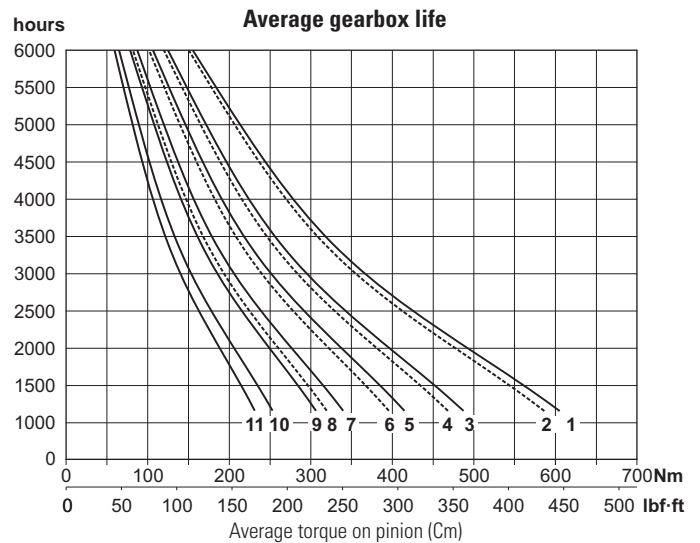
**Transmission ratio**  
**1** = 1 : 1.0  
**1,5** = 1 : 1.5  
**2** = 1 : 2.0  
**2,6** = 1 : 2.6  
**3** = 1 : 3.0  
**3,4** = 1 : 3.4  
**3,8** = 1 : 3.8

## TECHNICAL DATA

Transmission ratio	Maximum torque Nm [lbf·ft]				Weight kg [lb]
	540 rpm C1*	C2*	1000 rpm C1*	C2*	
<b>1 : 1.0</b>	604 [445]	318 [235]	585 [431]	308 [227]	9 [19.8]
<b>1 : 1.5</b>	486 [358]	256 [189]	467 [344]	246 [181]	8,4 [18.5]
<b>1 : 2.0</b>	414 [305]	218 [161]	395 [291]	208 [153]	8 [17.6]
<b>1 : 2.6</b>	339 [250]	178 [131]	319 [235]	168 [124]	7,9 [17.4]
<b>1 : 3.0</b>	306 [226]	161 [119]	—	—	7,7 [17]
<b>1 : 3.4</b>	253 [187]	133 [98]	—	—	8,1 [17.9]
<b>1 : 3.8</b>	231 [170]	122 [89]	—	—	8,1 [17.9]

\* Maximum torque on pump:

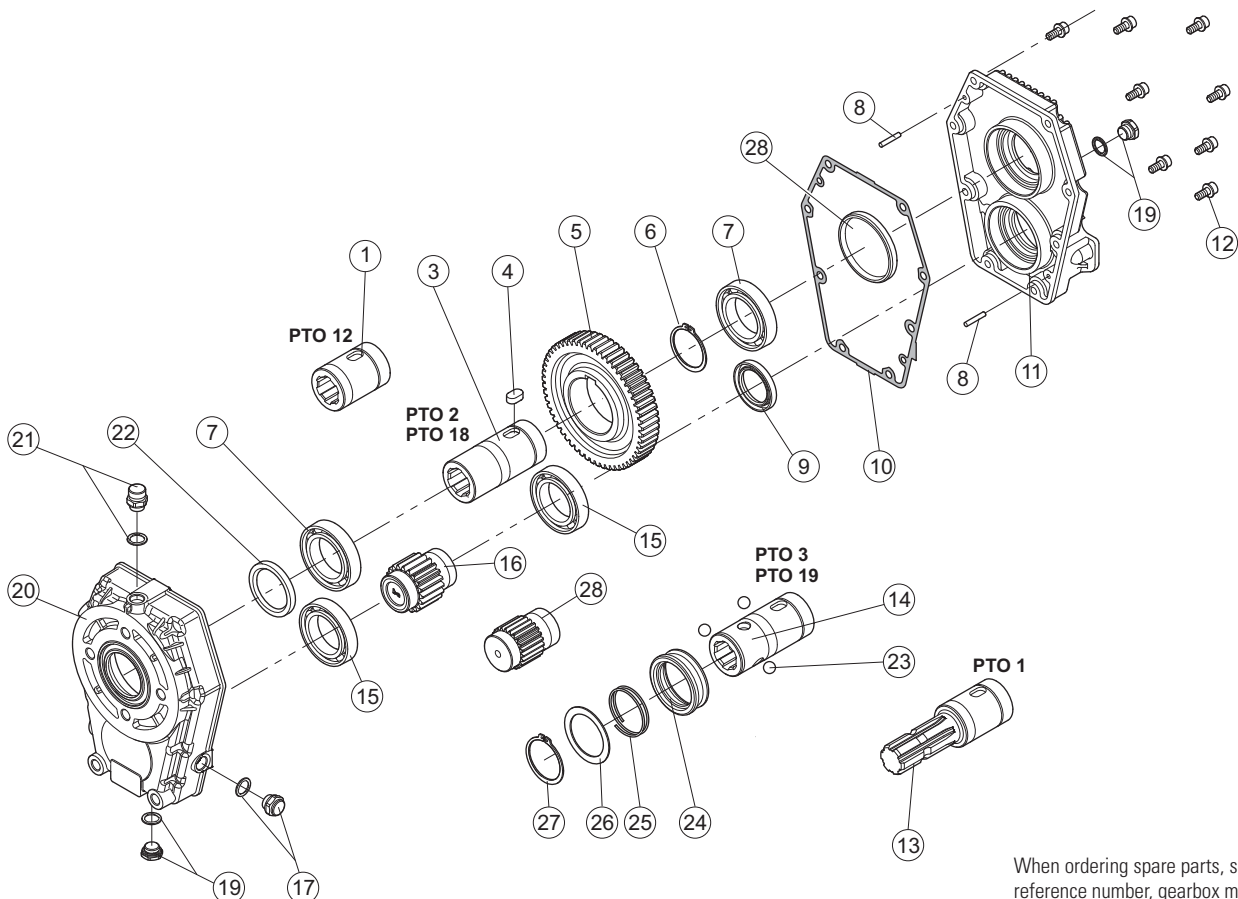
C1= maximum starting torque; C2= maximum torque for continuous duty.



Mounting positions	Oil liters [US gallon]
<b>1</b>	0.34 [0.09]
<b>2</b>	0.80 [0.21]
<b>3</b>	0.52 [0.14]
<b>4</b>	0.75 [0.20]

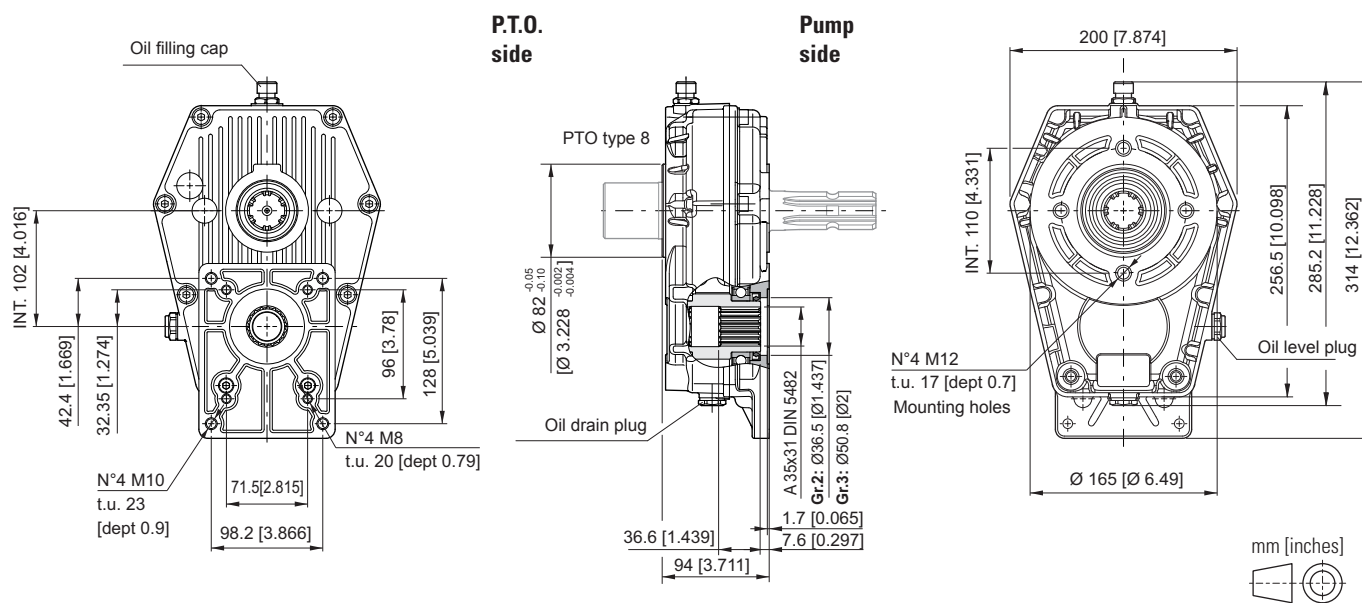
Input rpm		Output (transmission ratio)						
		1 : 1.0	1 : 1.5	1 : 2.0	1 : 2.6	1 : 3.0	1 : 3.4	1 : 3.8
<b>540</b>	curve	1	3	5	7	9	10	11
	rpm	540	810	1080	1408	1620	1836	2057
<b>1000</b>	curve	2	4	6	8	—	—	—
	rpm	1000	1500	2000	2607	—	—	—

## SPARE PARTS

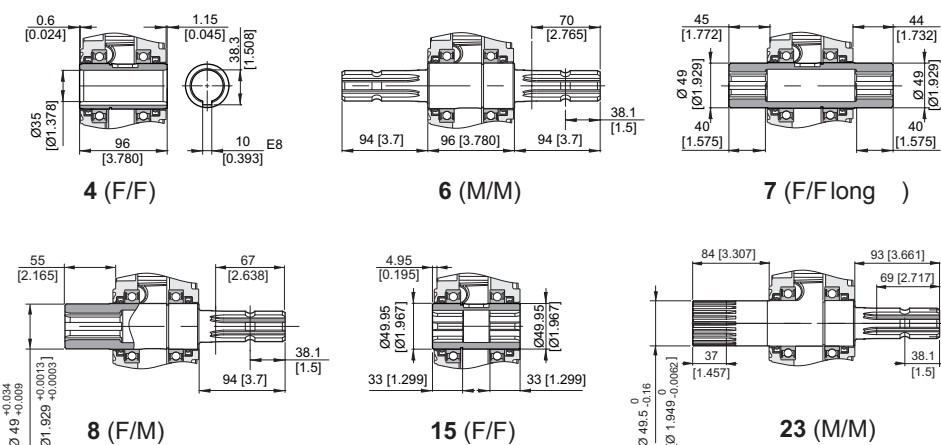


When ordering spare parts, specify reference number, gearbox model, PTO type and transmission ratio.

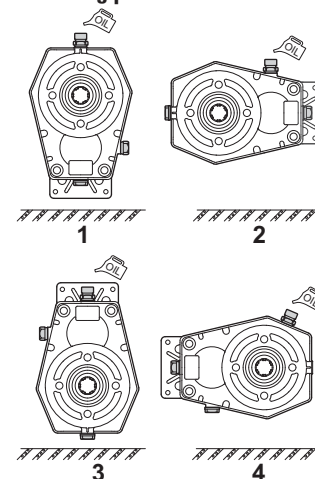
## SPEED INCREASER GEARBOX WITH THROUGH-SHAFT FOR PUMPS GR.2/3 WITH EUROPEAN UNIFIED FLANGE



### P.T.O.



### Mounting positions



### ORDERING CODE

ML52B - \*\* -1/ \*\*\* - \*

**ML52B** = Speed increaser (aluminium body)

#### P.T.O.

**4** = Female/Female Ø 35 short  
**6** = Male/Male 1" 3/8 DIN 9611  
**7** = Female/Female 1" 3/8 DIN 9611  
**8** = Female/Male 1" 3/8 DIN 9611  
**15** = Female/Female 1" 3/8 DIN 9611 short  
**23** = Male 50x45 Z=24 DIN 5482  
 Male 1" 3/8 DIN 9611

#### Mounting positions 1 / 2 / 3 / 4

#### Transmission ratio

**1** = 1 : 1.0  
**1,5** = 1 : 1.5  
**2** = 1 : 2.0  
**2,6** = 1 : 2.6  
**3** = 1 : 3.0  
**3,4** = 1 : 3.4  
**3,8** = 1 : 3.8

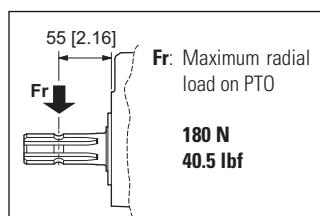
Coupling for pump to be required to our sales department.

## TECHNICAL DATA

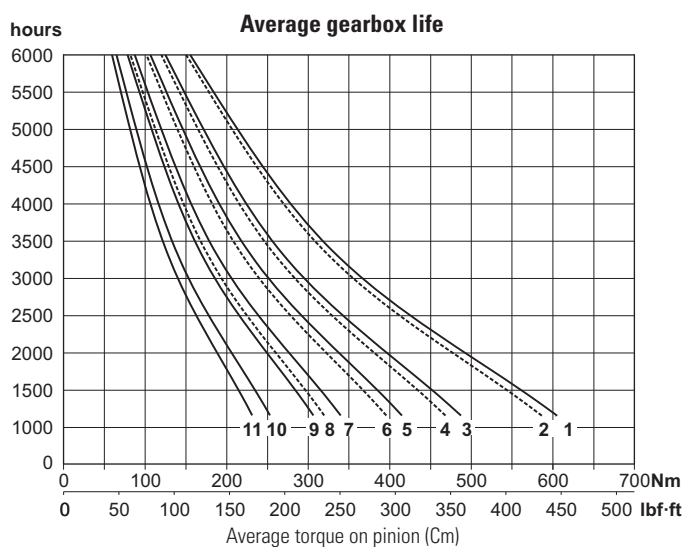
Transmission ratio	Maximum torque Nm [lbf.ft]				Weight kg [lb]
	540 rpm		1000 rpm		
	C1*	C2*	C1*	C2*	
1 : 1.0	604 [445]	318 [235]	585 [431]	308 [227]	9,4 [20.7]
1 : 1.5	486 [358]	256 [189]	467 [344]	246 [181]	9 [19.8]
1 : 2.0	414 [305]	218 [161]	395 [291]	208 [153]	8,6 [19]
1 : 2.6	339 [250]	178 [131]	319 [235]	168 [124]	8,9 [19.6]
1 : 3.0	306 [226]	161 [119]	—	—	8,6 [19]
1 : 3.4	253 [187]	133 [98]	—	—	9 [19.8]
1 : 3.8	231 [170]	122 [89]	—	—	8,4 [18.5]

\* Maximum torque on pump;

C1= maximum starting torque; C2= maximum torque for continuous duty.

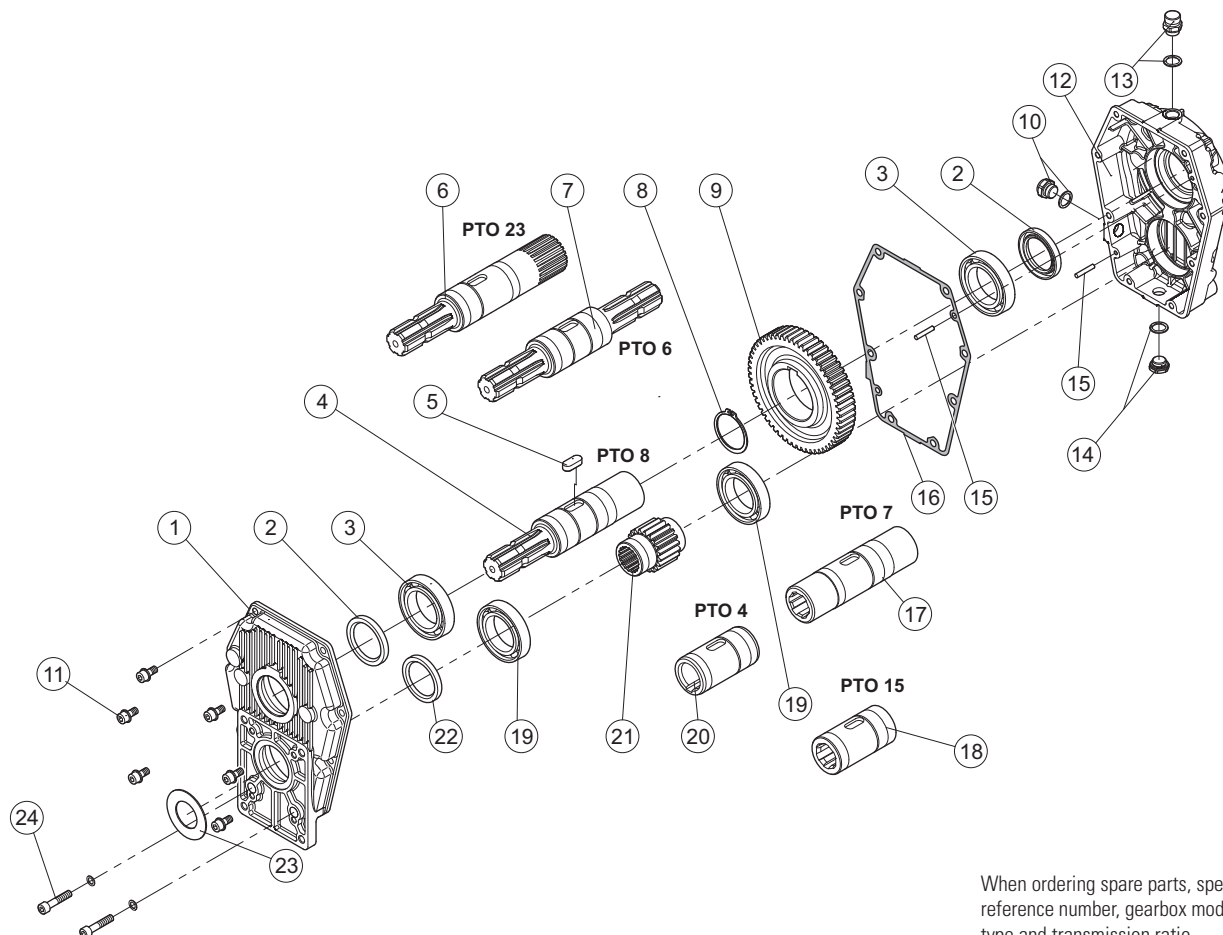


Mounting positions	Oil liters [US gallon]
<b>1</b>	0.34 [0.09]
<b>2</b>	0.80 [0.21]
<b>3</b>	0.52 [0.14]
<b>4</b>	0.75 [0.20]



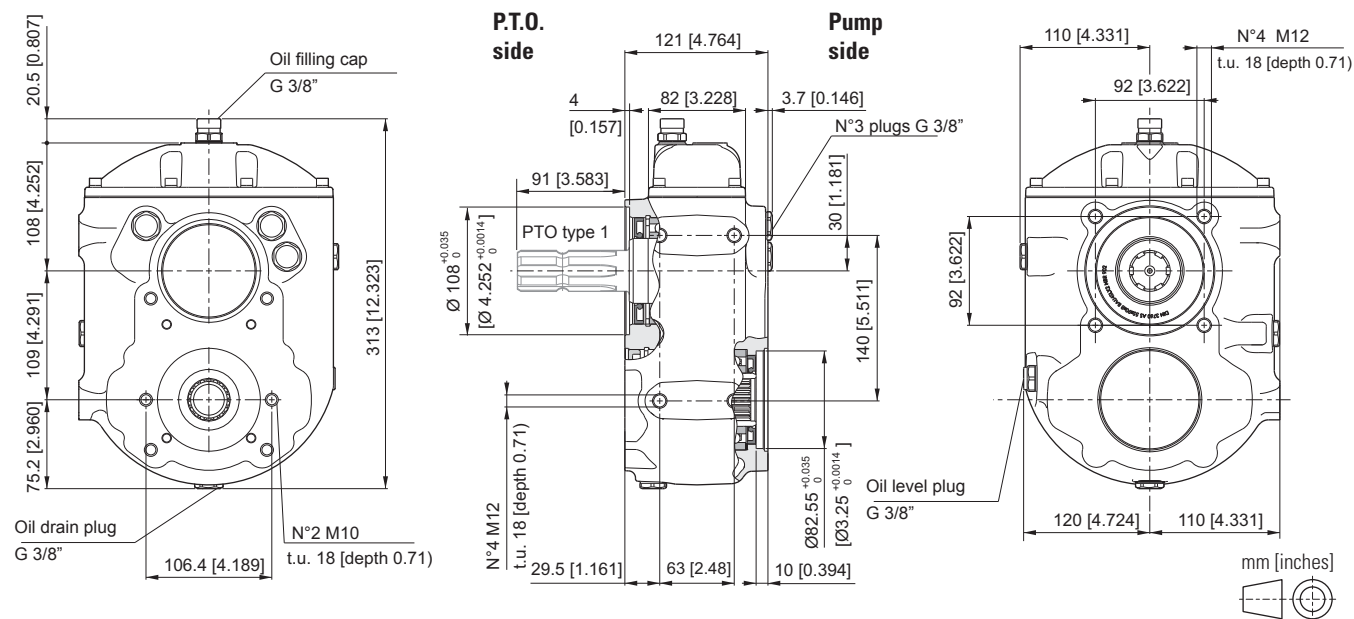
Input rpm		Output (transmission ratio)						
		1 : 1.0	1 : 1.5	1 : 2.0	1 : 2.6	1 : 3.0	1 : 3.4	1 : 3.8
<b>540</b>	curve	1	3	5	7	9	10	11
	rpm	540	810	1080	1408	1620	1836	2057
<b>1000</b>	curve	2	4	6	8	—	—	—
	rpm	1000	1500	2000	2607	—	—	—

## SPARE PARTS

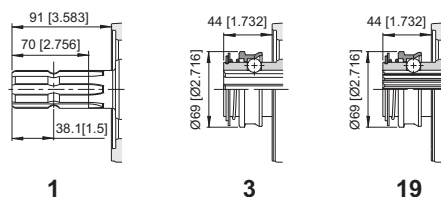


When ordering spare parts, specify reference number, gearbox model, PTO type and transmission ratio.

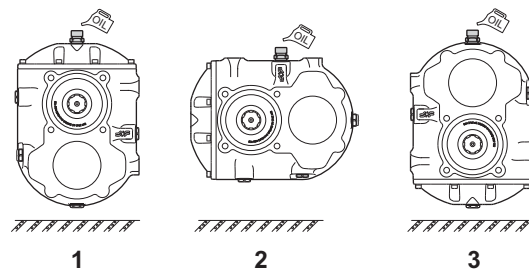
## SPEED INCREASER GEARBOX FOR PUMPS SAE A



### P.T.O.



### Posizioni di montaggio



## ORDERING CODE

B-585/A - \*\* -1/ \*\*\* - \* - \*\* - \*\* - \*\*

**B-585/A** = Speed increaser for pumps SAE A

### P.T.O.

**1** = Male 1" 3/8 DIN 9611  
**3** = Female 1" 3/8 DIN 9611 + tightening  
**19** = Female z21 - 16/32 DIN 9611 + tightening

### Variants

**00** = No variant

### Coupling

**00** = No Coupling  
**02** = Z=18 BF3/2  
**2T** = Z=18 BF3/2T  
**03** = Z=18 BF3

### Pinion internal teeth

**A0** = Z13 16/32"  
**B0** = Z15 16/32"  
**C0** = Z18 DIN 5482  
 (from 1/1.0 to 1/3.8 transmission ratio)

### Mounting positions

**1 / 2 / 3**

### Transmission ratio

<b>1</b> = 1 : 1.0	<b>3,8</b> = 1 : 3.8
<b>1,5</b> = 1 : 1.5	<b>4</b> = 1 : 4.0
<b>2</b> = 1 : 2.0	<b>4,3</b> = 1 : 4.3
<b>2,5</b> = 1 : 2.5	<b>4,5</b> = 1 : 4.5
<b>3</b> = 1 : 3.0	<b>5</b> = 1 : 5.0
<b>3,5</b> = 1 : 3.5	

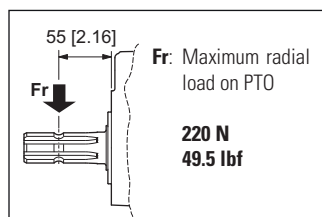
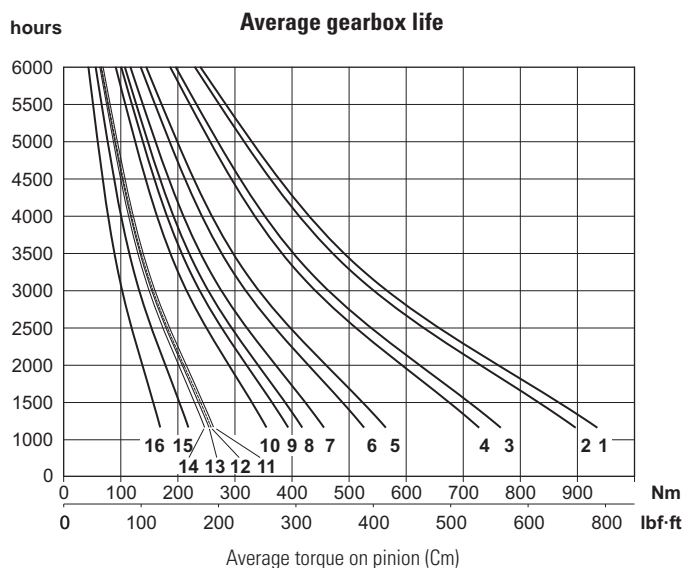


## TECHNICAL DATA

Transmission ratio	Maximum torque Nm [lbf·ft]				Weight kg [lb]
	540 rpm		1000 rpm		
	C1*	C2*	C1*	C2*	
1 : 1.0	910	492	756	408	19.5
	[671]	[363]	[558]	[301]	[43]
1 : 1.5	608	403	481	319	19.5
	[448]	[297]	[355]	[235]	[43]
1 : 2.0	483	297	347	213	19
	[356]	[219]	[256]	[157]	[41.9]
1 : 2.5	322	240	209	156	19
	[237]	[177]	[154]	[115]	[41.9]
1 : 3.0	268	207	160	123	19.5
	[197]	[153]	[118]	[91]	[43]
1 : 3.5	228	137	—	—	19.5
	[168]	[101]			[43]
1 : 3.8	213	136	—	—	19.5
	[157]	[100]			[43]
1 : 4.0	201	134	—	—	20
	[148]	[99]			[44]
1 : 4.3	192	130	—	—	20
	[142]	[96]			[44]
1 : 4.5	174	115	—	—	21
	[128]	[85]			[46.3]
1 : 5.0	157	89	—	—	22
	[116]	[66]			[48.5]

\* Maximum torque on pump:

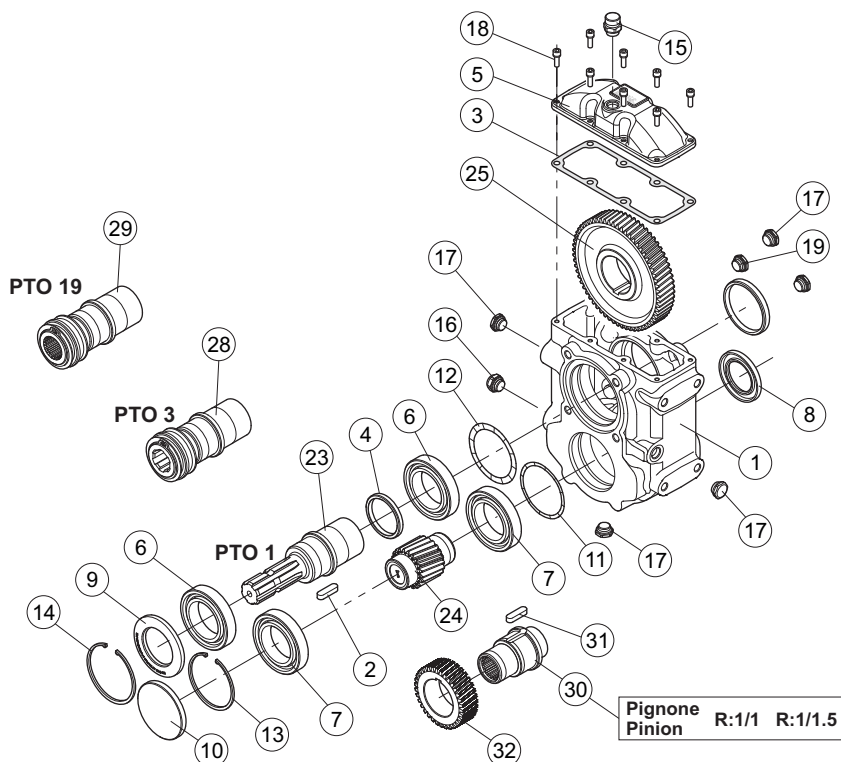
C1= maximum starting torque; C2= maximum torque for continuous duty.



Mounting positions	Oil liters [US gallon]
<b>1</b>	1.4 [0.37]
<b>2</b>	1.6 [0.42]
<b>3</b>	1.4 [0.37]

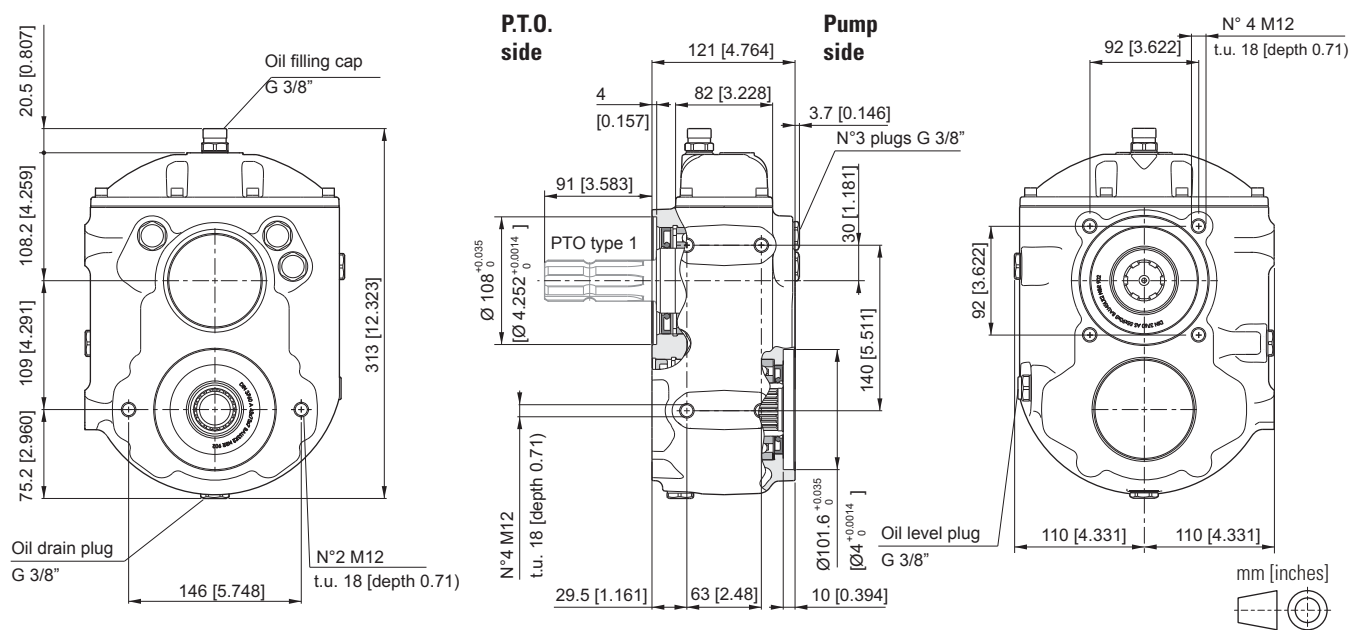
	Input rpm	Output (transmission ratio)										
		1:1.0	1:1.5	1:2.0	1:2.5	1:3.0	1:3.5	1:3.8	1:4.0	1:4.3	1:4.5	1:5.0
540	curve	1	3	5	7	9	10	12	13	14	15	16
	rpm	540	810	1080	1350	1620	1836	2052	2160	2322	2430	2700
1000	curve	2	4	6	8	10	—	—	—	—	—	—
	rpm	1000	1500	2000	2500	3000	—	—	—	—	—	—

## SPARE PARTS

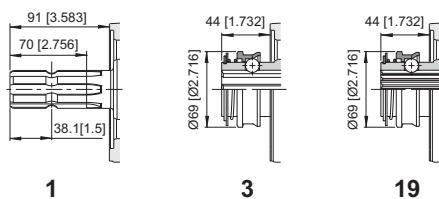


When ordering spare parts, specify reference number, gearbox model, PTO type and transmission ratio.

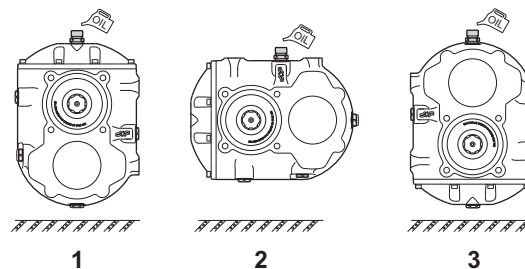
## SPEED INCREASER GEARBOX FOR PUMPS SAE B



**P.T.O.**



## Posizioni di montaggio

**ORDERING CODE**

**B-585/B** = Speed increaser for pumps SAE B

**P.T.O.**

**1** = Male 1" 3/8 DIN 9611  
**3** = Female 1" 3/8 DIN 9611 + tightening  
**19** = Female z21 - 16/32 DIN 9611 + tightening

### Transmission ratio

<b>1</b> = 1 : 1.0	<b>3,8</b> = 1 : 3.8
<b>1,5</b> = 1 : 1.5	<b>4</b> = 1 : 4.0
<b>2</b> = 1 : 2.0	<b>4,3</b> = 1 : 4.3
<b>2,5</b> = 1 : 2.5	<b>4,5</b> = 1 : 4.5
<b>3</b> = 1 : 3.0	<b>5</b> = 1 : 5.0
<b>3,5</b> = 1 : 3.5	

## Variants

**00** = No variant

### Coupling

**00** = No Coupling  
**02** = Z=18 BF3/2  
**2T** = Z=18 BF3/2T  
**03** = Z=18 BF3

### Pinion internal teeth

**A0** = Z13 16/32"  
**B0** = Z15 16/32"  
**C0** = Z18 DIN 5482 (only until 1/3.8 ratio)

### Mounting positions

1 / 2 / 3

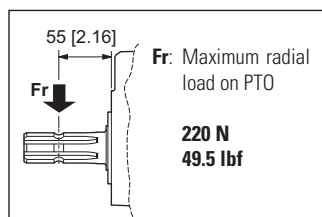
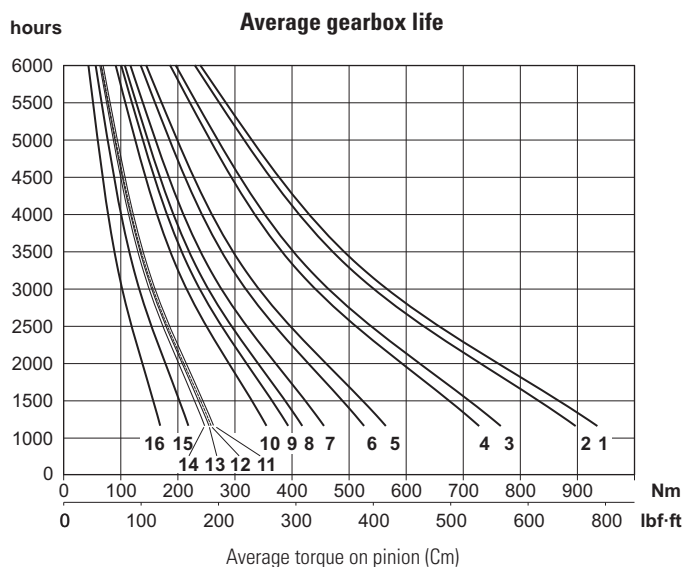


## TECHNICAL DATA

Transmission ratio	Maximum torque Nm [lbf·ft]				Weight kg [lb]
	540 rpm		1000 rpm		
	C1*	C2*	C1*	C2*	
1 : 1.0	910	492	756	408	19.5
	[671]	[363]	[558]	[301]	[43]
1 : 1.5	608	403	481	319	19.5
	[448]	[297]	[355]	[235]	[43]
1 : 2.0	483	297	347	213	19
	[356]	[219]	[256]	[157]	[41.9]
1 : 2.5	322	240	209	156	19
	[237]	[177]	[154]	[115]	[41.9]
1 : 3.0	268	207	160	123	19.5
	[197]	[153]	[118]	[91]	[43]
1 : 3.5	228	137	—	—	19.5
	[168]	[101]			[43]
1 : 3.8	213	136	—	—	19.5
	[157]	[100]			[43]
1 : 4.0	201	134	—	—	20
	[148]	[99]			[44]
1 : 4.3	192	130	—	—	20
	[142]	[96]			[44]
1 : 4.5	174	115	—	—	21
	[128]	[85]			[46.3]
1 : 5.0	157	89	—	—	22
	[116]	[66]			[48.5]

\* Maximum torque on pump:

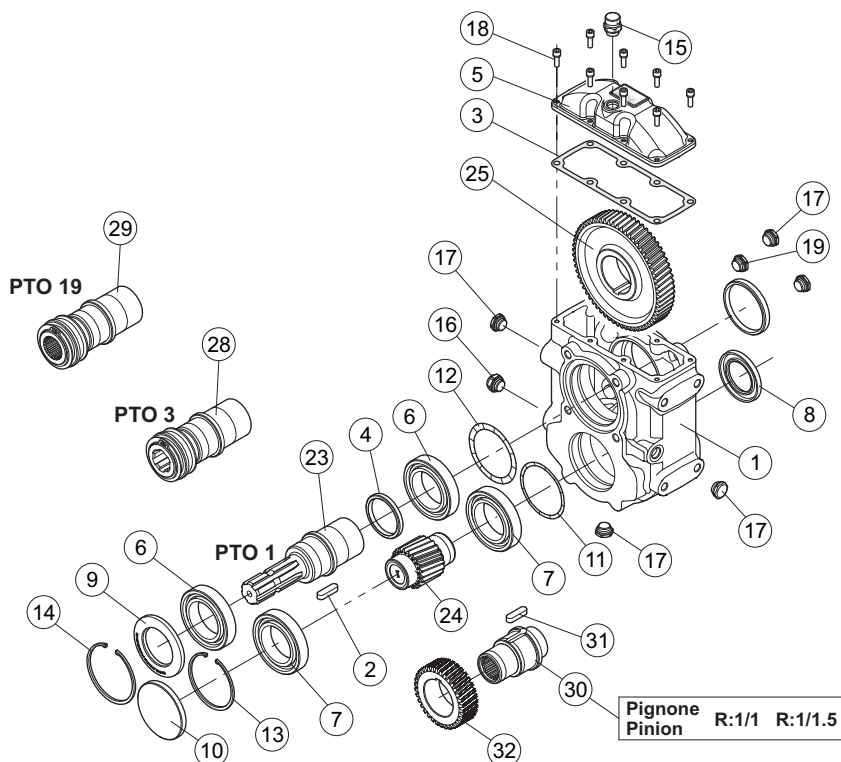
C1= maximum starting torque; C2= maximum torque for continuous duty.



Mounting positions	Oil liters [US gallon]
<b>1</b>	1.4 [0.37]
<b>2</b>	1.6 [0.42]
<b>3</b>	1.4 [0.37]

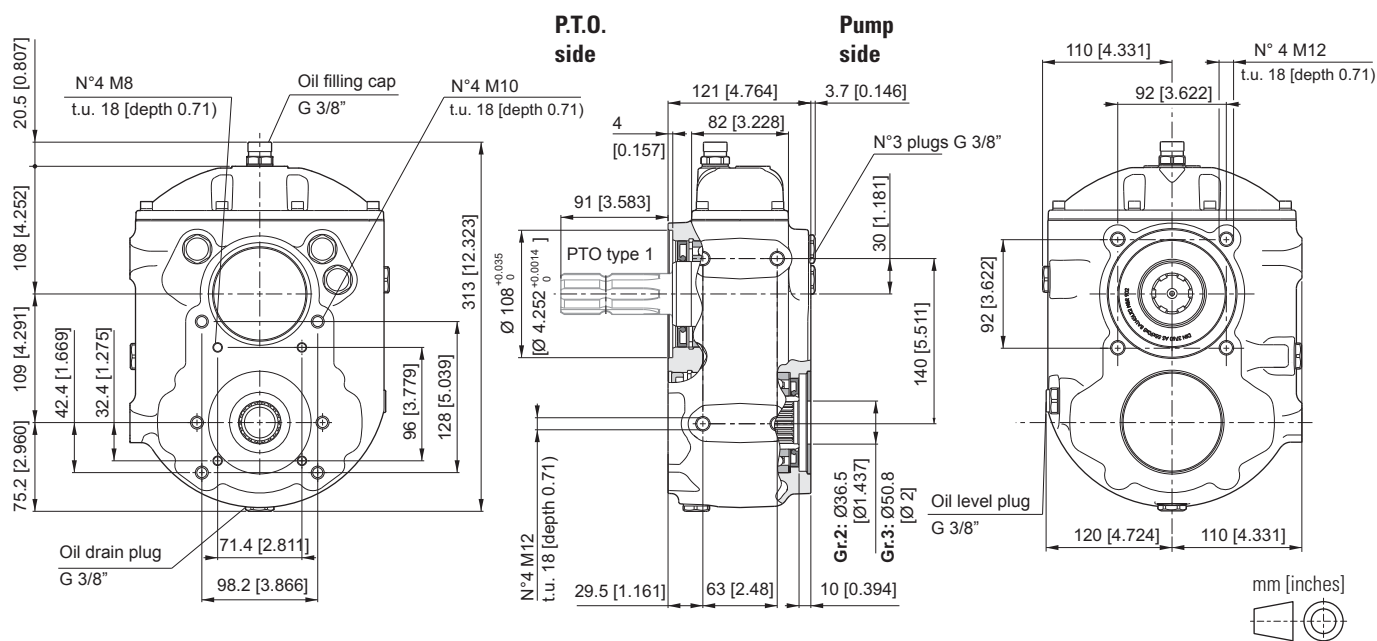
	Input rpm	Output (transmission ratio)										
		1:1.0	1:1.5	1:2.0	1:2.5	1:3.0	1:3.5	1:3.8	1:4.0	1:4.3	1:4.5	1:5.0
540	curve	1	3	5	7	9	10	12	13	14	15	16
	rpm	540	810	1080	1350	1620	1836	2052	2160	2322	2430	2700
1000	curve	2	4	6	8	10	—	—	—	—	—	—
	rpm	1000	1500	2000	2500	3000	—	—	—	—	—	—

## SPARE PARTS

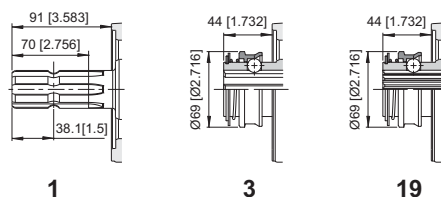


When ordering spare parts, specify reference number, gearbox model, PTO type and transmission ratio.

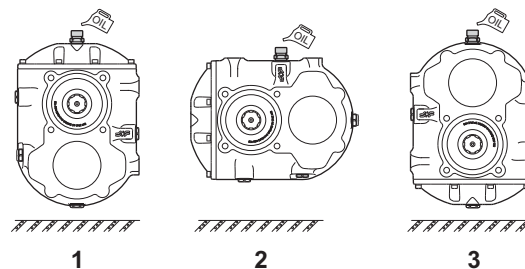
## SPEED INCREASER GEARBOX FOR PUMPS GR.2/3



### PT.O.



### Posizioni di montaggio



## ORDERING CODE

B-585/P - \*\* -1/ \*\*\* - \* - \*\* - \*\* - \*\*

**B-585/P** = Speed increaser for pumps Gr.2/3

### PT.O.

**1** = Male 1" 3/8 DIN 9611  
**3** = Female 1" 3/8 DIN 9611 + tightening  
**19** = Female z21 - 16/32 DIN 9611 + tightening

### Variants

**00** = No variant

### Coupling

**00** = No Coupling  
**02** = Z=18 BF3/2  
**2T** = Z=18 BF3/2T  
**03** = Z=18 BF3

### Pinion internal teeth

**A0** = Z13 16/32"  
**B0** = Z15 16/32"  
**C0** = Z18 DIN 5482 (only until 1/3.8 ratio)

### Mounting positions

**1 / 2 / 3**

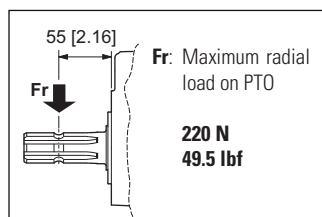
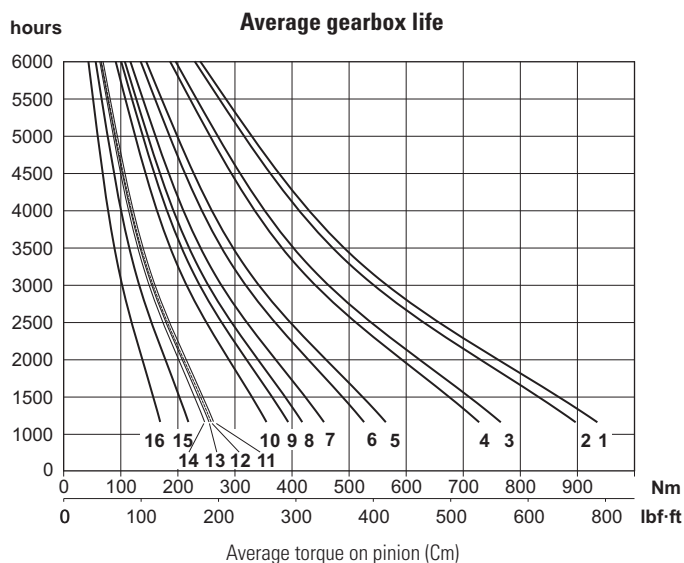
### Transmission ratio

<b>1</b> = 1 : 1.0	<b>3,8</b> = 1 : 3.8
<b>1,5</b> = 1 : 1.5	<b>4</b> = 1 : 4.0
<b>2</b> = 1 : 2.0	<b>4,3</b> = 1 : 4.3
<b>2,5</b> = 1 : 2.5	<b>4,5</b> = 1 : 4.5
<b>3</b> = 1 : 3.0	<b>5</b> = 1 : 5.0
<b>3,5</b> = 1 : 3.5	

## TECHNICAL DATA

Transmission ratio	Maximum torque Nm [lbf·ft]				Weight kg [lb]
	540 rpm		1000 rpm		
	C1*	C2*	C1*	C2*	
1 : 1.0	910	492	756	408	19.5
	[671]	[363]	[558]	[301]	[43]
1 : 1.5	608	403	481	319	19.5
	[448]	[297]	[355]	[235]	[43]
1 : 2.0	483	297	347	213	19
	[356]	[219]	[256]	[157]	[41.9]
1 : 2.5	322	240	209	156	19
	[237]	[177]	[154]	[115]	[41.9]
1 : 3.0	268	207	160	123	19.5
	[197]	[153]	[118]	[91]	[43]
1 : 3.5	228	137	—	—	19.5
	[168]	[101]			[43]
1 : 3.8	213	136	—	—	19.5
	[157]	[100]			[43]
1 : 4.0	201	134	—	—	20
	[148]	[99]			[44]
1 : 4.3	192	130	—	—	20
	[142]	[96]			[44]
1 : 4.5	174	115	—	—	21
	[128]	[85]			[46.3]
1 : 5.0	157	89	—	—	22
	[116]	[66]			[48.5]

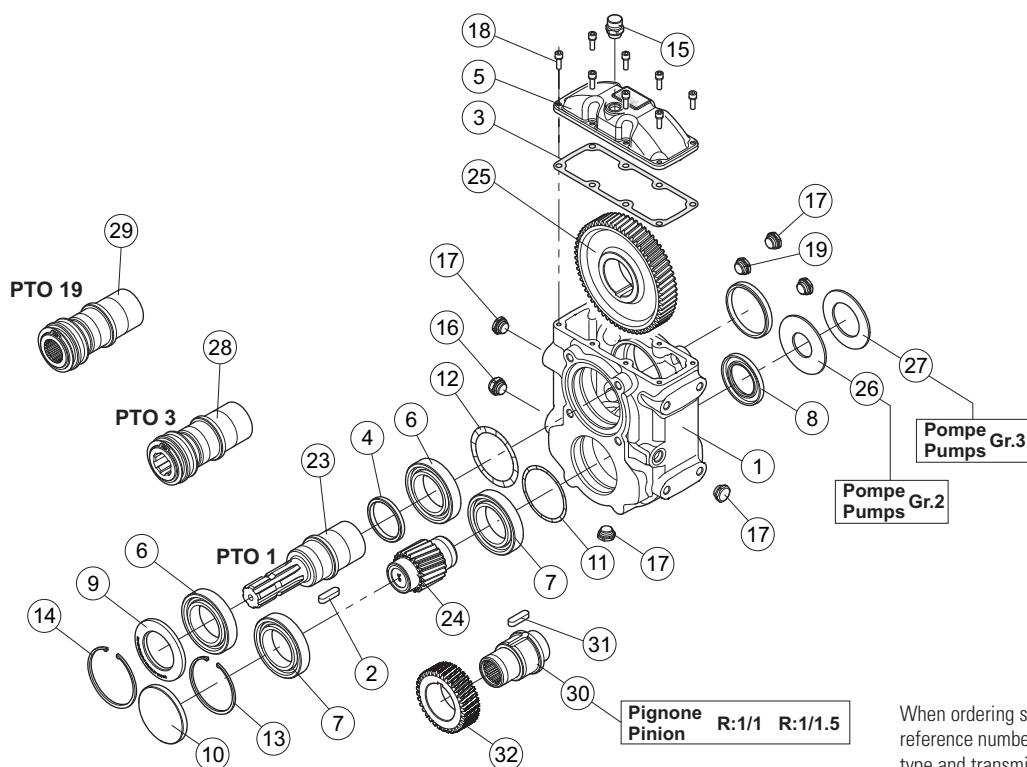
\* Maximum torque on pump:  
C1= maximum starting torque; C2= maximum torque for continuous duty.



Mounting positions	Oil liters [US gallon]
<b>1</b>	1.4 [0.37]
<b>2</b>	1.6 [0.42]
<b>3</b>	1.4 [0.37]

	Input rpm	Output (transmission ratio)										
		1:1.0	1:1.5	1:2.0	1:2.5	1:3.0	1:3.5	1:3.8	1:4.0	1:4.3	1:4.5	1:5.0
540	curve	1	3	5	7	9	10	12	13	14	15	16
	rpm	540	810	1080	1350	1620	1836	2052	2160	2322	2430	2700
1000	curve	2	4	6	8	10	—	—	—	—	—	—
	rpm	1000	1500	2000	2500	3000	—	—	—	—	—	—

## SPARE PARTS



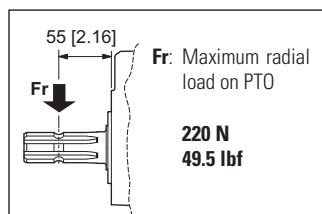
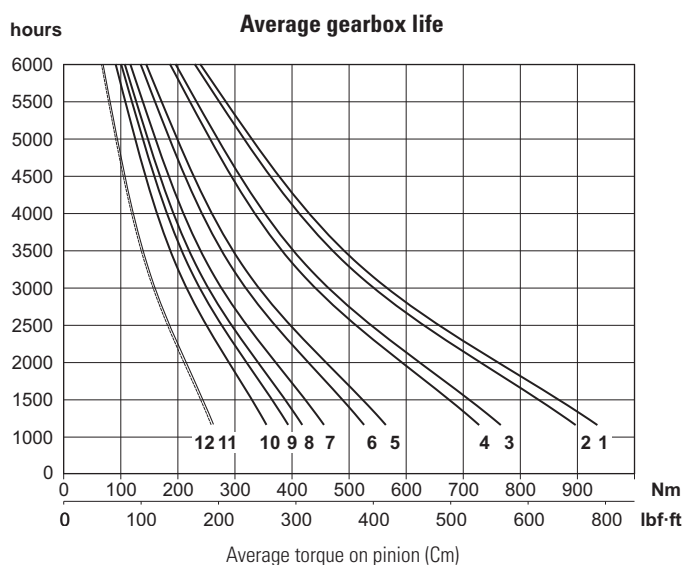
When ordering spare parts, specify reference number, gearbox model, PTO type and transmission ratio.

IE/B-585-U/01-2017

## TECHNICAL DATA

Transmission ratio	Maximum torque Nm [lbf·ft]				Weight kg [lb]
	540 rpm		1000 rpm		
	C1*	C2*	C1*	C2*	
1 : 1.0	910 [671]	492 [363]	756 [558]	408 [301]	19.5 [43]
1 : 1.5	608 [448]	403 [297]	481 [355]	319 [235]	19.5 [43]
1 : 2.0	483 [356]	297 [219]	347 [256]	213 [157]	19 [41.9]
1 : 2.5	322 [237]	240 [177]	209 [154]	156 [115]	19 [41.9]
1 : 3.0	268 [197]	207 [153]	160 [118]	123 [91]	19.5 [43]
1 : 3.5	228 [168]	137 [101]	—	—	19.5 [43]
1 : 3.8	213 [157]	136 [100]	—	—	19.5 [43]

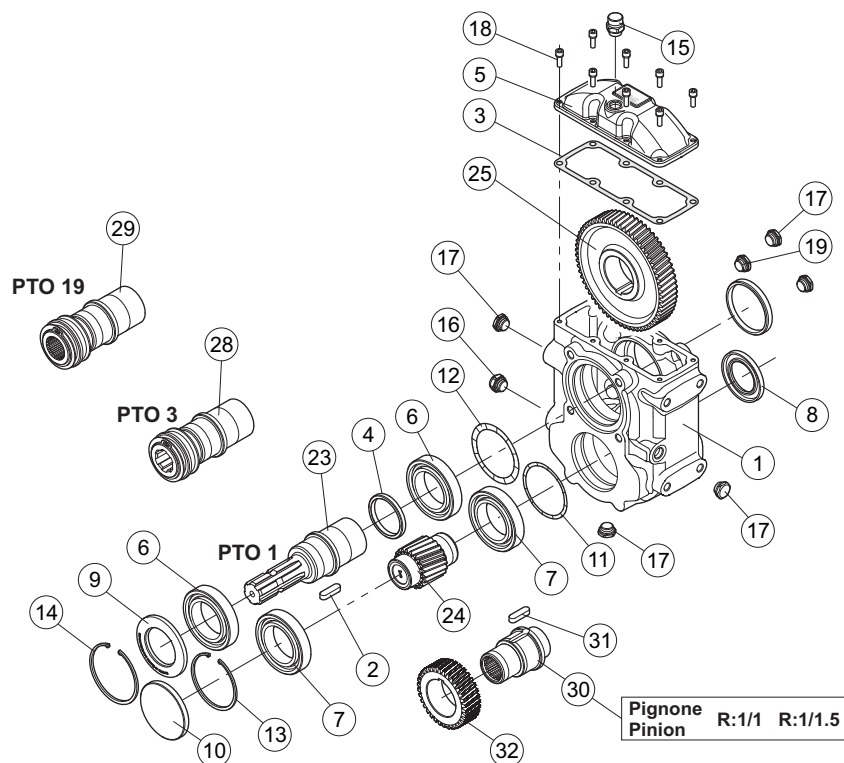
\* Maximum torque on pump:  
C1= maximum starting torque; C2= maximum torque for continuous duty.



Mounting positions	Oil liters [US gallon]
<b>1</b>	1.4 [0.37]
<b>2</b>	1.6 [0.42]
<b>3</b>	1.4 [0.37]

Input rpm	Output (transmission ratio)							
	1: 1.0	1:1.5	1:2.0	1:2.5	1:3.0	1:3.5	1:3.8	
540	curve	1	3	5	7	9	10	12
	rpm	540	810	1080	1350	1620	1836	2052
1000	curve	2	4	6	8	10	—	—
	rpm	1000	1500	2000	2500	3000	—	—

## SPARE PARTS



When ordering spare parts, specify reference number, gearbox model, PTO type and transmission ratio.

## IE/B580/02-2017

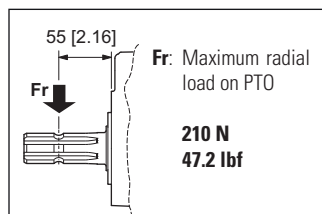
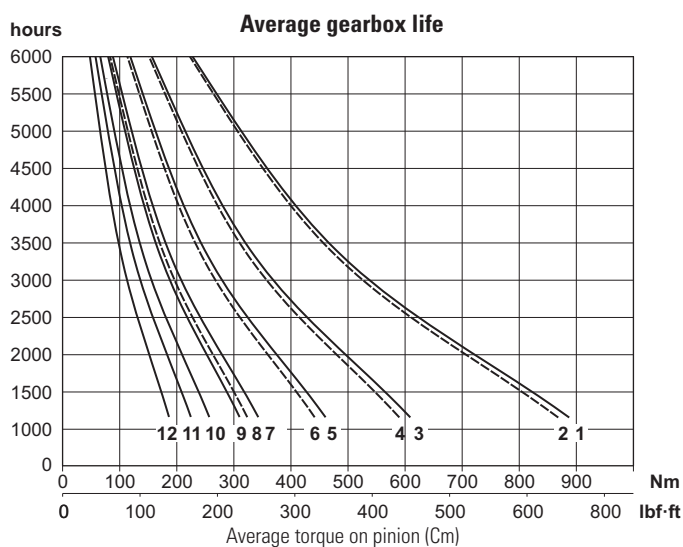


## TECHNICAL DATA

Transmission ratio	Maximum torque Nm [lbf·ft]				Weight kg [lb]
	540 rpm		1000 rpm		
	C1*	C2*	C1*	C2*	
1 : 1.0	885 [655]	466 [344]	866 [639]	456 [336]	12 [26.5]
1 : 1.5	608 [448]	320 [236]	589 [434]	310 [229]	12 [26.5]
1 : 2.0	460 [339]	242 [178]	441 [325]	232 [171]	11 [24.3]
1 : 2.6	342 [252]	180 [133]	323 [238]	170 [125]	10,8 [23.8]
1 : 3.0	310 [228]	163 [120]	—	—	10,5 [23.1]
1 : 3.4	257 [190]	135 [100]	—	—	11,5 [25.4]
1 : 4.0	224 [165]	118 [87]	—	—	11,5 [25.4]
1 : 4.8	186 [137]	98 [72]	—	—	13,6 [30]

\* Maximum torque on pump:

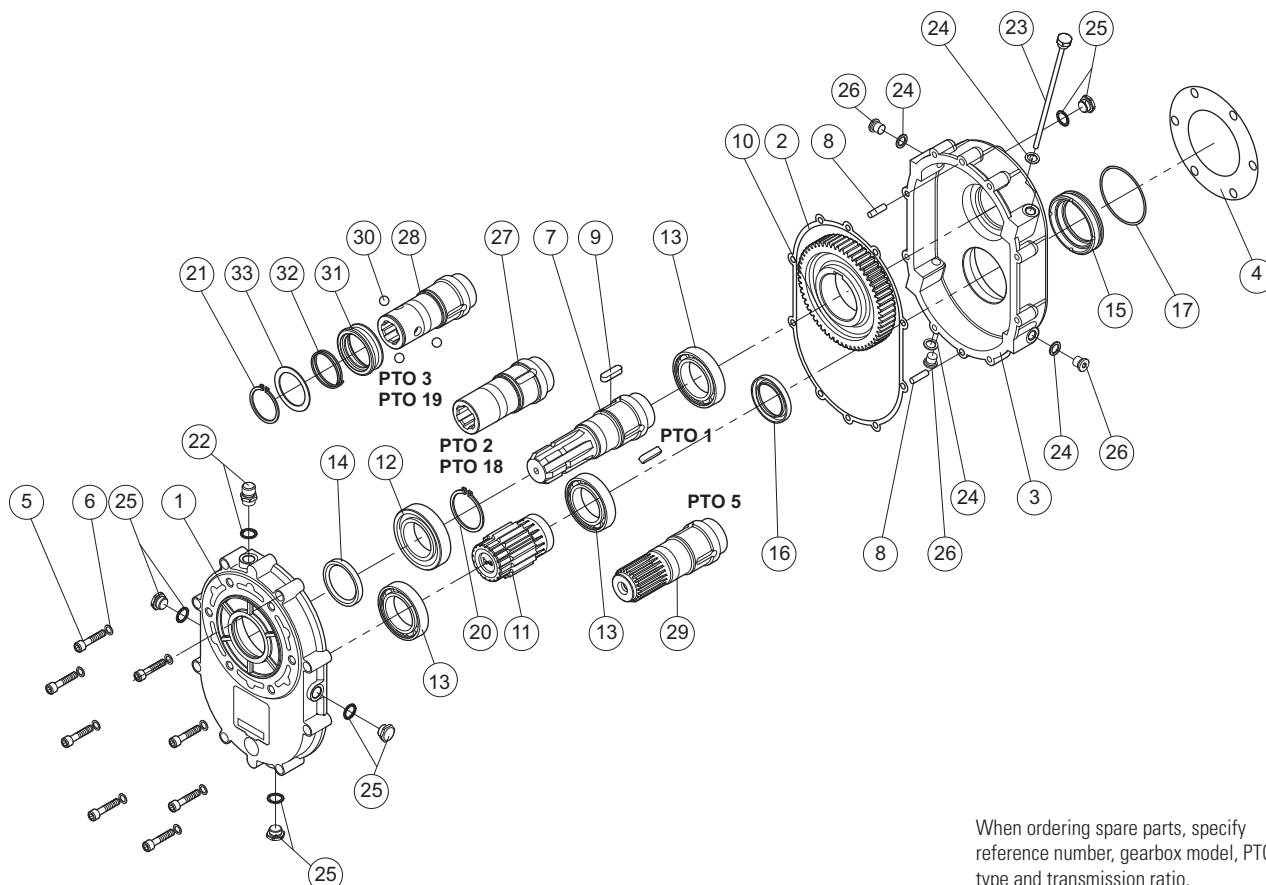
C1= maximum starting torque; C2= maximum torque for continuous duty.



Mounting positions	Oil liters [US gallon]
<b>1</b>	0.95 [0.25]
<b>2</b>	1.15 [0.30]
<b>3</b>	1.25 [0.33]

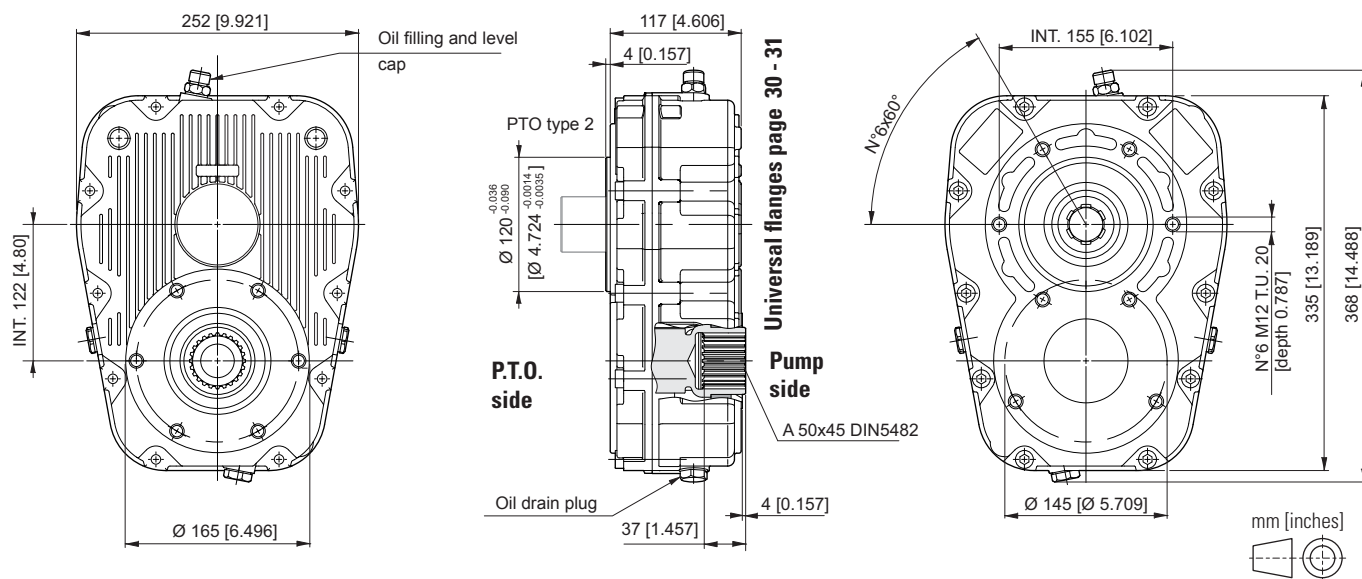
Input rpm	Output (transmission ratio)							
	1 : 1.0	1 : 1.5	1 : 2.0	1 : 2.6	1 : 3.0	1 : 3.4	1 : 4.0	1 : 4.8
<b>540</b>	curve	1	3	5	7	9	10	11
	rpm	540	810	1080	1408	1620	1836	2160
<b>1000</b>	curve	2	4	6	8			
	rpm	1000	1500	2000	2607			

## SPARE PARTS

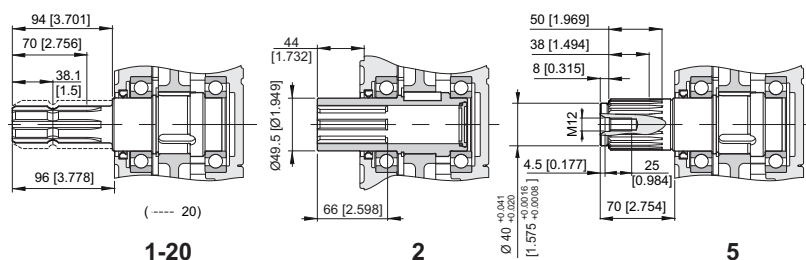


When ordering spare parts, specify reference number, gearbox model, PTO type and transmission ratio.

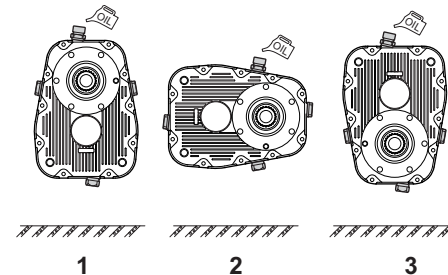
## SPEED INCREASER GEARBOX FOR PUMPS WITH EUROPEAN UNIFIED FLANGE / SAE / ISO



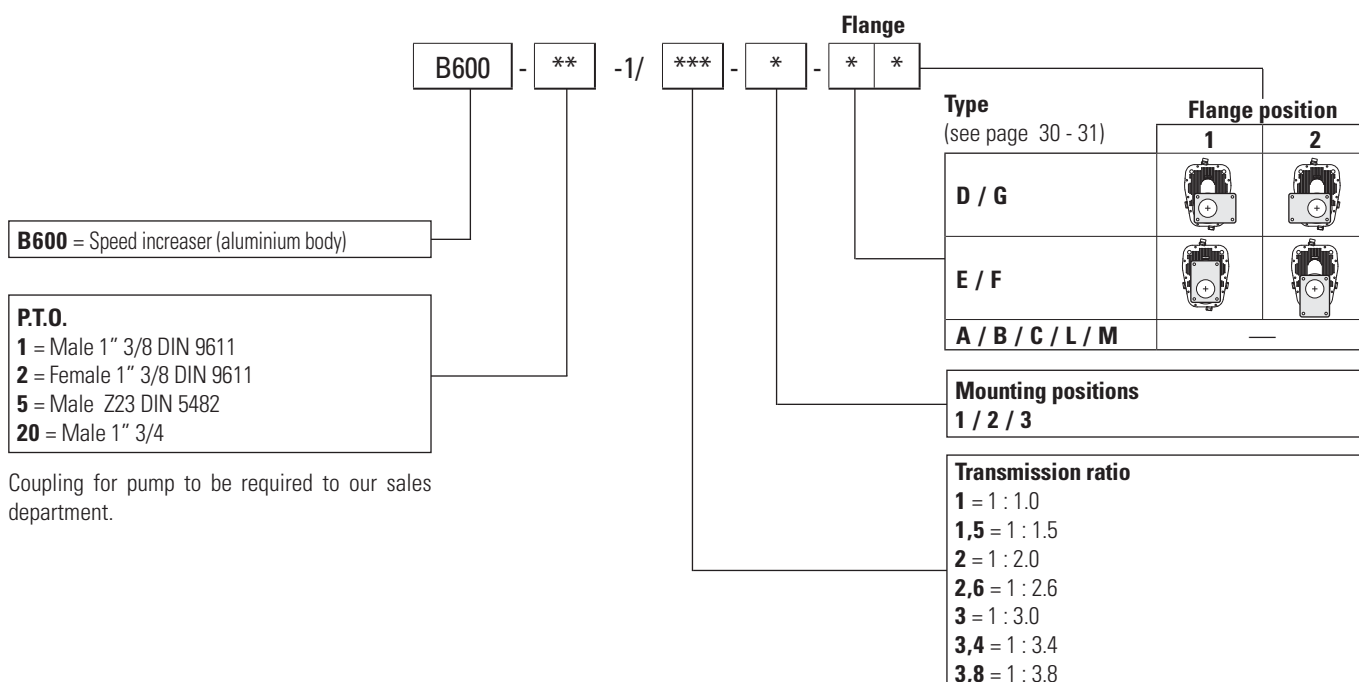
### P.T.O.



### Mounting positions



## ORDERING CODE

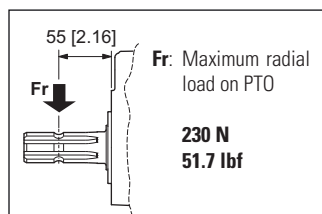
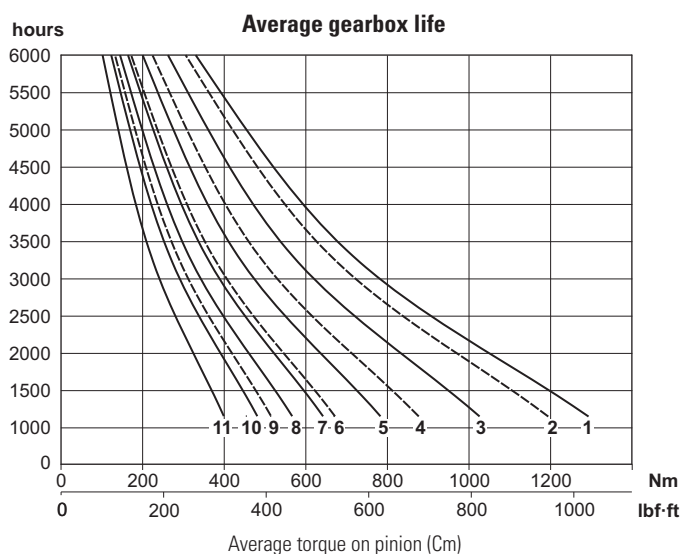




## TECHNICAL DATA

Transmission ratio	Maximum torque Nm [lbf·ft]				Weight kg [lb]
	540 rpm		1000 rpm		
	C1*	C2*	C1*	C2*	
1 : 1.0	1292 [953]	680 [502]	1193 [880]	628 [463]	17,5 [38,6]
1 : 1.5	1025 [756]	539 [398]	876 [646]	461 [340]	16,2 [35,7]
1 : 2.0	783 [578]	412 [304]	671 [495]	353 [260]	16,1 [35,5]
1 : 2.6	642 [474]	338 [249]	513 [378]	270 [199]	16,1 [35,5]
1 : 3.0	567 [418]	298 [220]	—	—	16,3 [35,9]
1 : 3.4	481 [354]	253 [187]	—	—	16,3 [35,9]
1 : 3.8	399 [294]	210 [155]	—	—	16,3 [35,9]

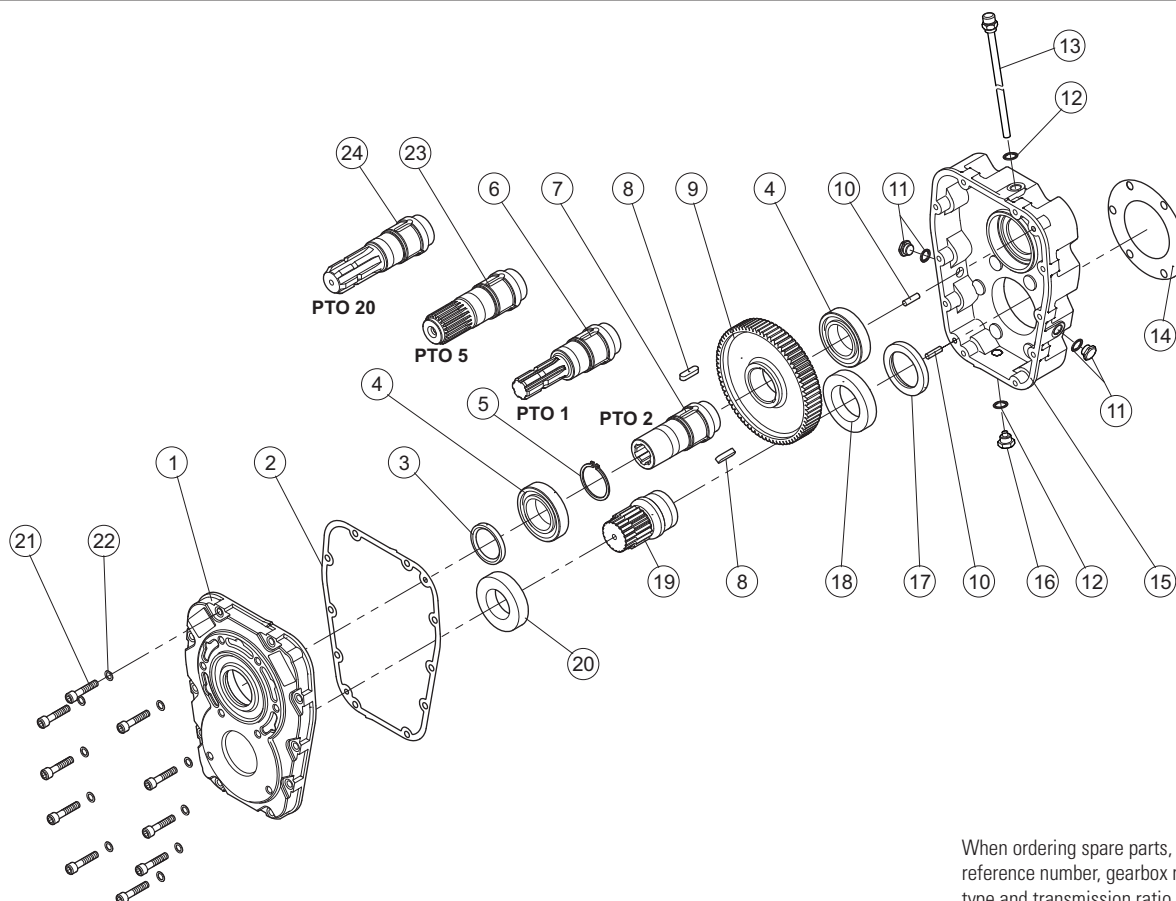
\* Maximum torque on pump:  
C1= maximum starting torque; C2= maximum torque for continuous duty.



Mounting positions	Oil liters [US gallon]
<b>1</b>	1.4 [0.37]
<b>2</b>	1.65 [0.44]
<b>3</b>	1.00 [0.26]

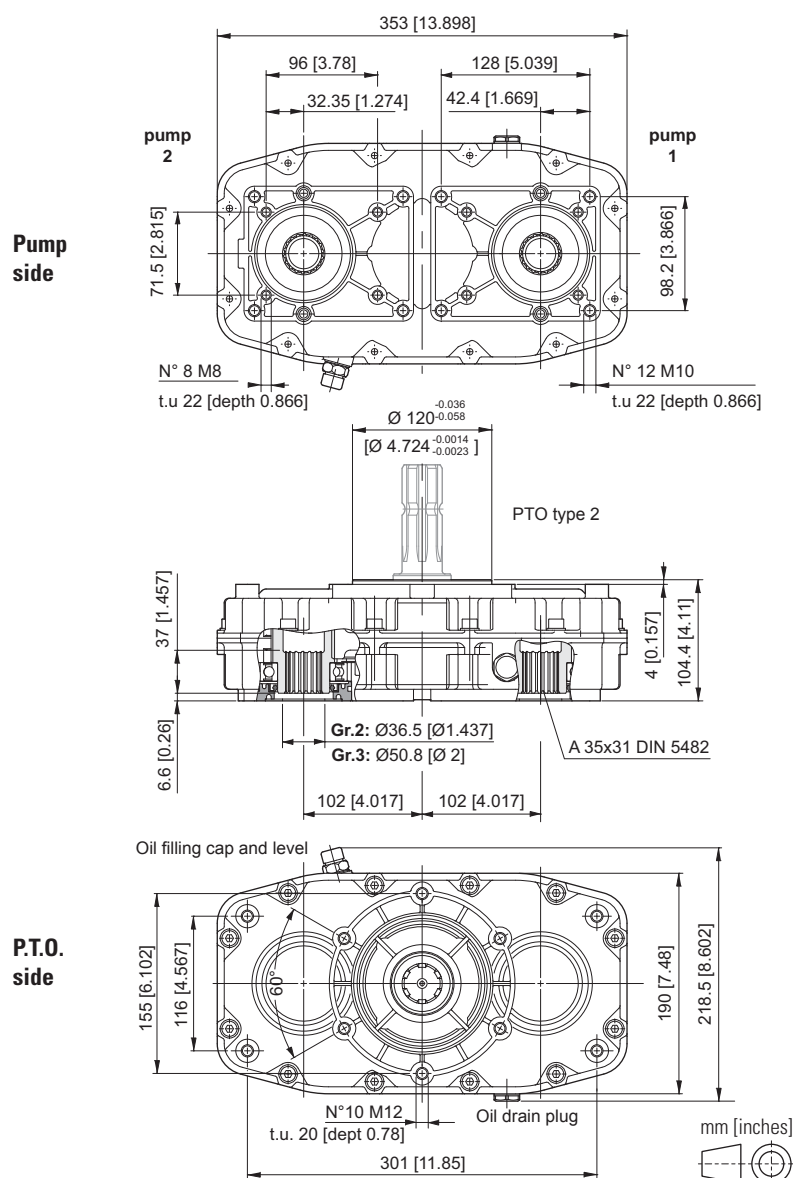
Input rpm		Output (transmission ratio)						
		1 : 1.0	1 : 1.5	1 : 2.0	1 : 2.6	1 : 3.0	1 : 3.4	1 : 3.8
<b>540</b>	curve	1	3	5	7	8	10	11
	rpm	540	810	1080	1408	1620	1836	2030
<b>1000</b>	curve	2	4	6	9	—	—	—
	rpm	1000	1500	2000	2607	—	—	—

## SPARE PARTS

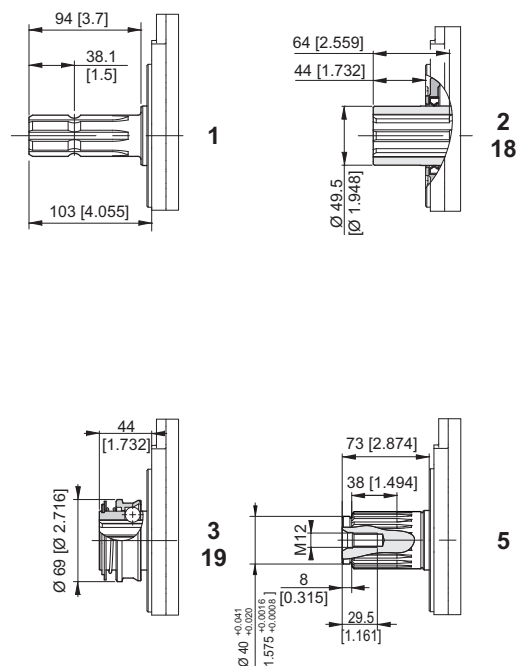


When ordering spare parts, specify reference number, gearbox model, PTO type and transmission ratio.

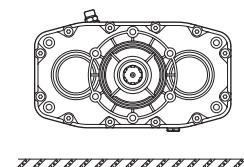
## SPLITTER FOR PUMPS WITH EUROPEAN UNIFIED FLANGE GR 2/3 - SAE A/B



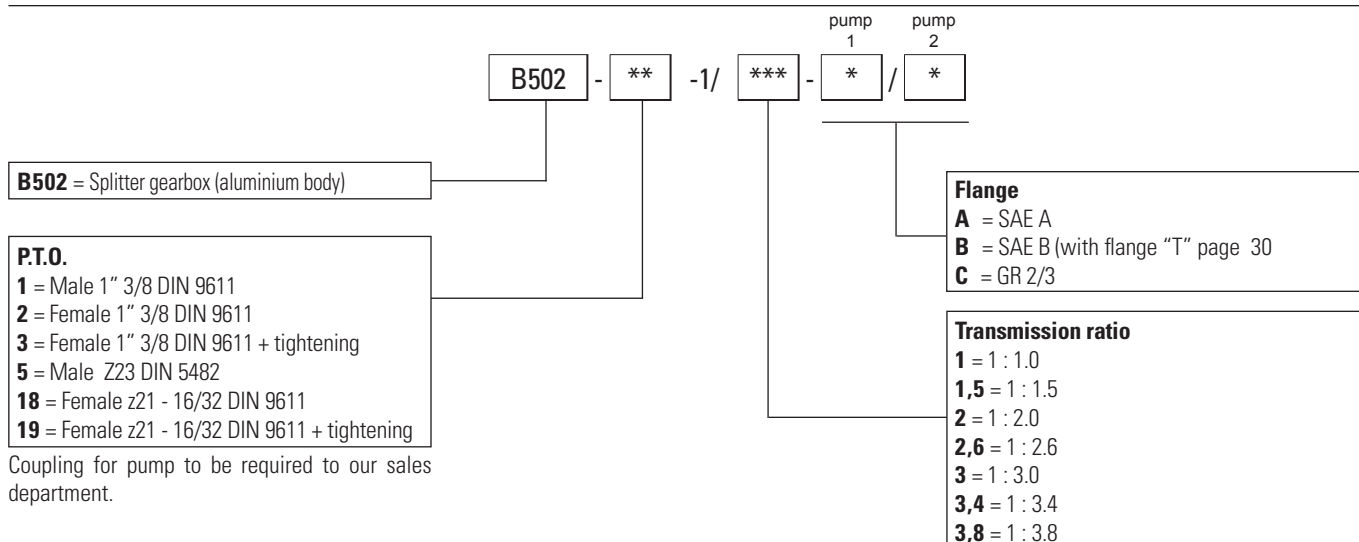
### P.T.O.



### Mounting positions



## ORDERING CODE

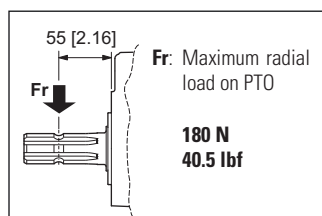


## TECHNICAL DATA

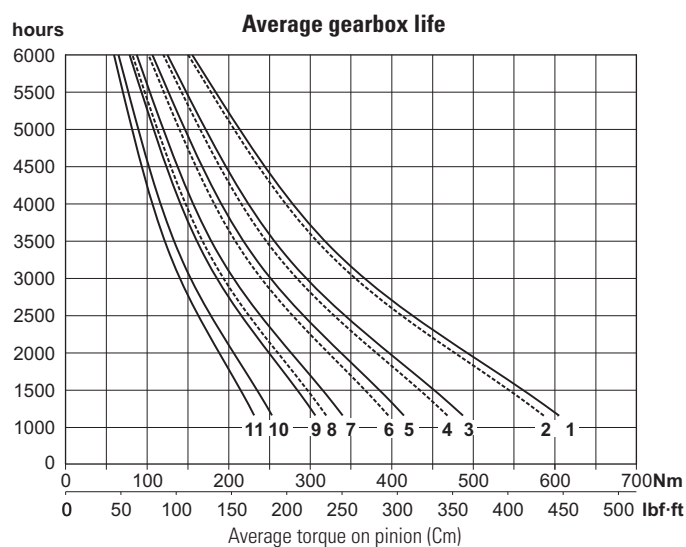
Transmission ratio	Maximum torque Nm [lbf·ft]				Weight kg [lb]
	540 rpm		1000 rpm		
	C1*	C2*	C1*	C2*	
1 : 1.0	604 [445]	318 [235]	585 [431]	308 [227]	12,9 [28.4]
1 : 1.5	486 [358]	256 [189]	467 [344]	246 [181]	12,2 [26.9]
1 : 2.0	414 [305]	218 [161]	395 [291]	208 [153]	11,2 [24.7]
1 : 2.6	339 [250]	178 [131]	319 [235]	168 [124]	11,8 [26]
1 : 3.0	306 [226]	161 [119]	—	—	11,2 [24.7]
1 : 3.4	253 [187]	133 [98]	—	—	11,2 [24.7]
1 : 3.8	231 [170]	122 [89]	—	—	11,1 [24.5]

\* Maximum torque on pump:

C1= maximum starting torque; C2= maximum torque for continuous duty.

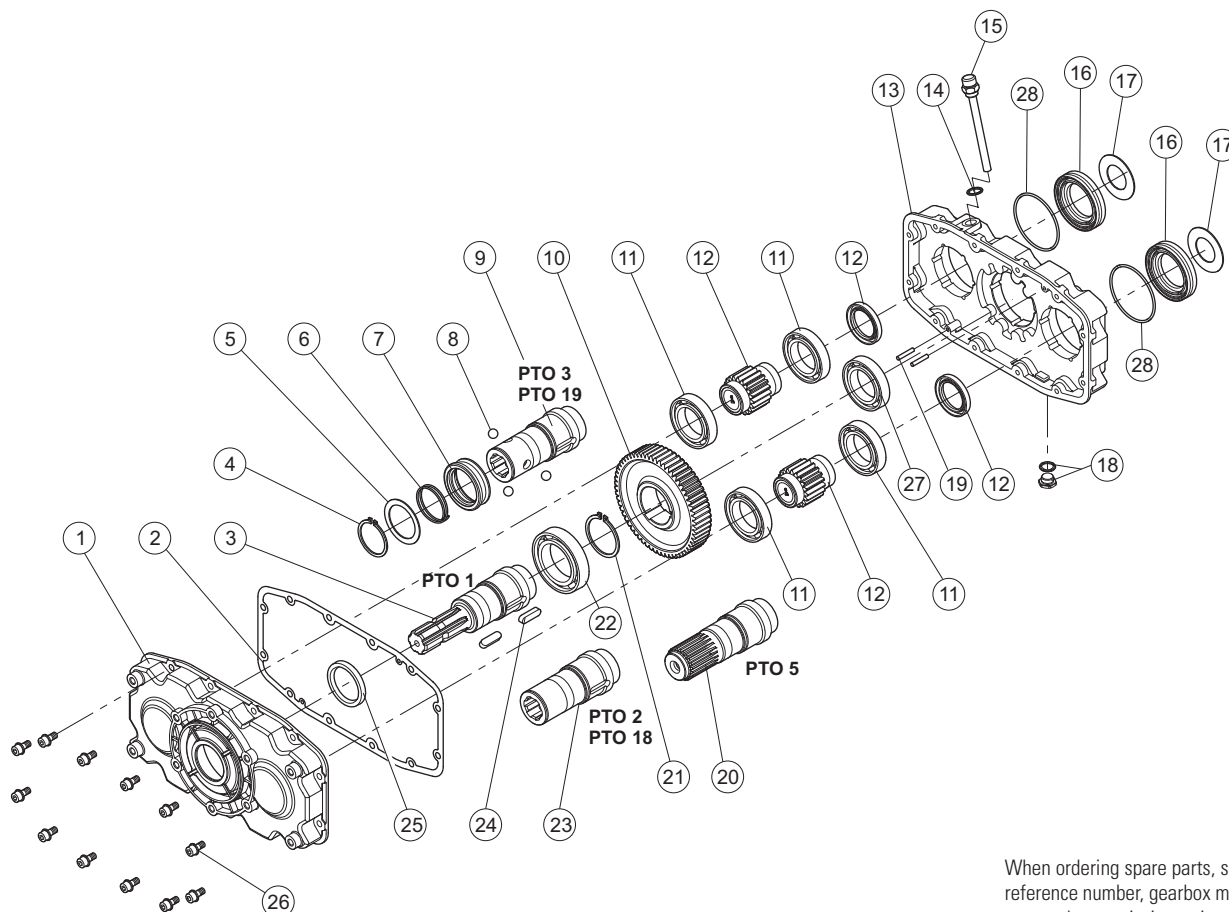


Oil
liters [US gallon]
1.20 [0.32]



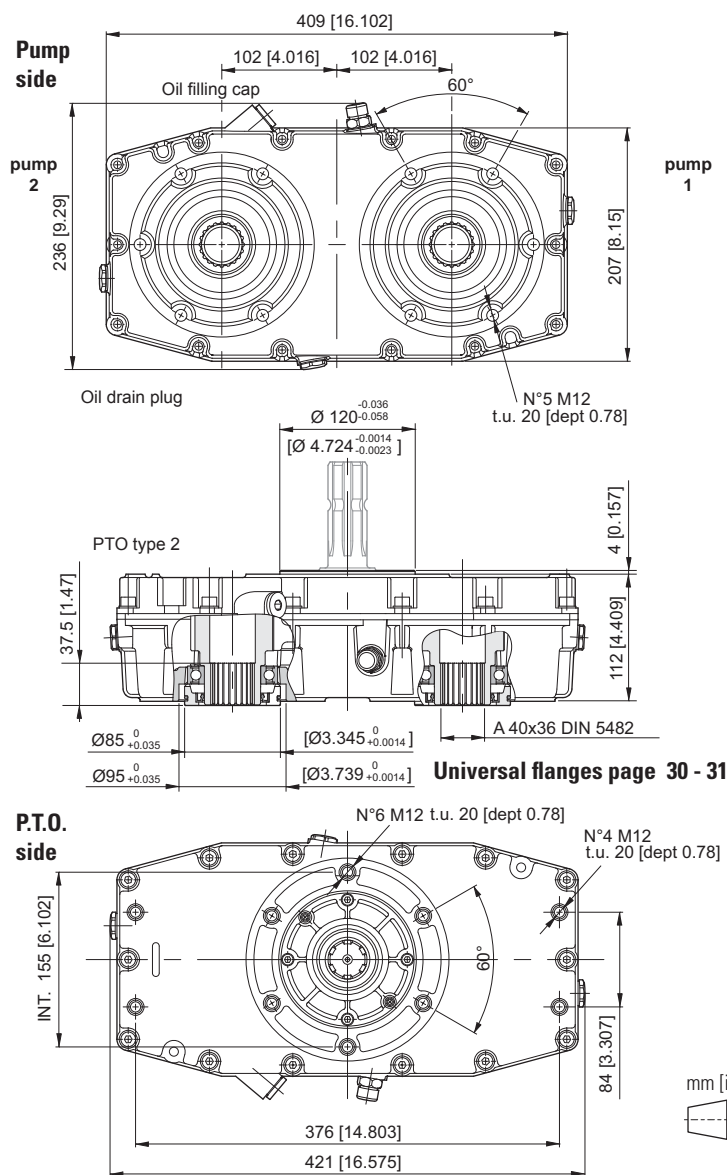
Input rpm		Output (transmission ratio)						
		1 : 1.0	1 : 1.5	1 : 2.0	1 : 2.6	1 : 3.0	1 : 3.4	1 : 3.8
<b>540</b>	curve	1	3	5	7	9	10	11
	rpm	540	810	1080	1408	1620	1836	2160
<b>1000</b>	curve	2	4	6	8	—	—	—
	rpm	1000	1500	2000	2607	—	—	—

## SPARE PARTS

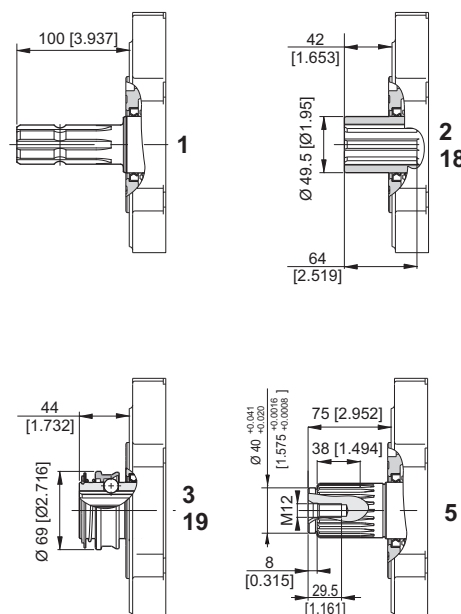


When ordering spare parts, specify reference number, gearbox model, PTO type and transmission ratio.

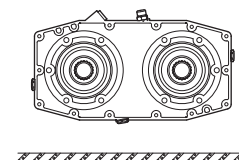
## SPLITTER GEARBOX FOR PUMPS WITH EUROPEAN UNIFIED FLANGE / SAE / ISO



P.T.O.



Mounting positions



## ORDERING CODE

**B582** - \*\* -1/ \*\*\* - \* \* / \* \*

**B502** = Splitter gearbox (aluminium body)

**P.T.O.**  
**1** = Male 1" 3/8 DIN 9611  
**2** = Female 1" 3/8 DIN 9611  
**3** = Female 1" 3/8 DIN 9611 + tightening  
**5** = Male Z23 DIN 5482  
**18** = Female z21 - 16/32 DIN 9611  
**19** = Female z21 - 16/32 DIN 9611 + tightening  
 Coupling for pump to be required to our sales department.

flange pump 1      flange pump 2

Type (see page 30 - 31)	Flange position	
	1	2
<b>D / G</b> <sup>(1)</sup>		
<b>E / F</b>		
<b>A / B / C / L / M</b>	—	

<sup>(1)</sup> **G1** only on pump 2 - **G2** only on pump 1

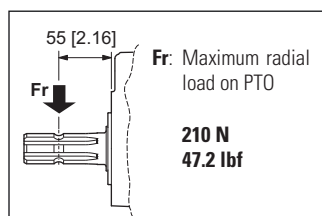
Transmission ratio	
<b>1</b> = 1 : 1.0	<b>3</b> = 1 : 3.0
<b>1,5</b> = 1 : 1.5	<b>3,4</b> = 1 : 3.4
<b>2</b> = 1 : 2.0	<b>4</b> = 1 : 4.0
<b>2,6</b> = 1 : 2.6	<b>4,8</b> = 1 : 4.8

## TECHNICAL DATA

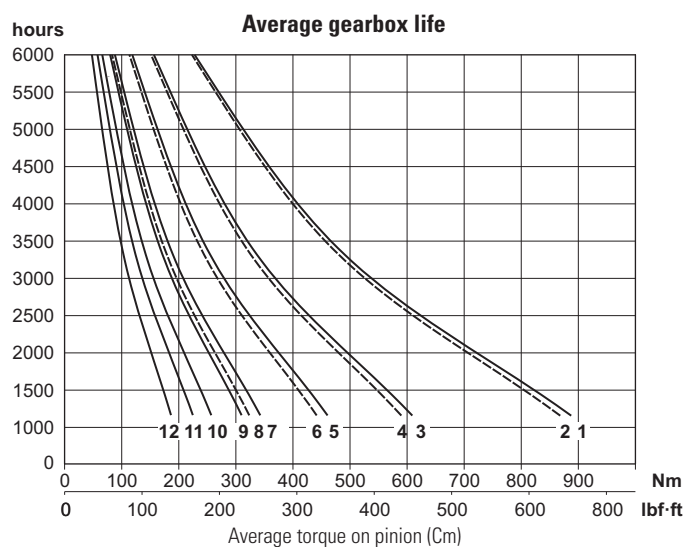
Transmission ratio	Maximum torque Nm [lbf-ft]				Weight kg [lb]
	540 rpm		1000 rpm		
	C1*	C2*	C1*	C2*	
<b>1 : 1.0</b>	885 [655]	466 [344]	866 [639]	456 [336]	16 [35.3]
<b>1 : 1.5</b>	608 [448]	320 [236]	589 [434]	310 [229]	15,5 [34.2]
<b>1 : 2.0</b>	460 [339]	242 [178]	441 [325]	232 [171]	14,6 [32.2]
<b>1 : 2.6</b>	342 [252]	180 [133]	323 [238]	170 [125]	14,6 [32.2]
<b>1 : 3.0</b>	310 [228]	163 [120]	—	—	13,7 [30.2]
<b>1 : 3.4</b>	257 [190]	135 [100]	—	—	15,1 [33.3]
<b>1 : 4.0</b>	224 [165]	118 [87]	—	—	14,8 [32.6]
<b>1 : 4.8</b>	186 [137]	98 [72]	—	—	17,45 [38.5]

\* Maximum torque on pump:

C1= maximum starting torque; C2= maximum torque for continuous duty.

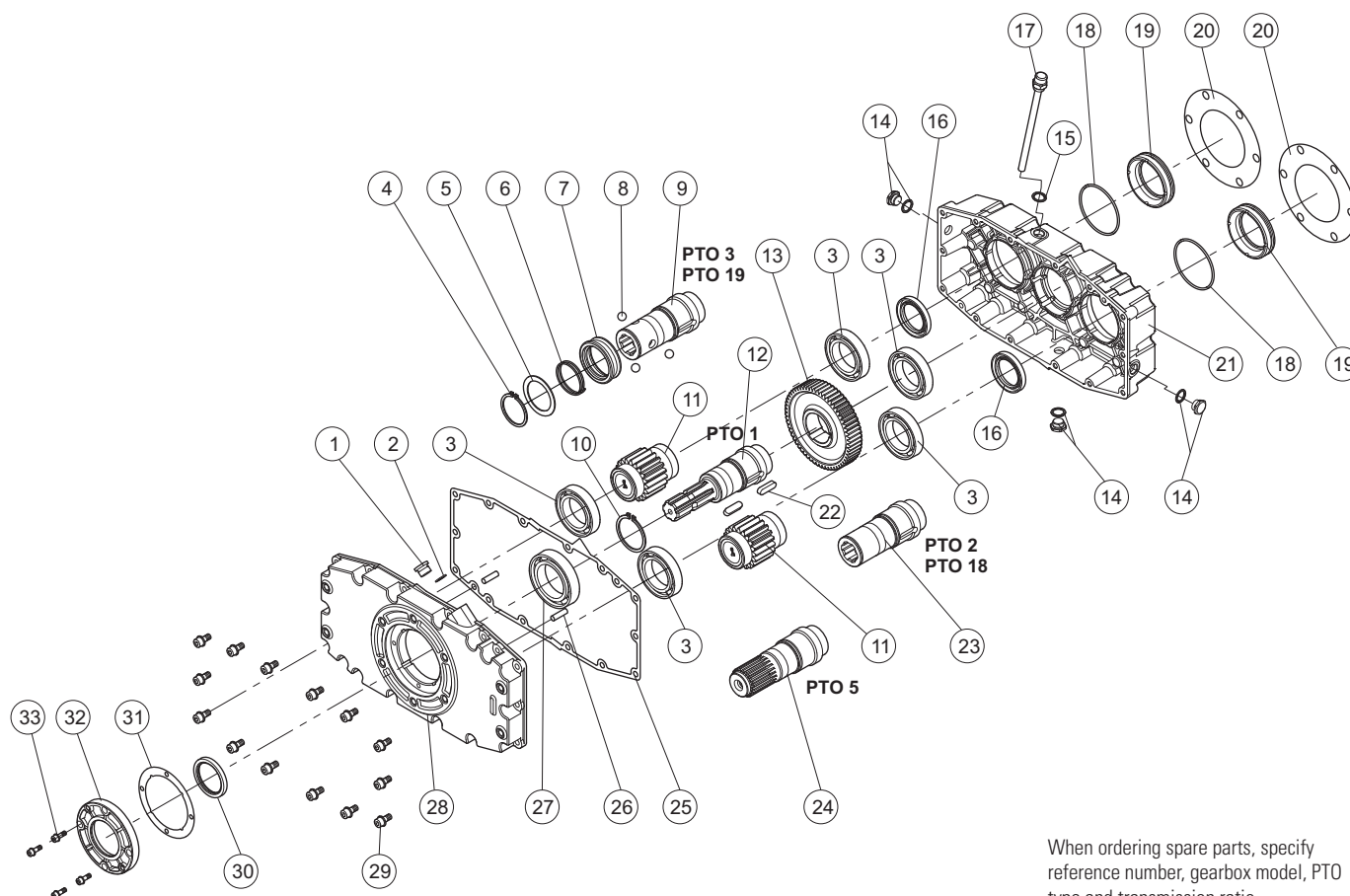


Oil
liters [US gallon]
1.70 [0.45]



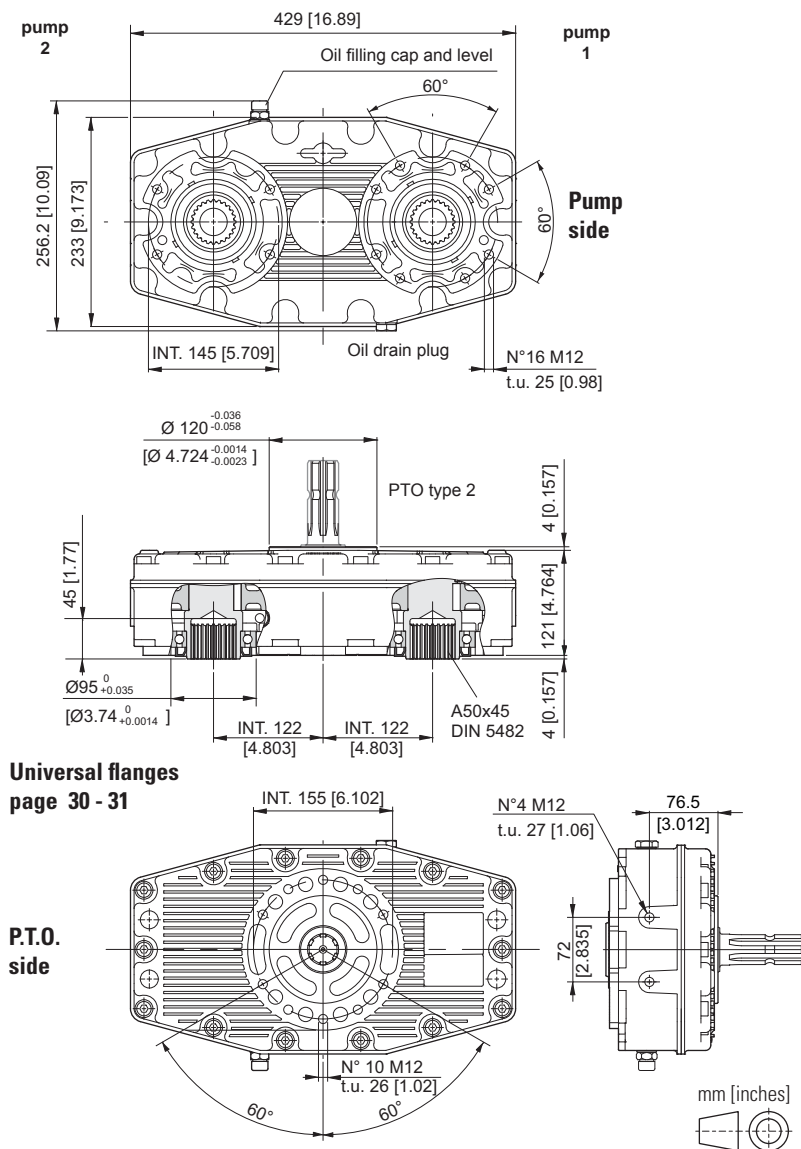
Input rpm	Output (transmission ratio)							
	1 : 1.0	1 : 1.5	1 : 2.0	1 : 2.6	1 : 3.0	1 : 3.4	1 : 4.0	1 : 4.8
<b>540</b>	curve	1	3	5	7	9	10	11
	rpm	540	810	1080	1408	1620	1836	2160
<b>1000</b>	curve	2	4	6	8	—	—	—
	rpm	1000	1500	2000	2607	—	—	—

## SPARE PARTS



When ordering spare parts, specify reference number, gearbox model, PTO type and transmission ratio.

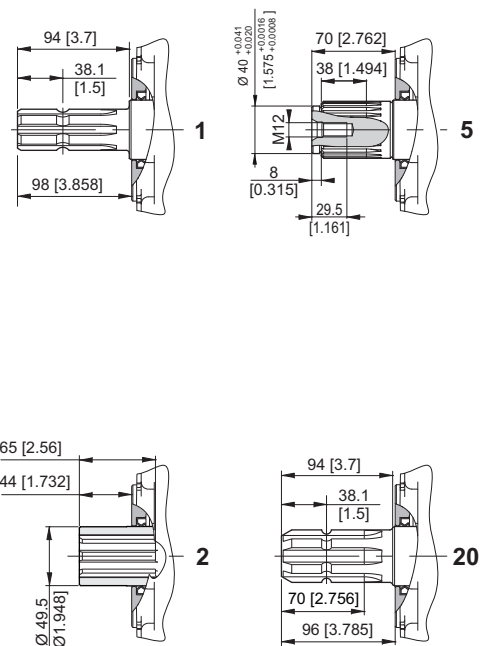
## SPLITTER GEARBOX FOR PUMPS WITH EUROPEAN UNIFIED FLANGE / SAE / ISO



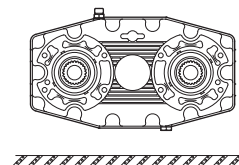
Universal flanges  
page 30 - 31

P.T.O.  
side

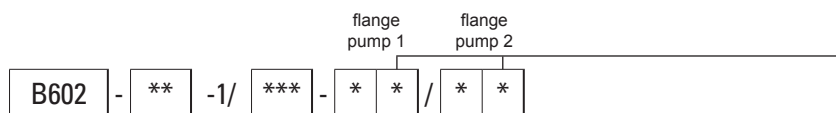
P.T.O.



Mounting positions



## ORDERING CODE



**B602** = Splitter gearbox (aluminium body)

**P.T.O.**

**1** = Male 1" 3/8 DIN 9611  
**2** = Female 1" 3/8 DIN 9611  
**5** = Male Z23 DIN 5482  
**20** = Male 1" 3/4

**Type**

(see page 30 - 31)

**Flange position**

	1	2	3	4
<b>D / G</b>				
<b>E / F</b>				
<b>A / B / C / L / M</b>	—			

**Transmission ratio**

<b>1</b> = 1 : 1.0	<b>3</b> = 1 : 3.0
<b>1,5</b> = 1 : 1.5	<b>3,4</b> = 1 : 3.4
<b>2</b> = 1 : 2.0	<b>3,8</b> = 1 : 3.8
<b>2,6</b> = 1 : 2.6	

Coupling for pump to be required to our sales department.

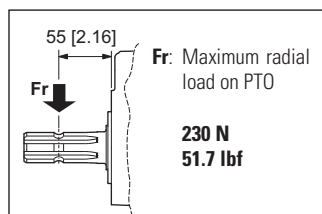


## TECHNICAL DATA

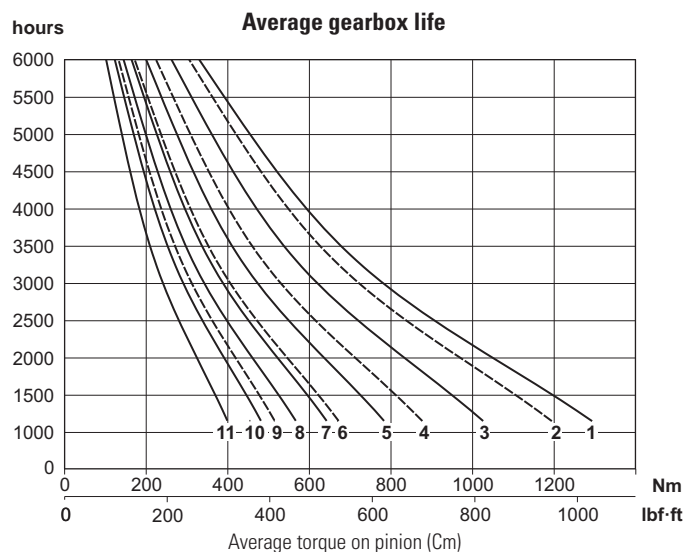
Transmission ratio	Maximum torque Nm [lbf-ft]				Weight kg [lb]
	540 rpm		1000 rpm		
	C1*	C2*	C1*	C2*	
1 : 1.0	1292 [953]	680 [502]	1193 [880]	628 [463]	17,5 [38,6]
1 : 1.5	1025 [756]	539 [398]	876 [646]	461 [340]	16,2 [35,7]
1 : 2.0	783 [578]	412 [304]	671 [495]	353 [260]	16,1 [35,5]
1 : 2.6	642 [474]	338 [249]	323 [238]	170 [125]	16,1 [35,5]
1 : 3.0	567 [418]	298 [220]	—	—	16,3 [35,9]
1 : 3.4	481 [354]	253 [187]	—	—	16,3 [35,9]
1 : 3.8	399 [294]	210 [155]	—	—	16,3 [35,9]

\* Maximum torque on pump:

C1= maximum starting torque; C2= maximum torque for continuous duty.

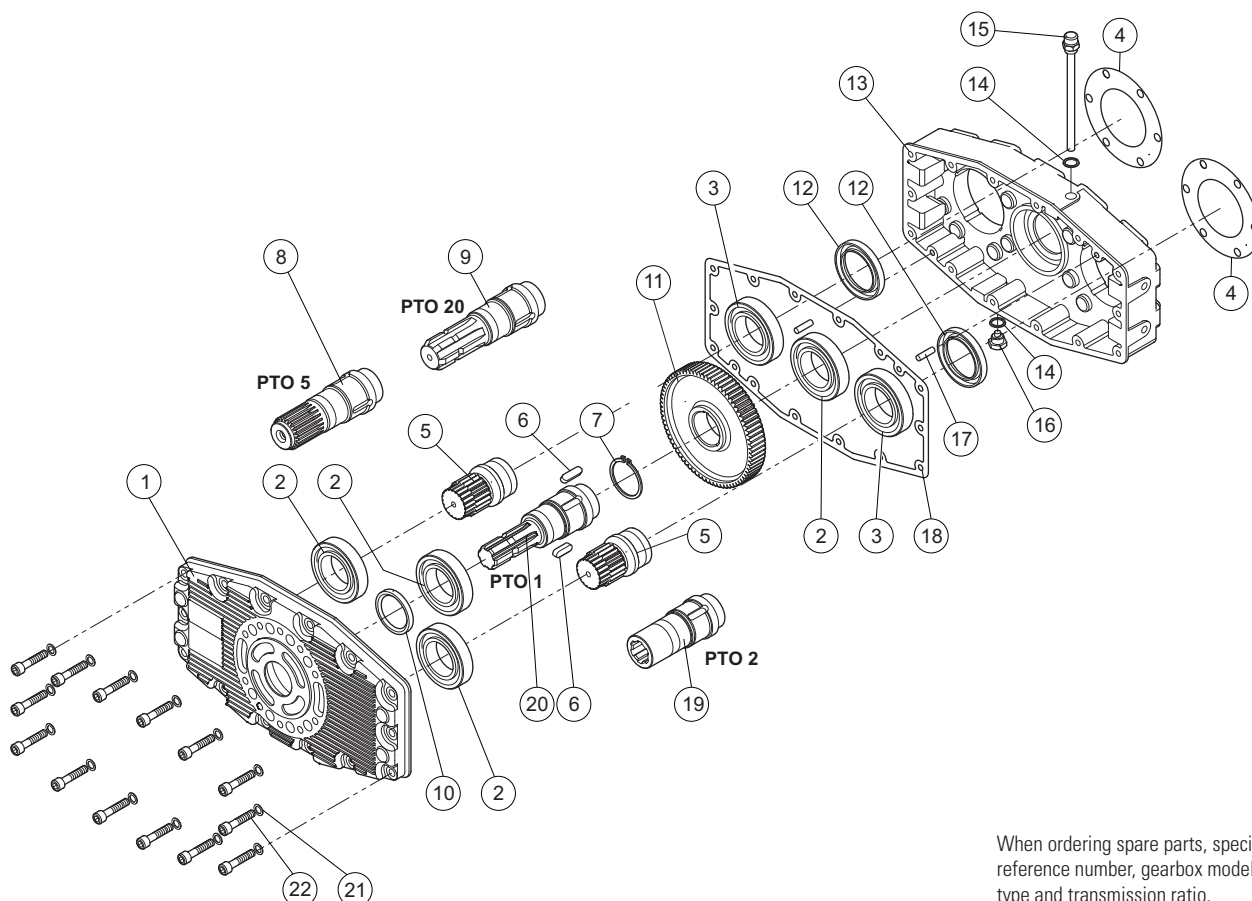


Oil liters [US gallon]
1.70 [0.45]



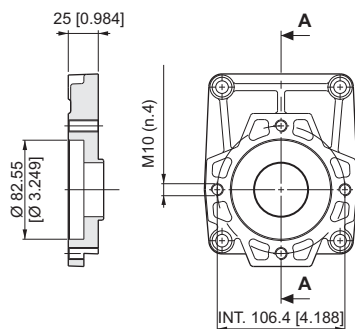
Input rpm		Output (transmission ratio)						
		1 : 1.0	1 : 1.5	1 : 2.0	1 : 2.6	1 : 3.0	1 : 3.4	1 : 3.8
<b>540</b>	curve	1	3	5	7	8	10	11
	rpm	540	810	1080	1408	1620	1836	2030
<b>1000</b>	curve	2	4	6	9	—	—	—
	rpm	1000	1500	2000	2607	—	—	—

## SPARE PARTS

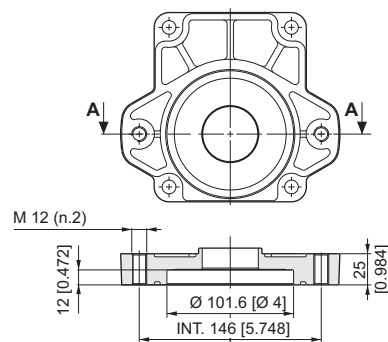


When ordering spare parts, specify reference number, gearbox model, PTO type and transmission ratio.

## FLANGES ML52-B502

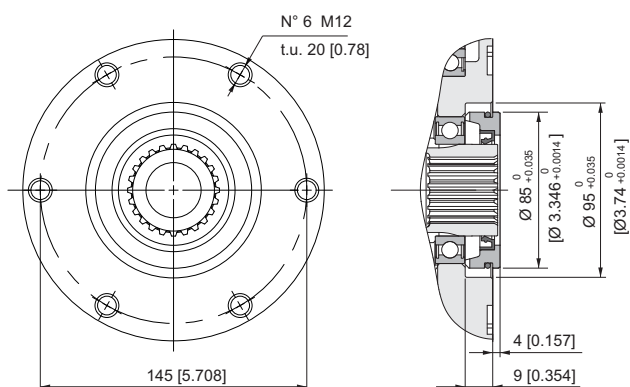


**Type "S"**  
**SAE A (2-4 holes) - ML52**  
**Kit flange and screws: 14040004**

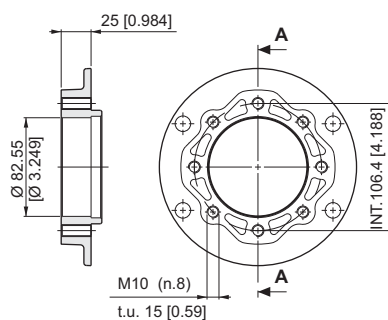


**Type "T"**  
**SAE B (2-4 holes) - ML52 - B502**  
**Kit flange and screws: 14040006**

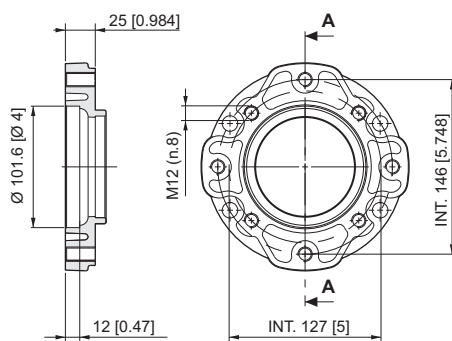
## UNIVERSAL FLANGES B580 - B600 - B582 - B602



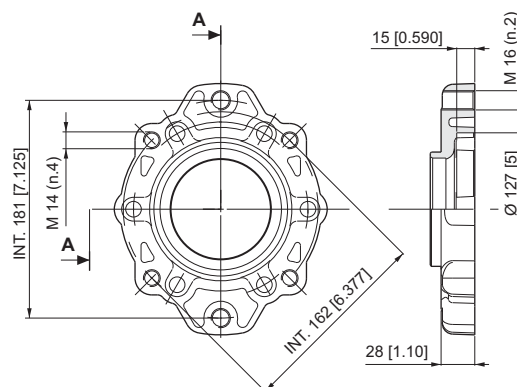
**Gearbox**  
**universal flanges**



**Type "A"**  
**SAE A (2-4 holes)**  
**Kit flange and screws: 14050012**

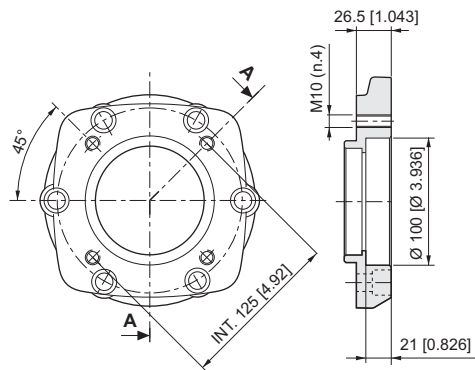


**Type "B"**  
**SAE B (2-4 holes)**  
**Kit flange and screws: 14050011**



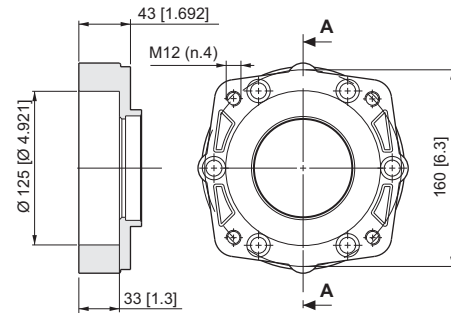
**Type "C"**  
**SAE C (2-4 holes)**  
**Kit flange and screws: 14050055**





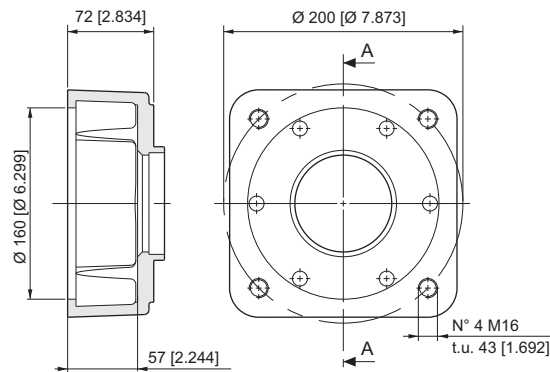
**Type "L"**  
**ISO 1**

**Kit flange and screws: 14050010**



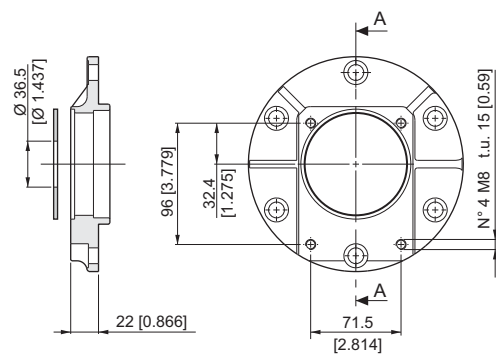
**Type "M"**  
**ISO 2**

**Kit flange and screws: 14050013**



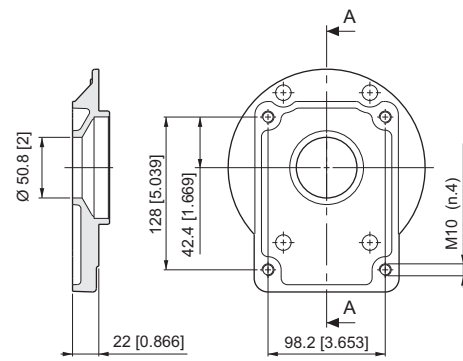
**Type "P"**  
**ISO 3**

**Kit flange and screws: 14050060**



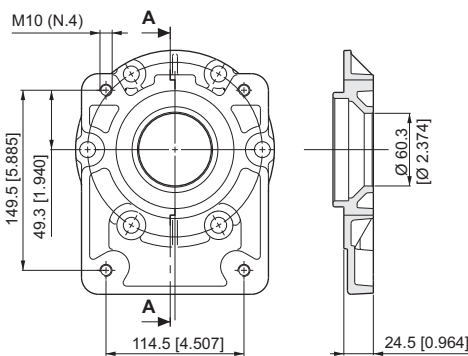
**Type "D"**  
**GR 2**

**Kit flange and screws: 14050008**



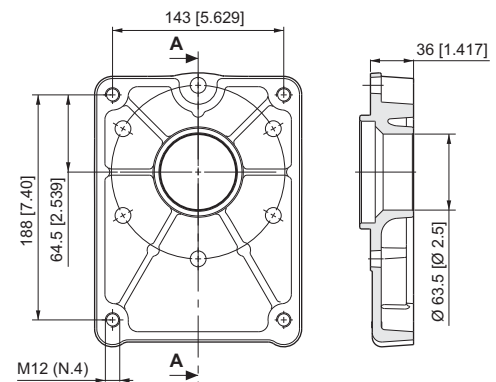
**Type "E"**  
**GR 3**

**Kit flange and screws: 14050005**



**Type "F"**  
**GR 3,5**

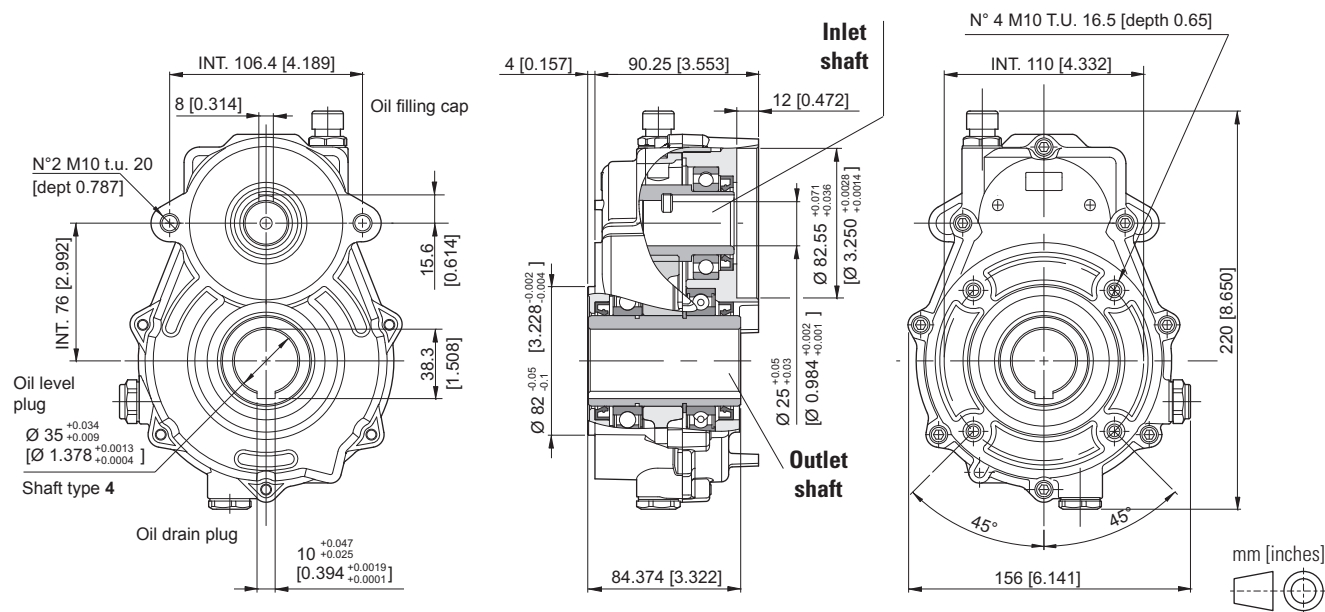
**Kit flange and screws: 14050006**



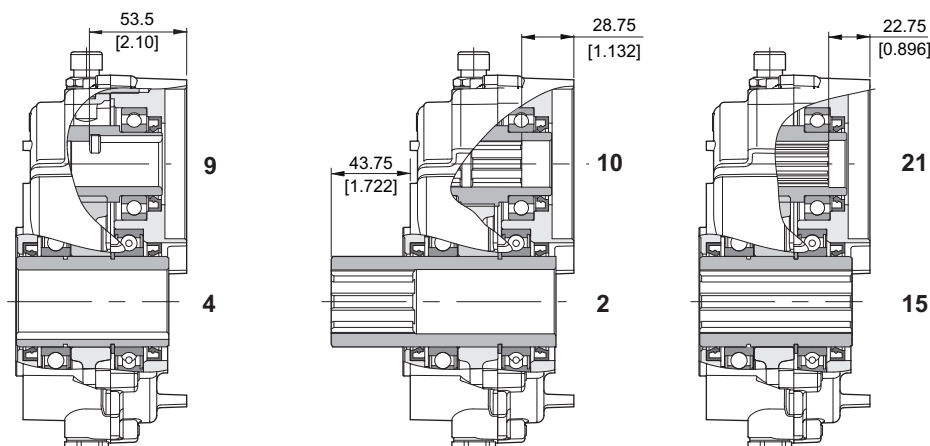
**Type "G"**  
**GR 4**

**Kit flange and screws: 14050062**

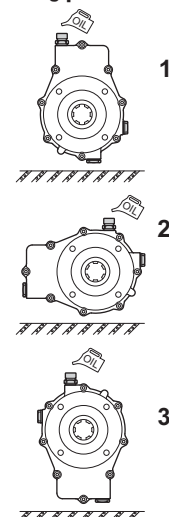
## SPEED REDUCER GEARBOX SAE A



### Shaft



### Mounting positions



## ORDERING CODE

RD33/SAE - \*\* -1/ \*\*\* - \*\* - \*

**RD33/SAE** = speed reducers (aluminium body)

### P.T.O.

**2** = Female 1" 3/8 DIN 9611 (long)  
**4** = Female Ø 35 mm  
**15** = Female 1" 3/8 DIN 9611 (short)

### Transmission ratio

**0,66** = 1.5 : 1  
**0,50** = 2.0 : 1  
**0,40** = 2.5 : 1  
**0,33** = 3.0 : 1  
**0,29** = 3.4 : 1  
**0,26** = 3.8 : 1

### Mounting positions 1 / 2 / 3

### Input shaft

**9** = Female Ø 25 \*  
**10** = Female SAE 6B  
**21** = Female Z14 DIN 5482 (25x22)

\* Only for transmission ratio: 0,66 - 0,50 - 0,40 - 0,33

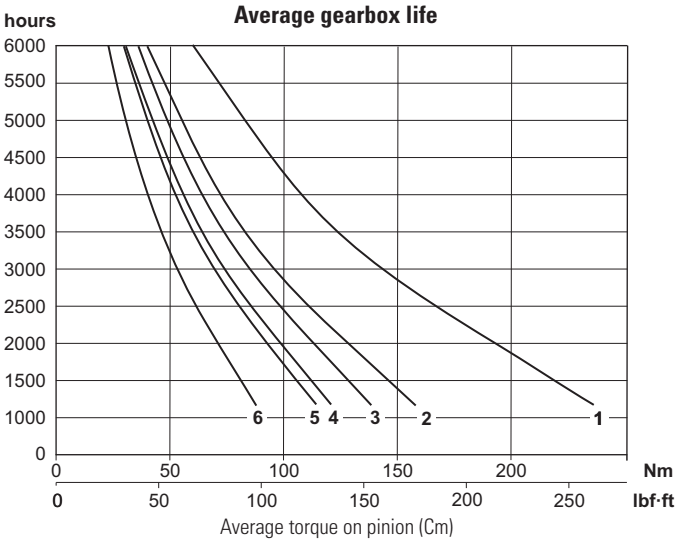
Coupling to the hydraulic motor to be required at our sales department.

## TECHNICAL DATA

Transmission ratio	Maximum torque Nm [lbf·ft] 200 rpm		Weight kg [lb]
	C1*	C2*	
0.66	236 [174]	124 [91]	4,3 [9.5]
0.50	158 [117]	83 [61]	4,4 [9.7]
0.40	139 [103]	73 [54]	4,3 [9.5]
0.33	121 [89]	64 [47]	4,4 [9.7]
0.29	114 [84]	60 [44]	4,7 [10.4]
0.26	88 [65]	46 [34]	4,4 [9.7]

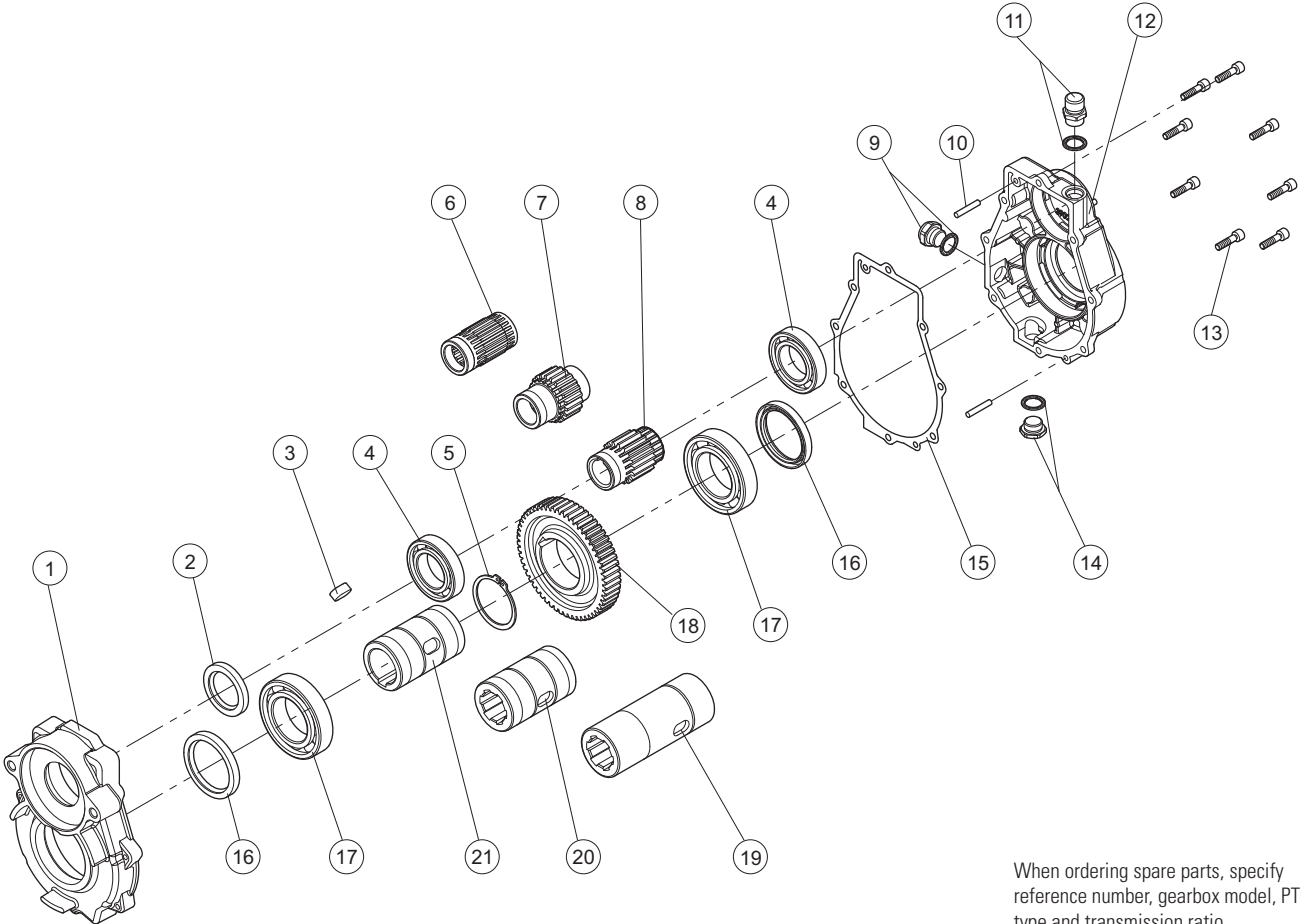
\* Maximum torque on pump:  
C1= maximum starting torque; C2= maximum torque for continuous duty.

Mounting positions	Oil liters [US gallon]
1	0.15 [0.04]
2	0.11 [0.03]
3	0.09 [0.02]



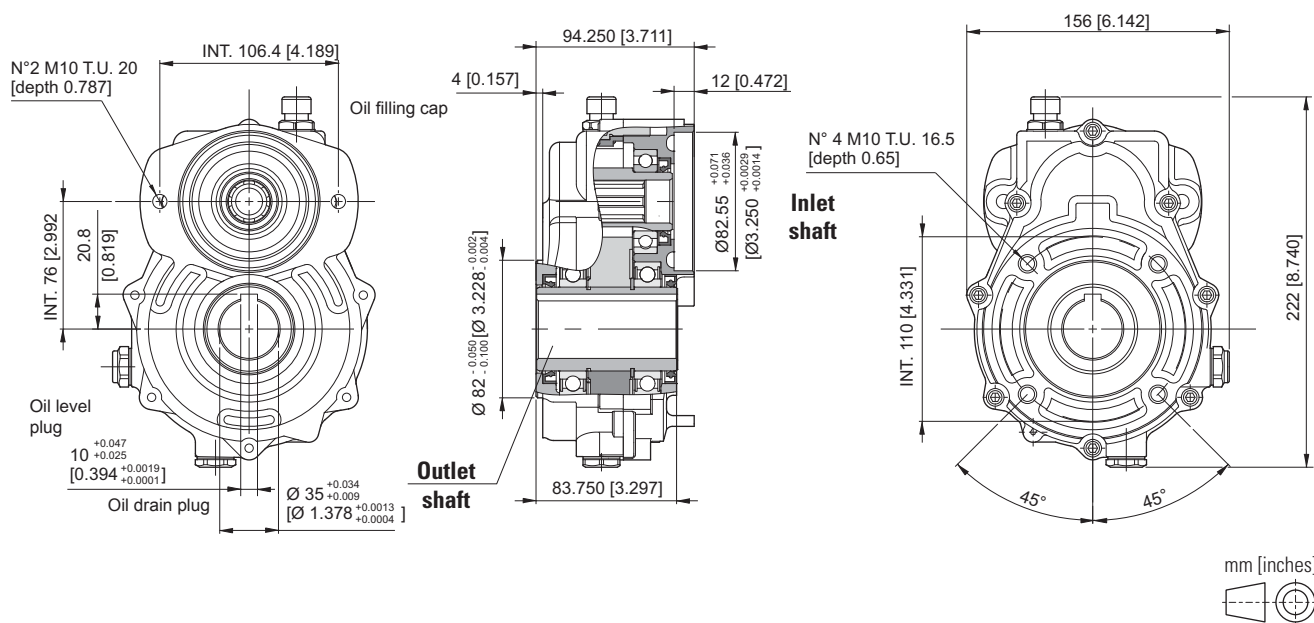
Output rpm		Input (transmission ratio)					
		0.66	0.50	0.40	0.33	0.29	0.26
200	curve	1	2	3	4	5	6
	rpm	300	400	500	600	700	760

## SPARE PARTS

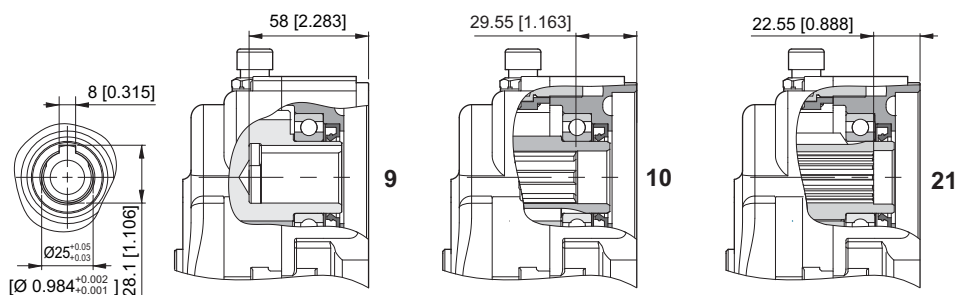


When ordering spare parts, specify reference number, gearbox model, PTO type and transmission ratio.

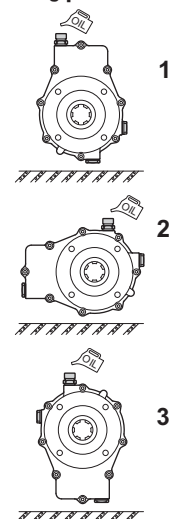
## SPEED REDUCER GEARBOX SAE A



### Inlet shaft



### Mounting positions



## ORDERING CODE

RD42/SAE - \* -1/ \*\*\* - \*\* - \*

RD42/SAE = Speed reducers (cast iron body)

**Output shaft**  
4 = Female Ø 35 mm

**Transmission ratio**  
0,66 = 1.5 : 1  
0,33 = 3.0 : 1  
0,29 = 3.4 : 1

**Mounting positions**  
1 / 2 / 3

**Input shaft**  
9 = Female Ø 25 \*  
10 = Female SAE 6B  
21 = Female Z14 DIN 5482 (25x22)

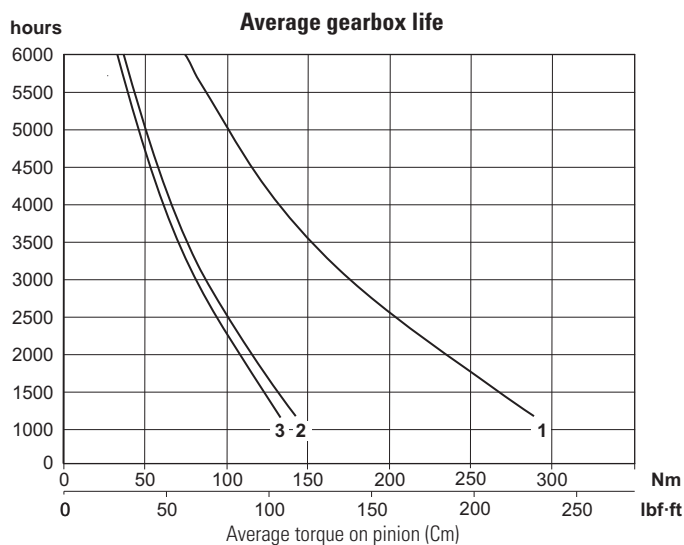
\* Only for transmission ratio: 0.66 - 0.50 - 0.40 - 0.33

Coupling for pump to be required to our sales department.

## TECHNICAL DATA

Transmission ratio	Maximum torque Nm [lbf·ft] 200 rpm		Weight kg [lb]
	C1*	C2*	
0.66	289 [213]	152 [112]	7,8 [17.2]
0.33	142 [105]	75 [55]	8,3 [18.3]
0.29	133 [98]	70 [52]	8,5 [18.7]

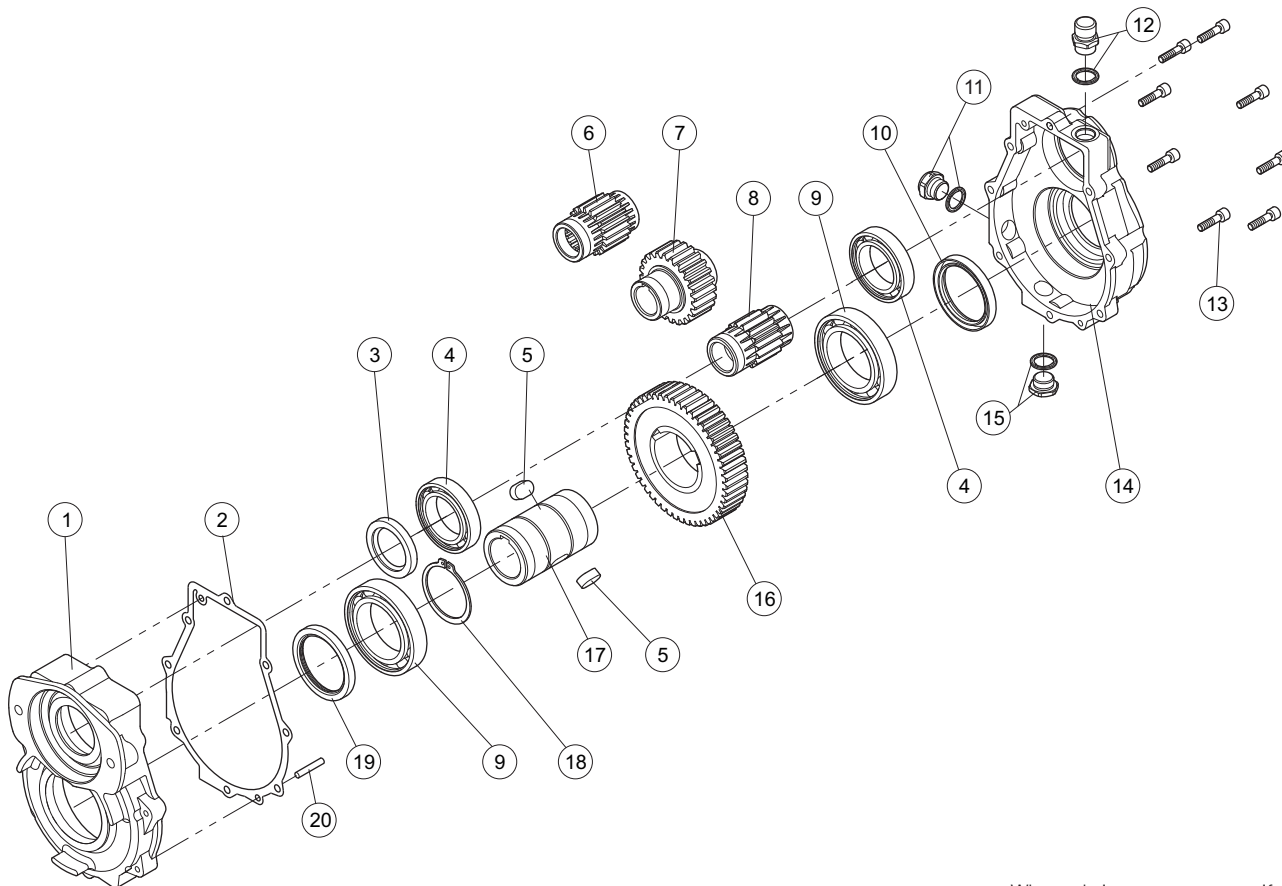
\* Maximum torque on pump:  
C1= maximum starting torque; C2= maximum torque for continuous duty.



Mounting positions	Oil liters [US gallon]
1	0.15 [0.04]
2	0.11 [0.03]
3	0.09 [0.02]

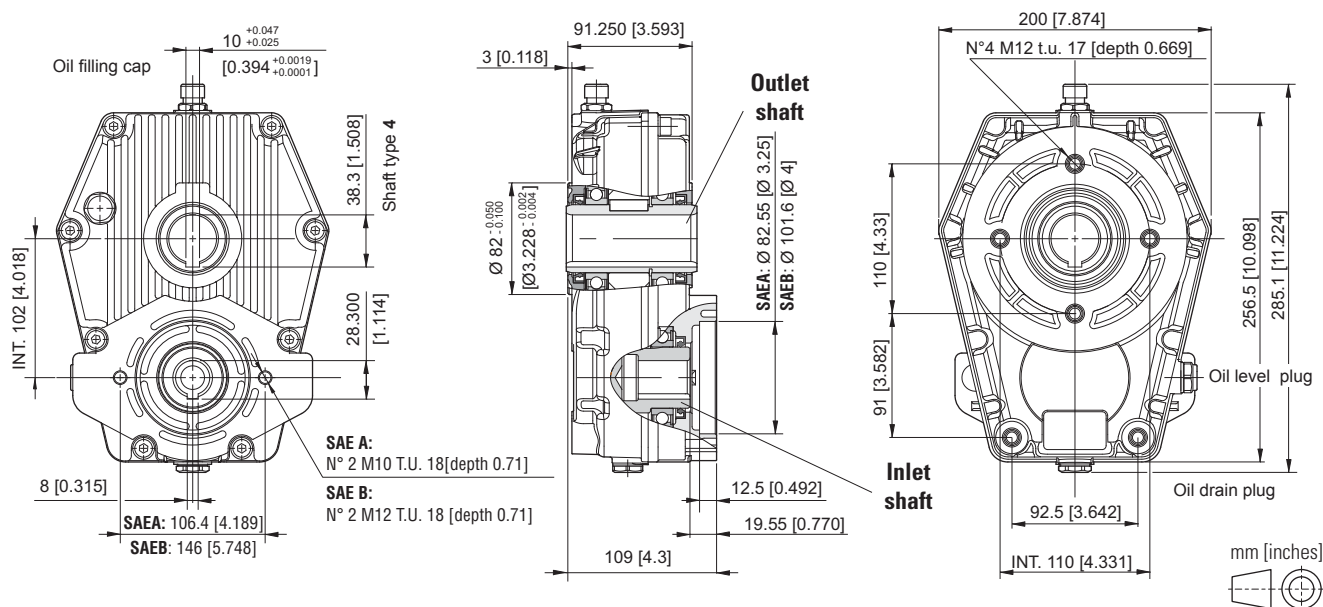
Output rpm	Input (transmission ratio)		
	0.66	0.33	0.29
200	curve 1	2	3
	rpm 300	600	700

## SPARE PARTS

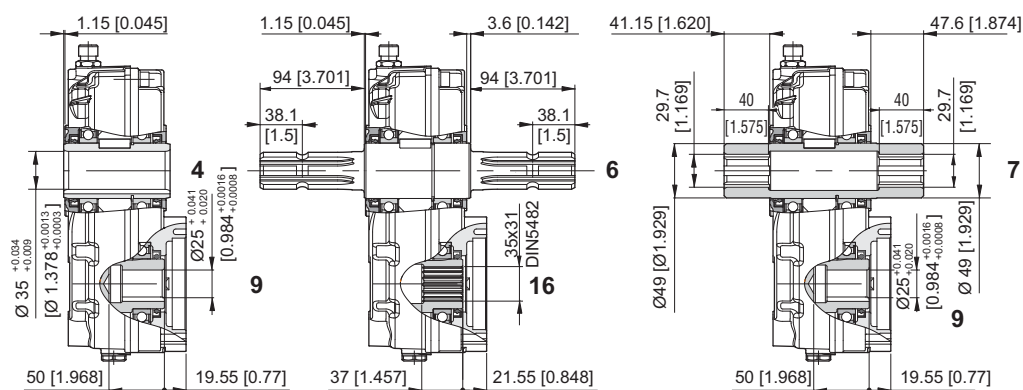


When ordering spare parts, specify reference number, gearbox model, PTO type and transmission ratio.

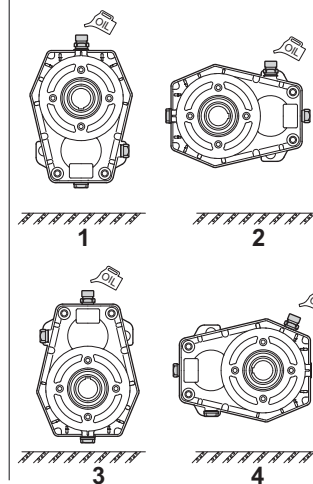
## SPEED REDUCER GEARBOX SAE A/B



### Shaft



### Mounting positions



### ORDERING CODE

RD52/SAE\* - \* -1/ \*\*\* - \*\* - \*

**RD52/SAE A** = Speed reducers (aluminium body)  
**RD52/SAE B** = Speed reducers (aluminium body)

#### Output shaft

**4** = Female Ø 35 mm  
**6** = Male/Male 1" 3/8 DIN 9611  
**7** = Female/Female 1" 3/8 DIN 9611

#### Transmission ratio

**0,66** = 1.5 : 1  
**0,50** = 2.0 : 1  
**0,38** = 2.6 : 1  
**0,33** = 3.0 : 1  
**0,29** = 3.4 : 1  
**0,26** = 3.8 : 1

#### Mounting positions

**1 / 2 / 3 / 4**

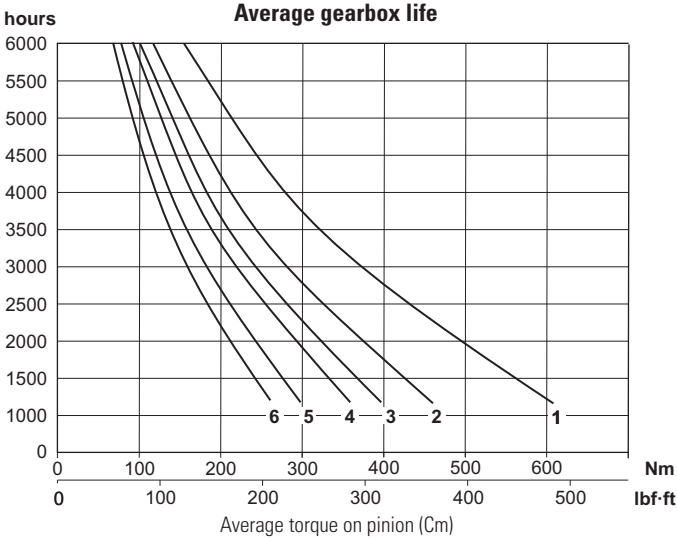
#### Input shaft

**9** = Female Ø 25  
**16** = Female Z18 DIN 5482 (35x31)

Coupling for pump to be required to our sales department.

## TECHNICAL DATA

Transmission ratio	Maximum torque Nm [lbf·ft] 200 rpm		Weight kg [lb]
	C1*	C2*	
0.66	608 [448]	320 [236]	9,5 [20.9]
0.50	460 [339]	242 [178]	7,9 [17.4]
0.38	397 [293]	209 [154]	8,3 [18.3]
0.33	359 [265]	189 [139]	8,2 [18.1]
0.29	298 [220]	157 [116]	8,8 [19.4]
0.26	261 [193]	137 [101]	7,9 [17.4]

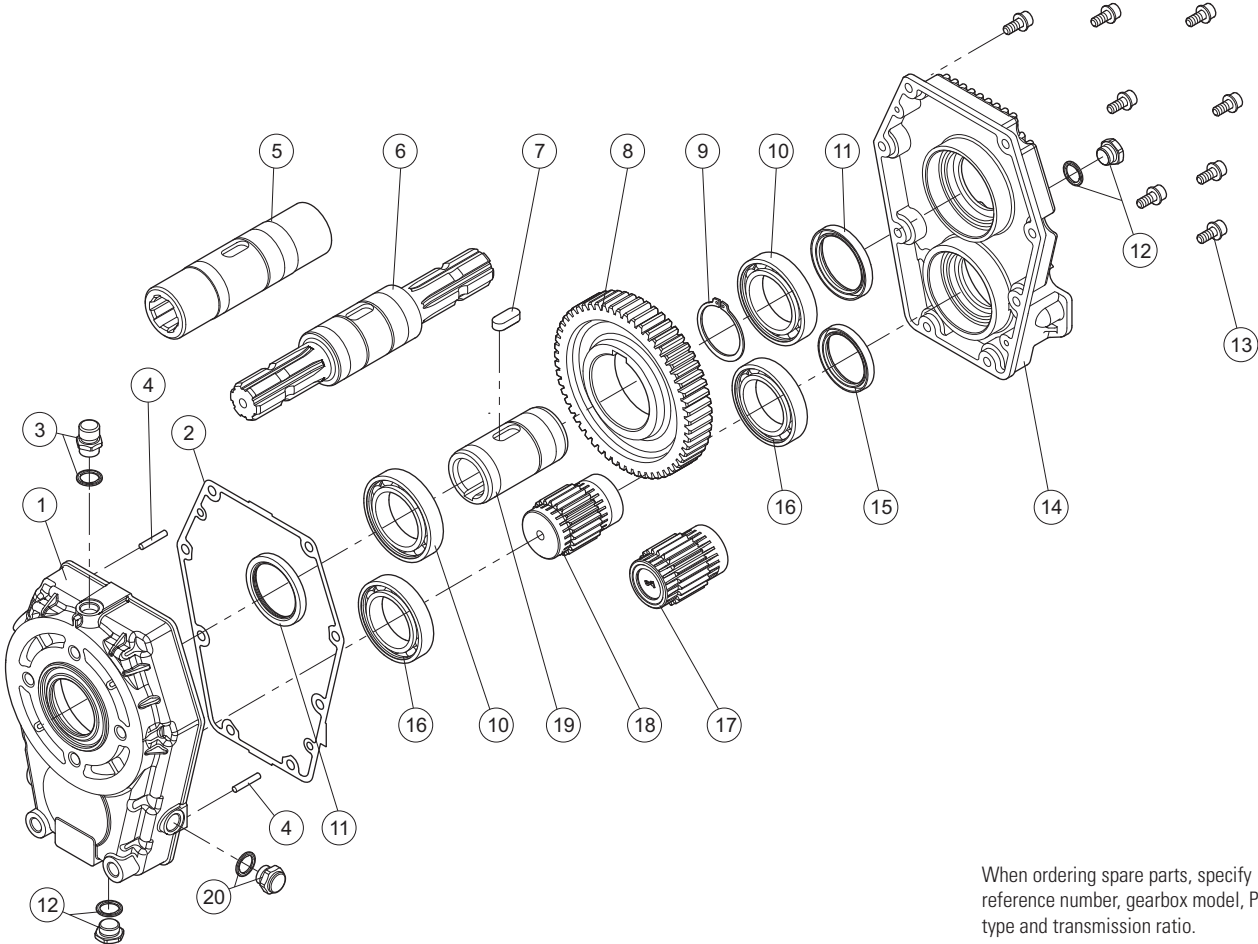


\* Maximum torque on pump:  
C1= maximum starting torque; C2= maximum torque for continuous duty.

Mounting positions	Oil liters [US gallon]
1	0.34 [0.09]
2	0.80 [0.21]
3	0.52 [0.14]
4	0.75 [0.20]

Output rpm		Input (transmission ratio)					
		0.66	0.50	0.38	0.33	0.29	0.26
200	curve	1	2	3	4	5	6
	rpm	300	400	500	600	680	760

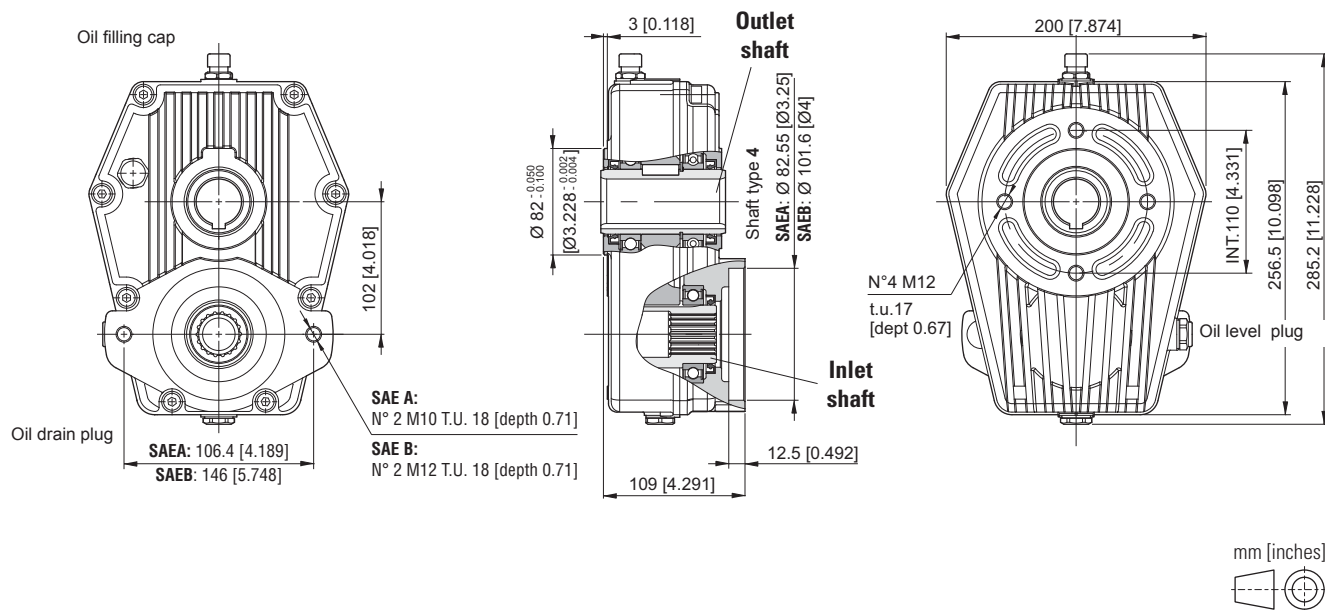
## SPARE PARTS



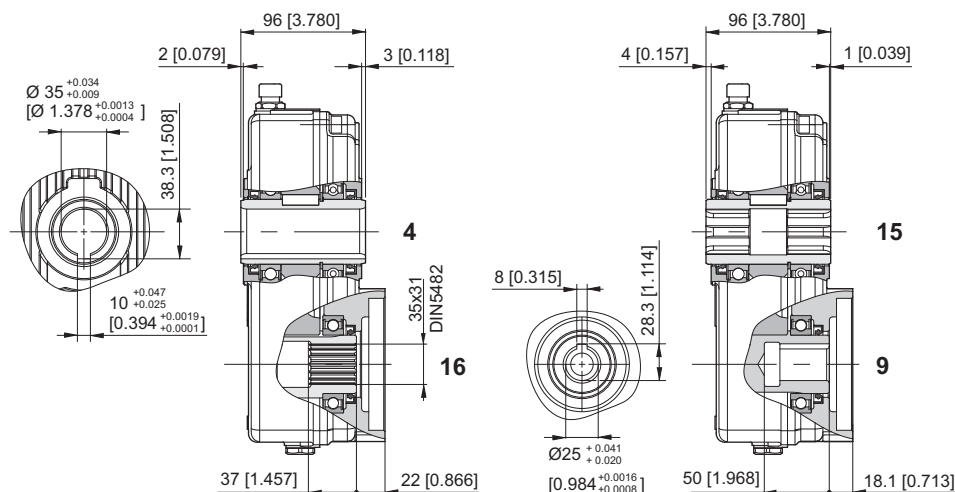
When ordering spare parts, specify reference number, gearbox model, PTO type and transmission ratio.



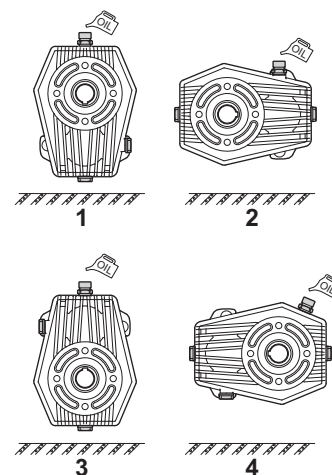
## SPEED REDUCER GEARBOX SAE A/B



### Shaft



### Mounting positions



## ORDERING CODE

RD62/SAE\* - \*\* -1/ \*\*\* - \*\* - \*

**RD62/SAE A** = Speed reducers (cast iron body)  
**RD62/SAE B** = Speed reducers (cast iron body)

### Output shaft

**4** = Female Ø 35 mm  
**15** = Female 1" 3/8 DIN 9611 (short)

**Mounting positions**  
**1 / 2 / 3 / 4**

### Input shaft

**9** = Female Ø 25  
**16** = Female Z18 DIN 5482 (35x31)

### Transmission ratio

**0,66** = 1.5 : 1  
**0,50** = 2.0 : 1  
**0,38** = 2.6 : 1  
**0,33** = 3.0 : 1  
**0,29** = 3.4 : 1  
**0,26** = 3.8 : 1

Coupling for pump to be required to our sales department.

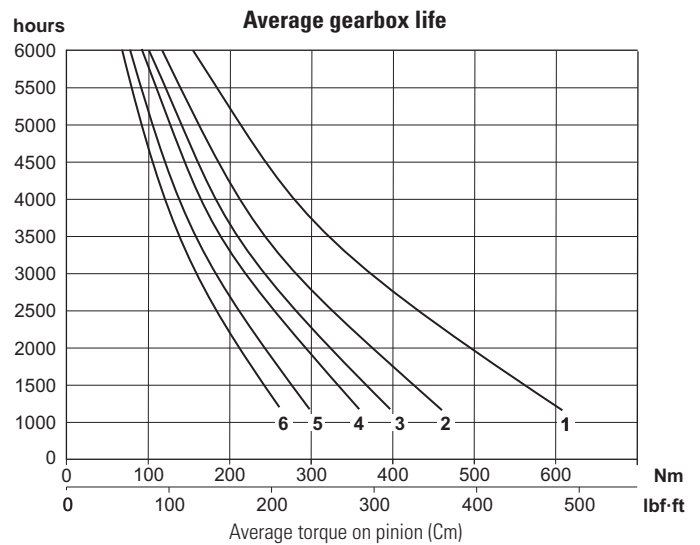


## TECHNICAL DATA

Transmission ratio	Maximum torque Nm [lbf·ft]		Weight kg [lb]
	200 rpm		
	C1*	C2*	
0.66	608 [448]	320 [236]	9,5 [20.9]
0.50	460 [339]	242 [178]	7,9 [17.4]
0.38	397 [293]	209 [154]	8,3 [18.3]
0.33	359 [265]	189 [139]	8,2 [18.1]
0.29	298 [220]	157 [116]	8,8 [19.4]
0.26	261 [193]	137 [101]	7,9 [17.4]

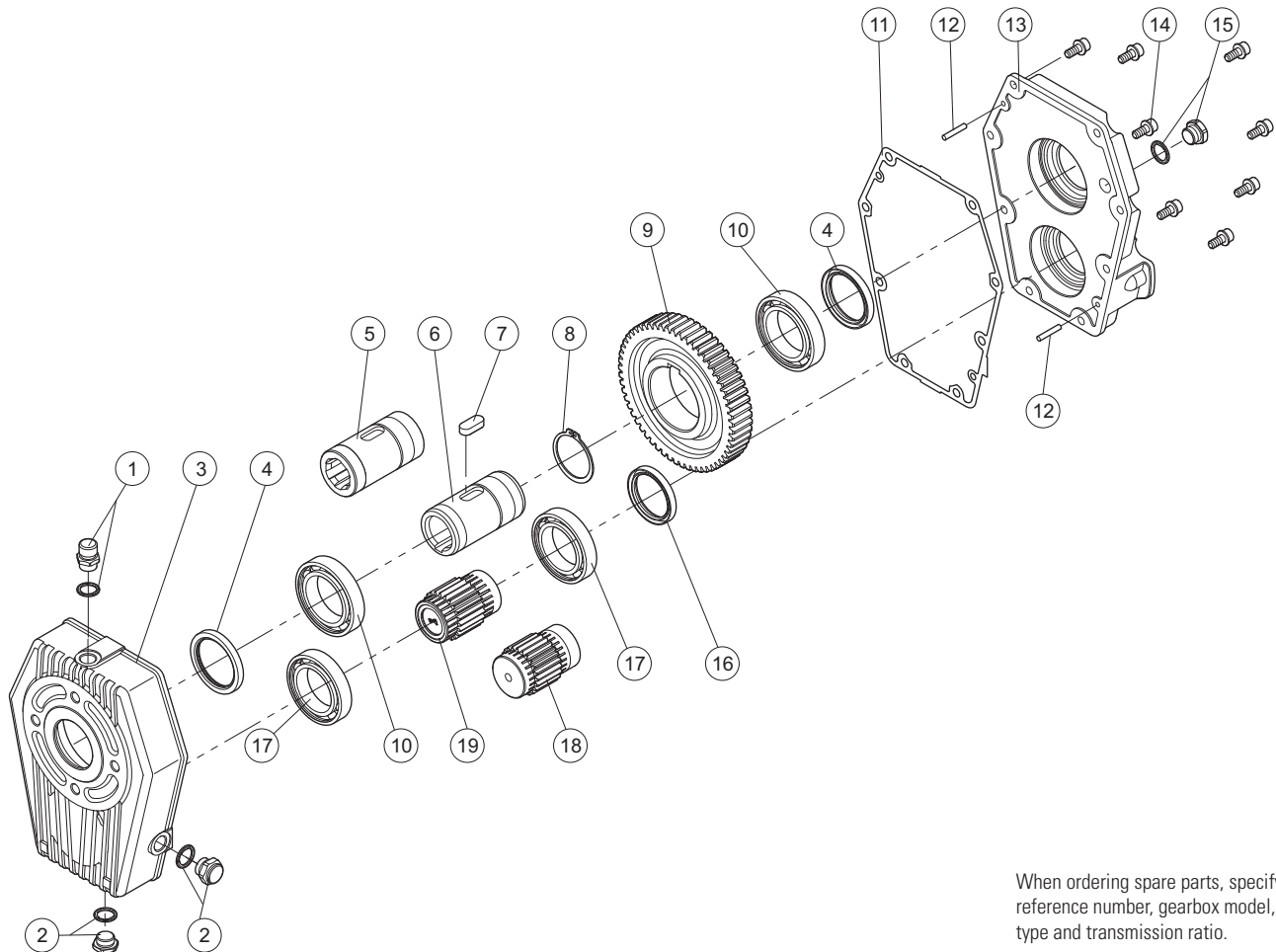
\* Maximum torque on pump:  
C1= maximum starting torque; C2= maximum torque for continuous duty.

Mounting positions	Oil liters [US gallon]
1	0.34 [0.09]
2	0.80 [0.21]
3	0.52 [0.14]
4	0.75 [0.20]



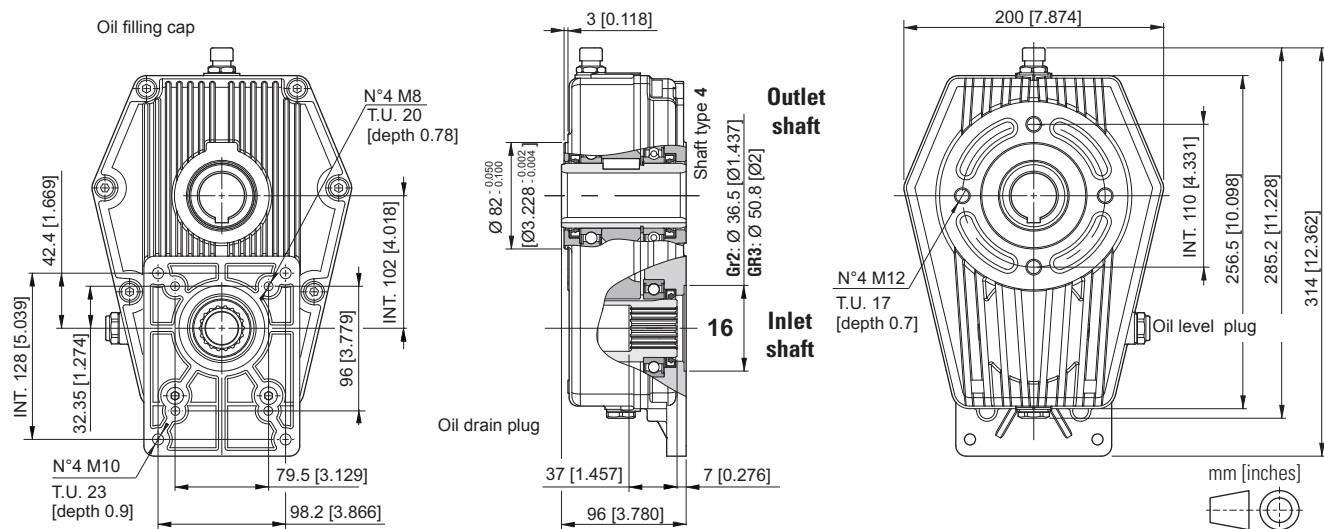
Output rpm		Input (transmission ratio)					
		0.66	0.50	0.38	0.33	0.29	0.26
200	curve	1	2	3	4	5	6
	rpm	300	400	500	600	680	760

## SPARE PARTS

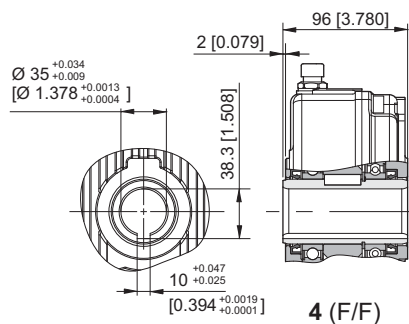


When ordering spare parts, specify reference number, gearbox model, PTO type and transmission ratio.

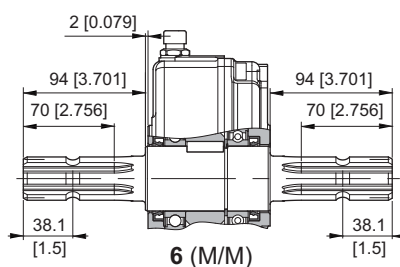
## SPEED REDUCER GEARBOX WITH PTO FOR UNIFIED GR.2/3 PUMPS



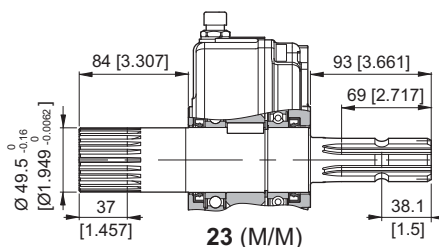
### Outlet shaft



4 (F/F)

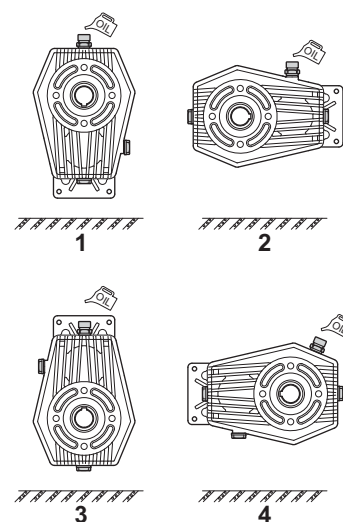


6 (M/M)



23 (M/M)

### Mounting positions



### ORDERING CODE

RD62/B - \*\* -1/ \*\*\* - \*\* - \*

**RD62/B** = Speed reducers (cast iron body)

#### Output shaft

4 = Female Ø 35 mm  
6 = Male/Male 1" 3/8 DIN 9611  
23 = Male 50x45 Z=24 DIN 5482  
Male 1" 3/8 DIN 9611

**Mounting positions**  
1 / 2 / 3 / 4

#### Input shaft

16 = Female Z18 DIN 5482

#### Transmission ratio

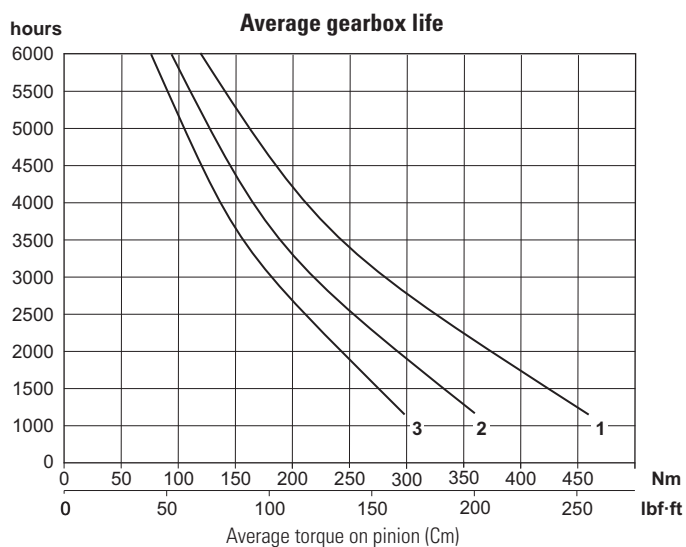
0,50 = 2.0 : 1  
0,33 = 3.0 : 1  
0,29 = 3.4 : 1

Coupling for pump to be required to our sales department.

## TECHNICAL DATA

Transmission ratio	Maximum torque Nm [lbf·ft] 200 rpm		Weight kg [lb]
	C1*	C2*	
0.50	460 [339]	242 [178]	14 [30,9]
0.33	359 [265]	189 [139]	14 [30,9]
0.29	298 [220]	157 [116]	14 [30,9]

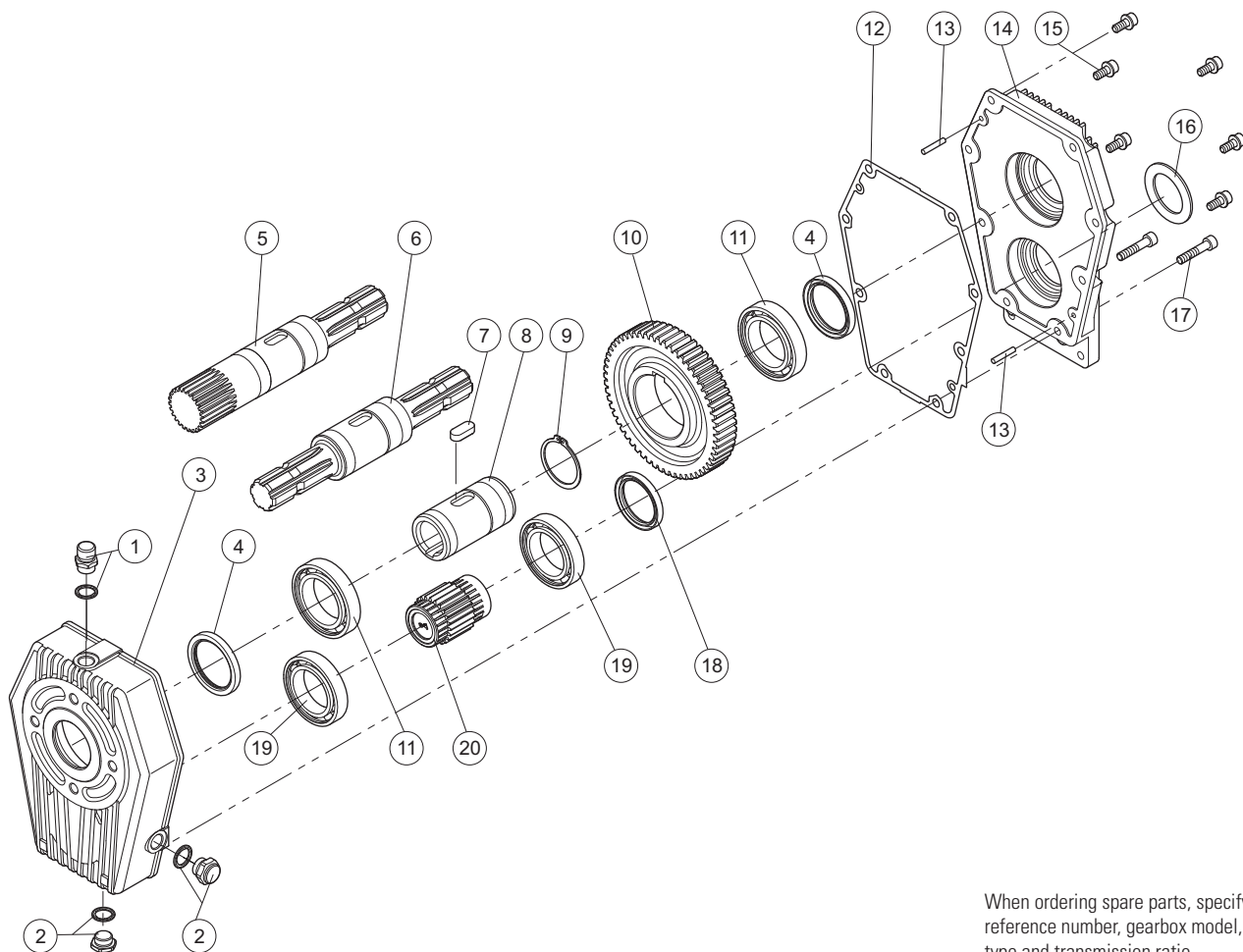
\* Maximum torque on pump:  
C1= maximum starting torque; C2= maximum torque for continuous duty.



Mounting positions	Oil liters [US gallon]
1	0.34 [0.09]
2	0.80 [0.21]
3	0.52 [0.14]
4	0.75 [0.20]

Output rpm	Input (transmission ratio)		
	0.50	0.33	0.29
curve	1	2	3
200 rpm	400	600	680

## SPARE PARTS



When ordering spare parts, specify reference number, gearbox model, PTO type and transmission ratio.

## Note

**BREVINI®**

---

*Motion Systems*

## Note

[illegible]

## Note

**BREVINI®**

---

*Motion Systems*







**BREVINI®**

*Motion Systems*

Code DOC00071 - Rev.03

**Dana Motion Systems Italia S.r.l.**

Fluid Power Division

Sede operativa: Via Giulio Natta 1, 42124 Reggio Emilia - Italy  
Tel: +39.0522.270711 - Fax: +39.0522.505856

Sede legale: Via Luciano Brevini 1/A, 42124 Reggio Emilia - Italy  
Tel: +39.0522.9281 - Fax: +39.0522.928300

[www.dana.com/brevini](http://www.dana.com/brevini) - [dana.re@dana.com](mailto:dana.re@dana.com)

