

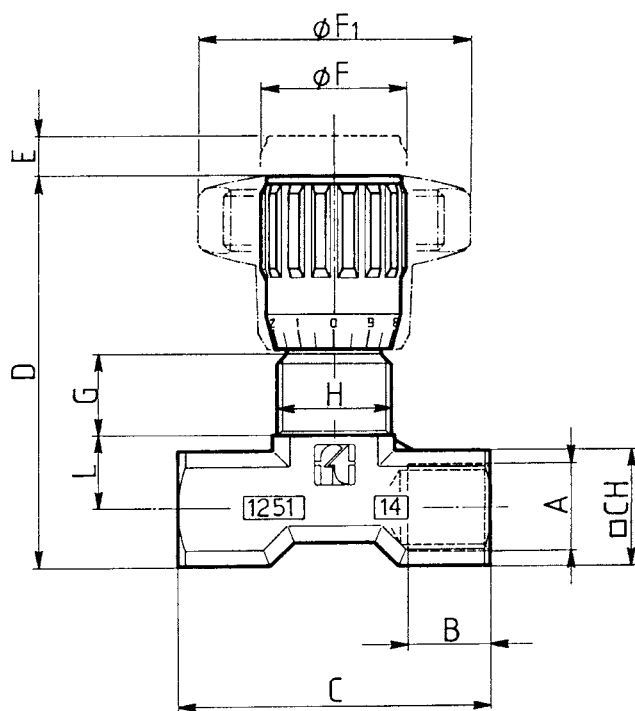


## MATERIALS

|                    |                                  |
|--------------------|----------------------------------|
| BODY               | OT 58 - UNI 5705 - NICKEL-PLATED |
| NEEDLE             | X 10 CR NI S 1809 - UNI 6900     |
| OR                 | NITRILE                          |
| ANTIEXTRUSION RING | PTFE                             |
| KNOB               | GD AL SI 12 - UNI EN AB 46100    |
| KNOB (MP)          | ABS                              |

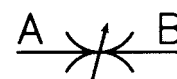
## EXAMPLE FOR ORDERING

| ACCESSORIES BY REQUEST |              |      |                   |            |          |
|------------------------|--------------|------|-------------------|------------|----------|
|                        | CODE         | TYPE | PANEL<br>RING NUT | VITON SEAL | KNOB ABS |
| BRASS                  | FT 1251/2-01 | 38   | G                 | V          | MP       |
| STAINLESS<br>STEEL     | FT 2251/2-01 | 14   | G                 | -          | MP       |



## DIMENSIONS

| TYPE | A<br>UNI 338 | B  | C  | D   | E   | ØF | ØF1 | G    | H       | L    | CH | WEIGHT<br>KG |
|------|--------------|----|----|-----|-----|----|-----|------|---------|------|----|--------------|
| 18   | 1/8"G        | 8  | 40 | 55  | 4   | 22 | 40  | 12   | M15x1   | 9,5  | 15 | 0,105        |
| 14   | 1/4"G        | 12 | 46 | 57  | 4,5 | 22 | 40  | 11,5 | M17x1   | 11,5 | 18 | 0,122        |
| 38   | 3/8"G        | 13 | 55 | 69  | 7   | 27 | 50  | 12,5 | M20x1   | 15   | 22 | 0,233        |
| 12   | 1/2"G        | 16 | 70 | 82  | 10  | 33 | 70  | 13   | M25x1,5 | 19   | 27 | 0,455        |
| 34   | 3/4"G        | 20 | 91 | 100 | 12  | 38 | 80  | 15   | M30x1,5 | 22   | 34 | 0,860        |



## DOUBLE-ACTING CONTROL VALVES FEMALE-FEMALE IN LINE

They allow the regulation of flow in both directions.

Notable from an aesthetical point of view they are built with materials which are suitable also for applications with fluids different from oil (such as: water, gas and liquids in general).

As an alternative to FT 257/2 (suitable up to 400 bar) where the working pressure does not exceed 210 bar and where ferrous materials cannot be used.

They have the same characteristics as the FT 257 series:

- accurate flow regulation;
- efficient metallic sealing;
- simple setting of flow rates;
- secure against accidental needle withdrawal;
- secure needle position with locking screw inserted in the knob;
- provision for panel mounting, for which special lock nut (G) is supplied on request.

For use with pressure up to 210 bar.

### On request

- Versions AISI 316 Code FT 2251/2-01
- Viton (V) seals
- NPT threads
- ABS (mp)Knob
- Complete with lock nut (G)



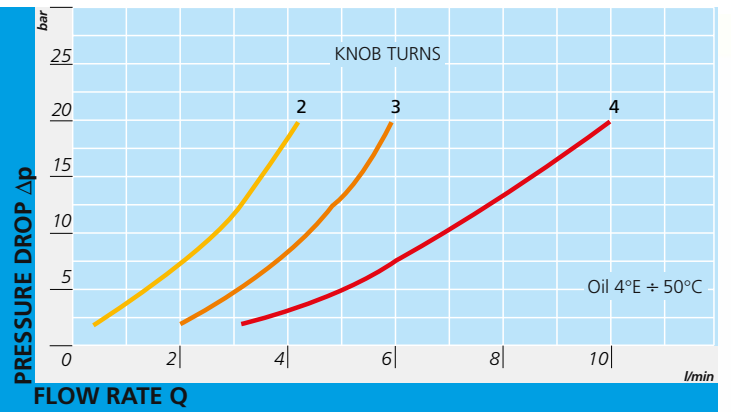
# FT 1251/2-01

## TECHNICAL DATA

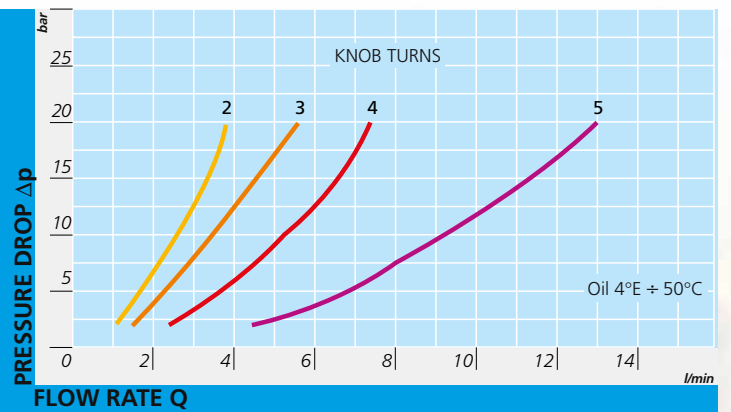
| TYPE | FLOW SQ MM <sup>2</sup> | MAX WORKING PRESSURE BAR | WORKING TEMPERATURE °C | FILTRATION GRADE μM |
|------|-------------------------|--------------------------|------------------------|---------------------|
| 18   | 7,07                    | 210                      | -20°/+100°             | 25                  |
| 14   | 12,57                   | 210                      | -20°/+100°             | 25                  |
| 38   | 19,64                   | 210                      | -20°/+100°             | 25                  |
| 12   | 50,27                   | 210                      | -20°/+100°             | 25                  |
| 34   | 78,54                   | 210                      | -20°/+100°             | 25                  |



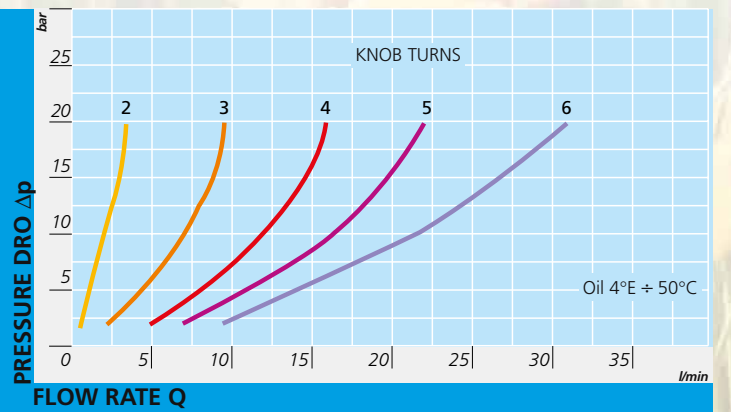
FT 1251/2-01-18



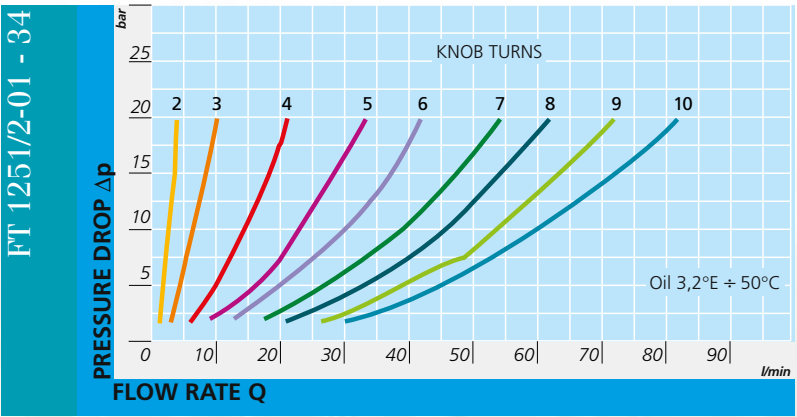
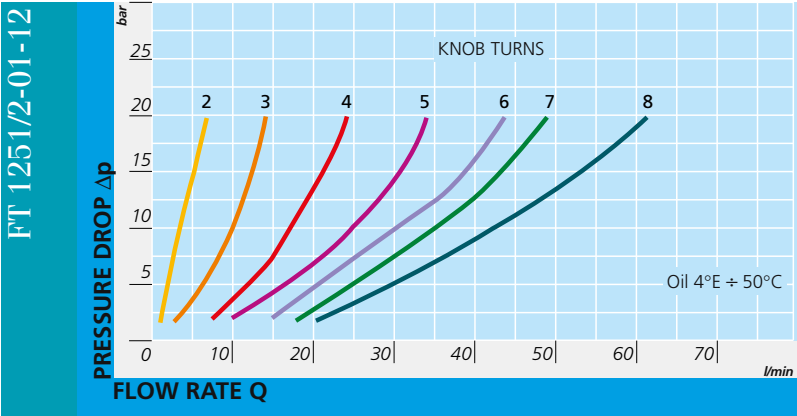
FT 1251/2-01-14



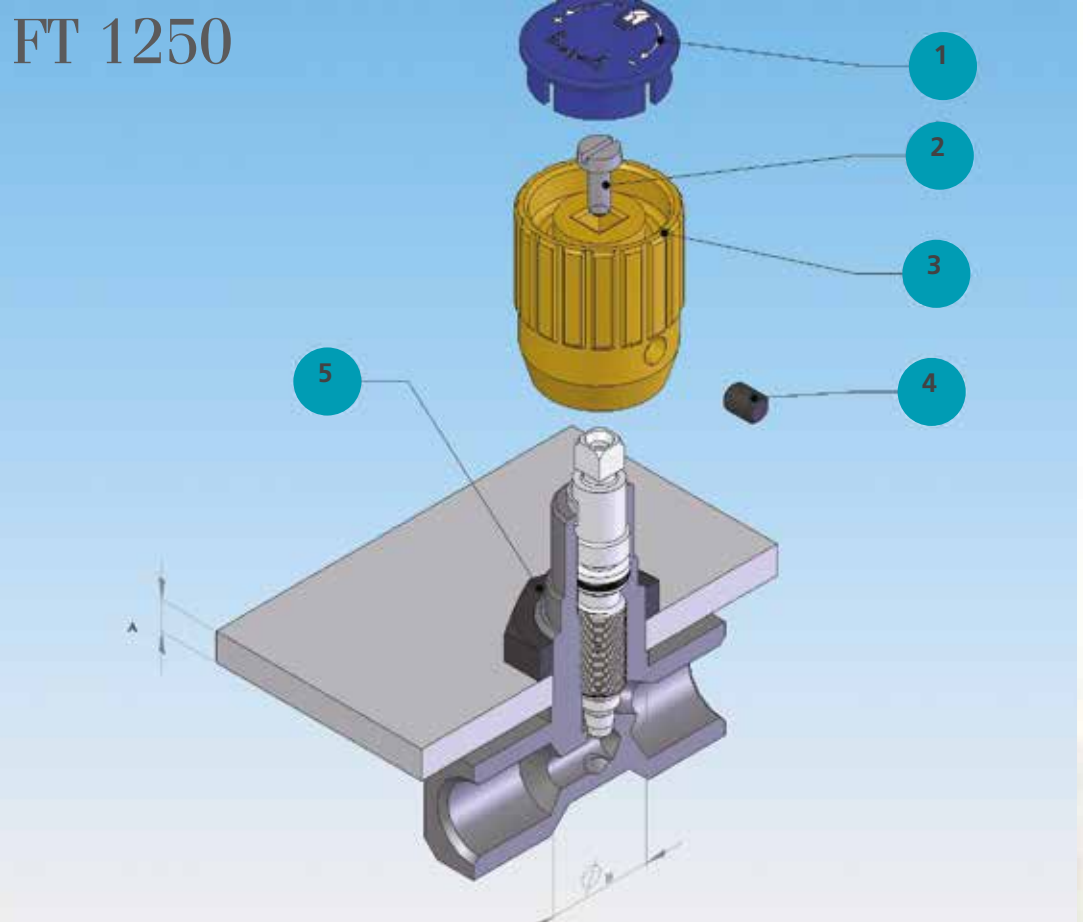
FT 1251/2-01-38



# FLOW RATE CURVES



FT 1251/2-01





## ASSEMBLY INSTRUCTION

|     |   |
|-----|---|
| 1°  | LOOSEN SCREW PRESSURE DOWEL (4)                               |
| 2°  | REMOVE PLUG (1)   |
| 3°  | REMOVE SCREW (2)  |
| 4°  | PULL OFF KNOB (3)   |
| 5°  | INSERT RING NUT (5), ON REQUEST IT IS SUPPLIED WITH THE VALVE |
| (A) | MAX. THICKNESS  |
| (B) | PANEL HOLE Ø  |

| TYPE VALVE | THICKNESS PANEL<br>A MAX | PANEL HOLE Ø B |
|------------|--------------------------|----------------|
| 18         | 5                        | 16             |
| 14         | 5                        | 18             |
| 38         | 5                        | 21             |
| 12         | 6                        | 26             |
| 34         | 6                        | 31             |



SERIE FT 1250