

## AM3UD...

SCREWS AND STUDS

CH. IV PAGE 21

# AM3UD... MODULAR DIRECT CHECK VALVES CETOP 3

**brevini**

AM.3.UD type modular check valves allow one way free flow, while flow in the opposite direction is prevented by means of a conical seated poppet.

They are available on single A, B, P and T lines, and on double A and B, P and T lines (see hydraulic symbols).

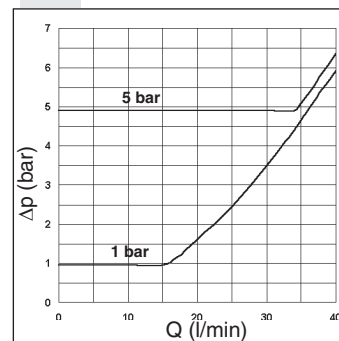
1 bar spring is standard, while a 5 bar rated spring is available on request.

Max. operating pressure	350 bar
Minimum opening pressure spring 1	1 bar
Minimum opening pressure spring 5	5 bar
Max. flow	40 l/min
Hydraulic fluids	Mineral oils DIN 51524
Fluid viscosity	10 ÷ 500 mm <sup>2</sup> /s at 50°
Fluid temperature	-25°C ÷ 75°C
Ambient temperature	-25°C ÷ 60°C
Max. contamination level	class 10 in accordance with NAS 1638 with filter $\beta_{25} \geq 75$
Weight	0,8 Kg

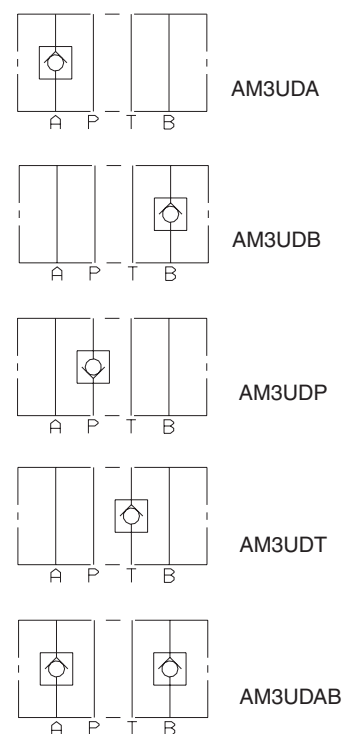
## ORDERING CODE

<b>AM</b>	Modular valve
<b>3</b>	CETOP 3/NG6
<b>UD</b>	Direct check valve
<b>**</b>	Control on lines <b>A / B / P / T / AB</b>
<b>*</b>	Minimum opening pressure <b>1</b> = 1 bar <b>5</b> = 5 bar
<b>**</b>	<b>00</b> = No variant <b>V1</b> = Viton
<b>2</b>	Serial No.

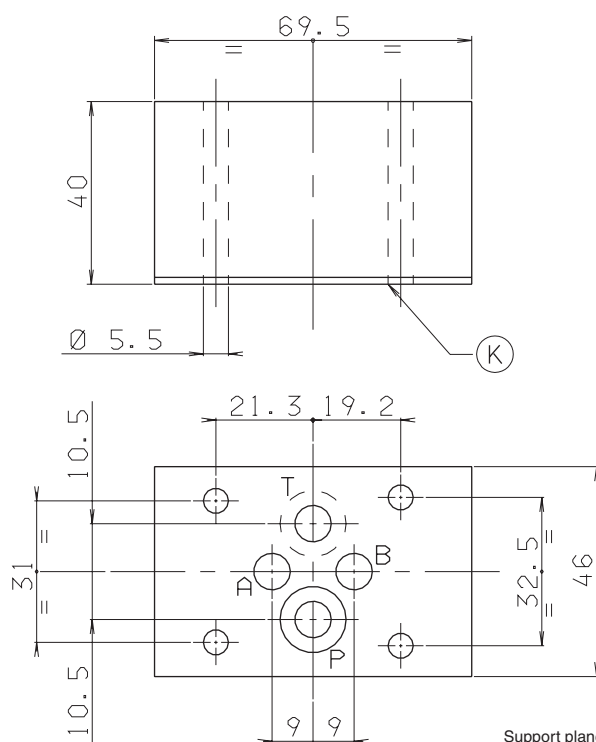
## PRESSURE DROPS



## HYDRAULIC SYMBOLS



## OVERALL DIMENSIONS



K = OR plate

Support plane specifications

