

## AM5VR...

CVR.20... BFP CARTRIDGE CATALOGUE  
SCREWS AND STUDS CH. IV PAGE 36

# AM5VR... MODULAR PRESSURE REDUCING VALVES WITH RELIEVING - PILOT OPERATED CETOP 5



These pressure reducing valves ensure a minimum pressure variation on the P or A port with changing flow rate up to 90 l/min.

Three spring types allow adjustment with the range 7 ÷ 250 bar. Manual adjustment is available by a grub screw or plastic knob.

The RELIEVING SYSTEM inside the valve AM.5.VR allows the passage from the setting pressure line to T line of the flow through the valve to avoid the increasing of pressure in the reduced-pressure line by diverting exceeding flow to reservoir.

A by pass module with check valve for free flow from A to AR port (see hydraulic symbol) is available.

Max. operating pressure	350 bar
Setting ranges:	spring 1 60 bar
	spring 2 120 bar
	spring 3 250 bar

## Maximum allowed $\Delta p$ pressure between the inlet and outlet pressure 150 bar

Max. flow	90 l/min
Draining on port T	0,5 ÷ 0,7 l/min
Hydraulic fluids	Mineral oils DIN 51524
Fluid viscosity	10 ÷ 500 mm <sup>2</sup> /s
Fluid temperature	-25°C ÷ 75°C
Ambient temperature	-25°C ÷ 60°C
Max. contamination level	class 10 in accordance with NAS 1638 with filter $\beta_{25} \geq 75$
Weight	3,73 Kg
Weight by-pass version	6,56 Kg

## ORDERING CODE

AM

Modular valve

5

CETOP 5/NG10

VR

Pilot operated pressure reducing valve with relieving

\*

Control on lines

P = Drain on T

A = Drain on T

D = Drain on B reduct pressure on A

\*

Drain connection

E = External (only for control on the P line)

I = Internal (Standard)

B

Version with by-pass on line A only

Omit if not required

\*

Type of adjustment

M = Plastic knob

C = Grub screw

\*

Setting ranges

1 = max. 60 bar (white spring)

2 = max. 120 bar (yellow spring)

3 = max. 250 bar (green spring)

\*\*

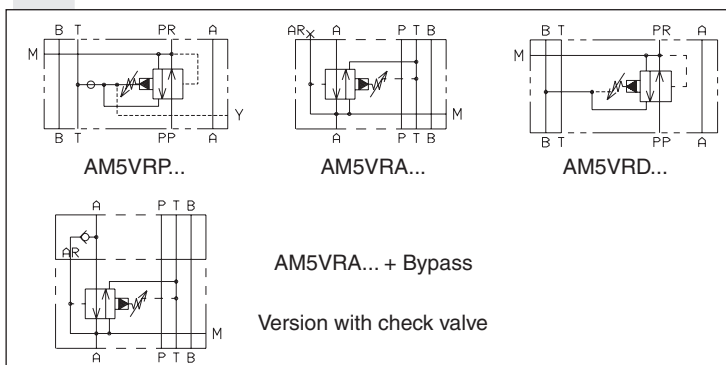
00 = No variant

V1 = Viton

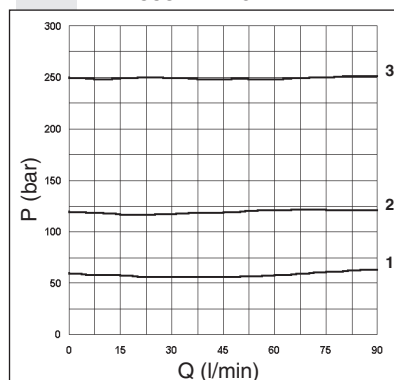
1

Serial No.

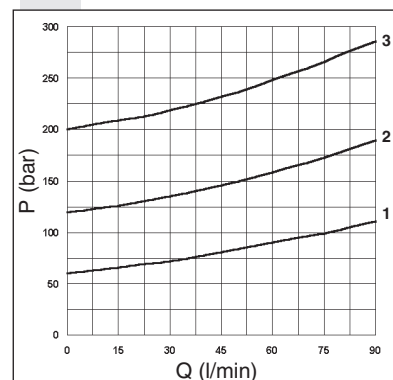
## HYDRAULIC SYMBOLS



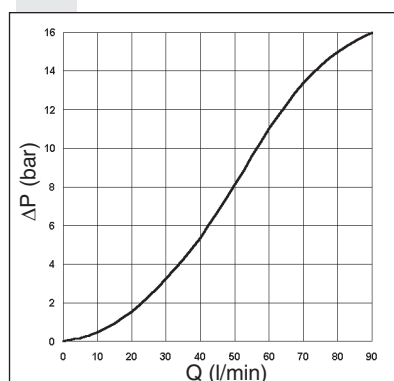
## PRESSURE-FLOW RATE



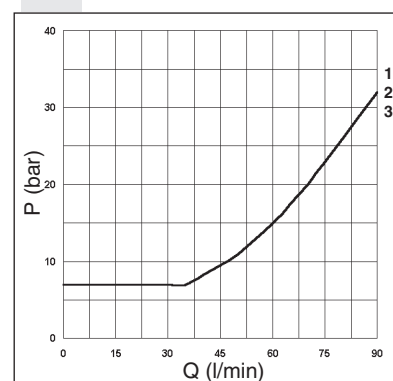
## PRESSURE-FLOW OF RELIEVING



## $\Delta P$ AM.5.VR... + BY-PASS



## MINIMUM SETTING PRESSURE



To change valves AM.5.VR.P... from internal to external drainage it is necessary:

- screw out the plug on the Y port
- screw out the plug T.C.E.I. M8x1 from the body
- screw in a screw S.T.E.I. M6
- rescrew the T.C.E.I. M8x1 plug on the body

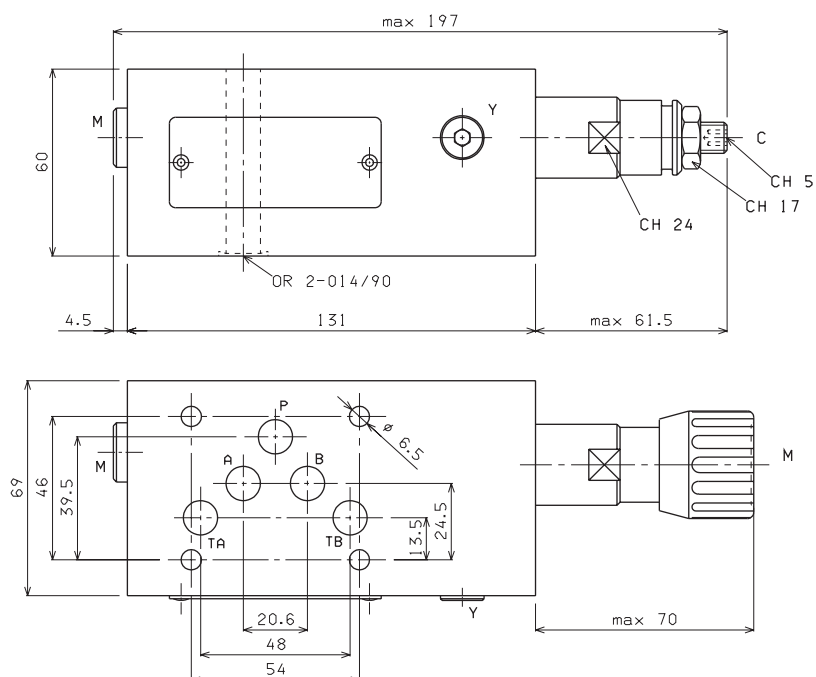
**NOTE:** the external draining can be used as a piloting line (please, contact our Technical Service for other informations)

Curves n° 1 - 2 - 3 = setting ranges

The fluid used is a mineral oil with a viscosity of 46 mm<sup>2</sup>/s at 40°C. The tests have been carried out at a fluid temperature of 50°C.

**OVERALL DIMENSIONS**

**AM5VRP... / AM5VRD...**



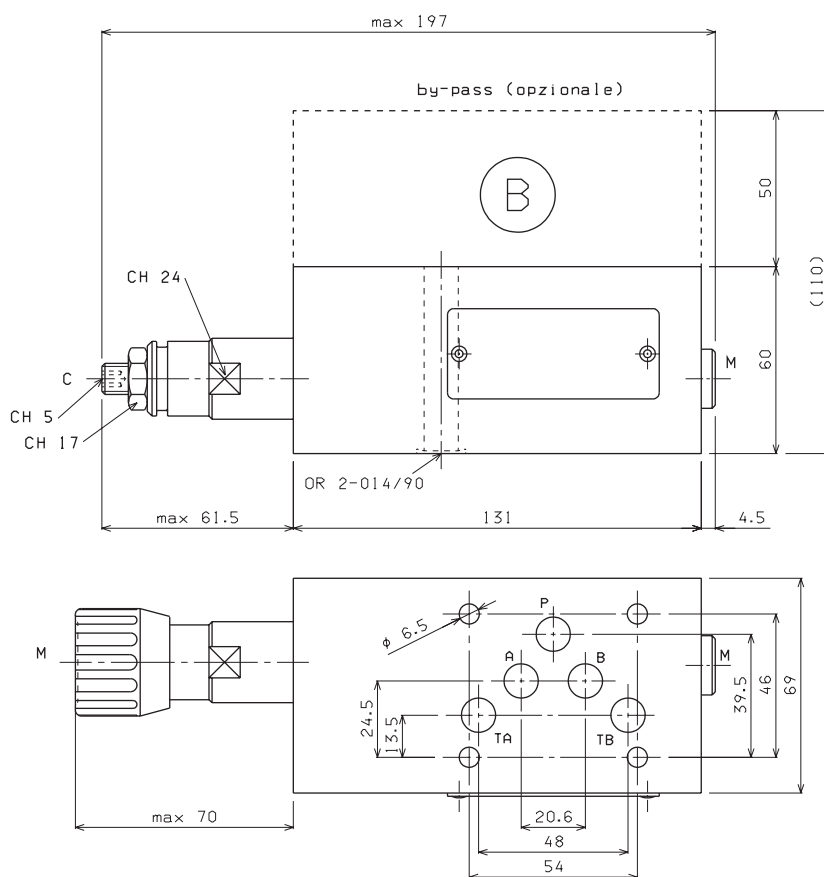
**AM5VRA... + Bypass**

**(B)** By-pass (optional)

Ordering code:

V89.46.0000

(if ordered separately)



Type of adjustment

**M** Plastic knob

**C** Grub screw

Support plane  
specifications

