

Bladder-type accumulator HAB

RE 50170

Edition: 03.2014

Replaces: 02.2012



- ▶ Component series 4X
- ▶ Nominal volume 1 to 50 liters
- ▶ Maximum operating pressure 350 bar

Features

- ▶ Hydraulic accumulator as per Pressure Equipment Directive 97/23/EC
- ▶ Bladder material for different application
- ▶ Use:
 - Energy storage for systems with intermittent operation
 - Energy reserve for emergencies
 - Compensation for leakage
 - Shock and vibration damping
 - Volume compensation for pressure and temperature changes
- ▶ Certifications
 - CE label (as per Pressure Equipment Directive 97/23/EC)
 - CE + GOST label
 - ASME label (as per data sheet 51350)
- ▶ For information on available spare parts: visit www.boschrexroth.com/spc

Contents

Ordering code	2
Instruction manuals and declarations of conformity	3
Functional description	4
Technical data	5
Application, mode of operation	6
Calculation	6
Dimensions	10
Spare parts and accessories	11
Intended use	19
Safety instructions on hydraulic accumulators	19
Legal regulations	19
Safety devices	20

Ordering code

01	02	03		04		05	06	07	08		09	10	11	12	13		14
HAB		-		-	4x	/	2		G	-	2		1	1	1	-	

Type

01	Bladder-type accumulator	HAB
----	--------------------------	-----

Nominal volume

02	1 liters	1
	2.5 liters	2,5
	4 liters	4
	6 liters	6
	10 liters	10
	20 liters	20
	35 liters	35
	50 liters	50

Maximum permissible operating pressure

03	350 bar (1 to 6 liters)	350
	330 bar (10 to 50 liters)	330

Series

04	Series 40 to 49 (unchanged installation and connection dimensions)	4X
----	--	----

Gas filling pressure

05	< 2 bar	2
----	---------	---

Port size for hydraulic fluid¹⁾

		1	2,5	4	6	10	20	35	50	
06	G3/4	●	-	-	-	-	-	-	-	G05
	G1 1/4	-	●	●	●	-	-	-	-	G07
	G2	-	-	-	-	●	●	●	●	G09

Type of mounting (oil connection form)

07	Thread with inner radial sealing surface	G
----	--	---

Gas connection form

08	Gas valve for charging and testing device (see page 13)	2
----	---	---

Bladder material¹⁾

09	NBR	N
	ECO	E

Container material¹⁾

10	Steel	1
----	-------	---

Surface of container inner¹⁾

11	Steel	1
----	-------	---

Surface of port side¹⁾

12	Steel	1
----	-------	---

Certification (acceptance)

13	Acceptance according to 97/23/EC	CE
	Instructions for use	BA
	Acceptance in accordance with Gosudarstvenny Standard	GOST

14	State other details in plain language, e.g. special versions	
----	--	--

Ordering example

HAB10-330-4X/2G09G-2N111-CE

- = not available, ● = available

¹⁾ Other variants on request.

Instruction manuals and declarations of conformity

Instruction manuals valid for HAB1 to HAB50

Language	Instruction manual Material number	Document number
German	R901200925	RA50819410
English	R901200926	RA50820721
French	R901200927	RA50821267
Spanish	R901200928	RA50821286
Italian	R901200929	RA50821301
Chinese	R901200930	RA50821308
Russian	R901200931	RA50821321
Norwegian	R901200932	RA50821347
Polish	R901278729	RA50821354
Czech	R901278730	RA50820770
Romanian	R901289016	RA50821365
Hungarian	R901301675	RA50821372
Portuguese	R901338309	RA50821427

CE declarations of conformity

In the languages German, English, French

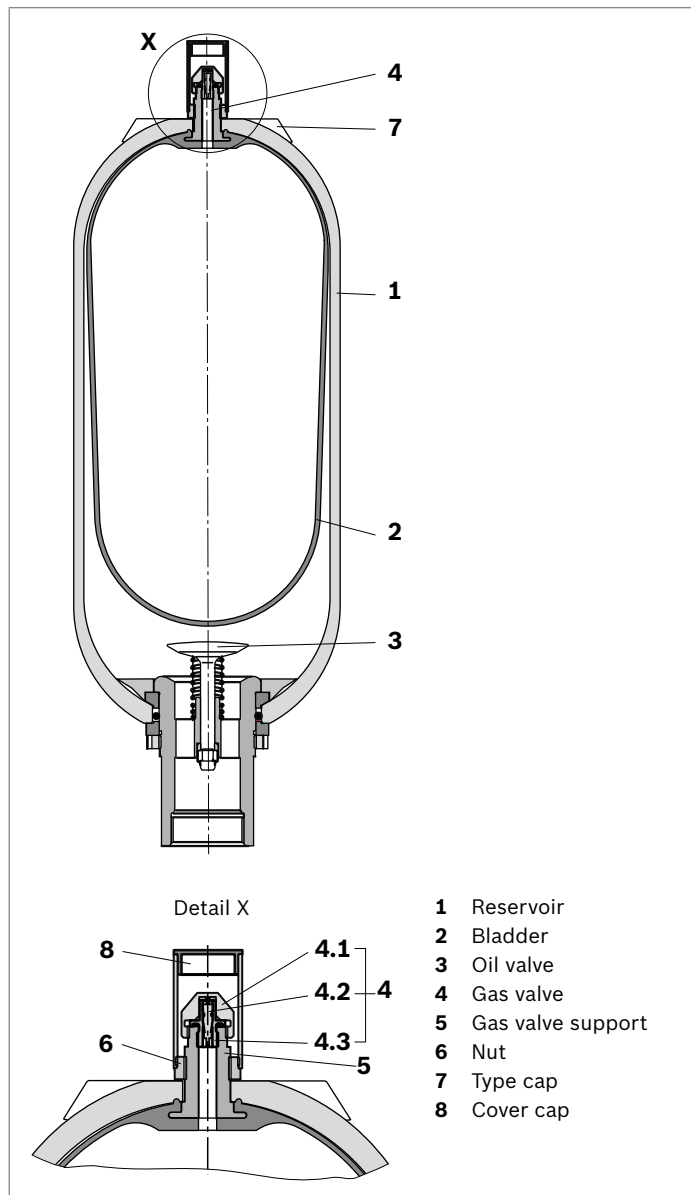
Nominal volume [l]	Bladder material NBR		Bladder material ECO	
	Material number	Document number	Material number	Document number
1	–	–	–	–
2,5	R901200940	RA50840060	R901200942	RA50840138
4				
6				
10	R901200941	RA50840104	R901200943	RA50840153
20				
35				
50				

CE + GOST declarations of conformity

In the languages German, English, Russian

Nominal volume [l]	Bladder material NBR	
	Material number	Document number
1	–	–
2,5	–	RA50767138
4		
6		
10	–	RA50767883
20		
35		
50		

Functional description



General

Hydraulic accumulators are hydrostatic devices which are used to store a certain amount of energy, which they dispense as necessary to the hydraulic system. Fluids are only compressible to a small extent, while gases are highly compressible. This difference is the basis for the operating principle of all gas-charged hydraulic accumulators. Depending on the design of the separating element, a distinction is made between bladder-type and diaphragm-type accumulators". Hydraulic accumulators essentially consist of a fluid section and a gas section with a gas-proof separator element. The fluid section is connected to the hydraulic circuit.

If a certain volume of pressurized gas is charged with a higher fluid pressure, the gas volume will reduce as fluid pressure increases; the gas pressure increases with the fluid pressure.

If the fluid pressure drops, the gas will expand, pressing the fluid back into the hydraulic system until the pressure is equalized again.

Bladder-type accumulator

Bladder-type accumulators consist of a seamless cylindrical pressure reservoir (1) made of high-strength steel.

Inside the container is an elastic bladder (2) which divides the accumulator into a gas section and a fluid section.

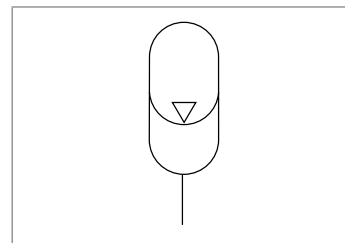
The bladder is filled with nitrogen via the gas valve (4). to the specified gas pressure p_0 .

The oil valve (3) is located in the oil port of the bladder-type accumulator. It closes when the pressure is higher on the gas side than on the fluid side. This prevents the bladder from exiting into the oil duct, which would destroy the bladder.

When the minimum operating pressure is reached, there should be a small volume of fluid between the bladder and the oil valve (approx. 10% of the nominal volume of the hydraulic accumulator). This prevents the bladder from coming into contact with the valve every time it expands. The gas valve (4) consists of a sealing cap (4.1), gas valve insert (4.2) and gas charging valve body (4.3). These parts can be exchanged individually.

The type cap (7) contains the technical data and features of the hydraulic accumulator.

Symbol



Technical data

General										
Weight	See table on page 10									
Design	Bladder-type accumulator									
Installation position	Fluid connection socket at bottom, others on request									
Mounting style	With clamps and console									
Ambient temperature range	−15 °C to +65 °C									
Line connection	Screw-in thread									
Hydraulic										
Nominal volume	V_{nom}	l	1	2.5	4	6	10	20	35	50
Effective gas volume	V_{eff}	l	1.0	2.4	3.7	5.9	9.2	18.1	33.4	48.7
Maximum permissible flow	q_{max}	l/min	240	600	600	600	900	900	900	900
Maximum permissible operating pressure	p_{max}	bar	350	350	350	350	330	330	330	330
Maximum permissible pressure fluctuation range	Δp_{dyn}	bar	200	200	200	200	200	200	200	200
Operating pressure and effective volume	See calculation on pages 6 to 9									
Hydraulic fluid	Hydraulic fluid according to DIN 51524; other fluids on request!									
Hydraulic fluids temperature range (others on request)	−15 °C to +80 °C (NBR) −35 °C to +80 °C (ECO)									
Pneumatic										
Filling gas	Nitrogen, cleanliness level 4.0, N ₂ = 99.99% by volume									
Gas filling pressure	p_0	< 2 bar								

Hydraulic fluids	Temperature range	Material
Mineral oils	-15 °C to +80 °C	NBR ¹⁾
	-35 °C to +80 °C	ECO ²⁾
HFC	-10 °C to +60 °C	NBR ¹⁾

Please consult us with respect to other hydraulic fluids and temperatures.

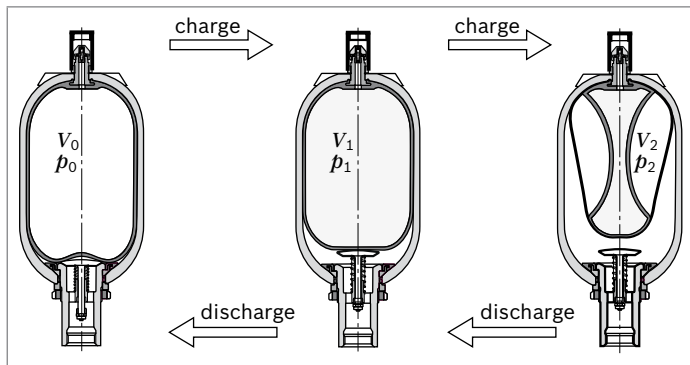
1) Acrylonitrile butadiene rubber (Perbunan)
2) Epichlorhydrin rubber

Application, mode of operation

Applications

Hydro-pneumatic accumulators have many different possible applications:

- ▶ Energy storage to eliminate the need for pump drive power on systems with intermittent operation.
- ▶ Energy reserve for emergencies, e.g. if the hydraulic pump fails.
- ▶ Compensation for leakage.
- ▶ Shock and vibration damping for periodic vibrations.
- ▶ Volume compensation for pressure and temperature changes.



Mode of operation

Fluids are practically incompressible and are therefore unable to store pressure energy. Rexroth hydro-pneumatic accumulators use the compressibility of a gas for fluid storage. Only nitrogen of cleanliness level 4.0 may be used! $N_2 = 99.99\%$ by volume

Calculation

Pressures

The following pressures are key factors in calculating an accumulator:

p_0	Gas filling pressure at room temperature and empty fluid space
$p_0(t)$	Gas charge pressure at operating temperature
$p_0(t_{\max})$	Gas charge pressure at max. operating temperature
p_1	Minimum positive operating pressure
p_2	Maximum positive operating pressure

The following values are recommended to achieve optimum utilization of the accumulator volume and a long service life:

- ▶ $p_0(t_{\max}) \sim 0.9 \times p_1$ (1)

The top hydraulic pressure should not exceed four times the filling pressure as otherwise bladder elasticity is overstressed, leading to excessive compression changes and strong gas heating:

- ▶ $p_2 \leq 4 \times p_0$ (2)

The service life of the accumulator bladder increases as the difference between p_1 and p_2 decreases. Correspondingly the degree of utilization of the maximum storage capacity is however also reduced.

Oil volumes

The pressures p_0 to p_2 result in the gas volumes V_0 to V_2 . Here, V_0 is also the nominal volume of the accumulator. The available oil volume ΔV is equal to the difference in gas volume V_1 and V_2 :

► $\Delta V \leq V_1 - V_2$ (3)

The gas volume that can be changed within one pressure difference is determined by the following equations:

a) To isothermal changes of condition of gases, i.e. if the gas cushion changes so slowly that there is enough time for the complete heat exchange between the nitrogen and its environment and the temperature therefore remains constant, the following applies

► $p_0 \times V_0 = p_1 \times V_1 = p_2 \times V_2$ (4.1)

b) In the case of adiabatic transformation, i.e. a rapid change in the gas cushion entailing a change in the temperature of the nitrogen, the following applies:

► $p_0 \times V_0^\chi = p_1 \times V_1^\chi = p_2 \times V_2^\chi$ (4.2)

χ = Ratio of the specific heat of the gas (adiabatic exponent), in the case of nitrogen = 1.4

In practice, transformation tends to follow adiabatic rules. Charging is frequently isothermal, discharging adiabatic. Taking into account the equations (1) and (2) ΔV is 50 % to 70 % of the accumulator nominal volume. As reference:

► $V_0 = 1.5 \text{ bis } 3 \times \Delta V$ (5)

Calculation diagram

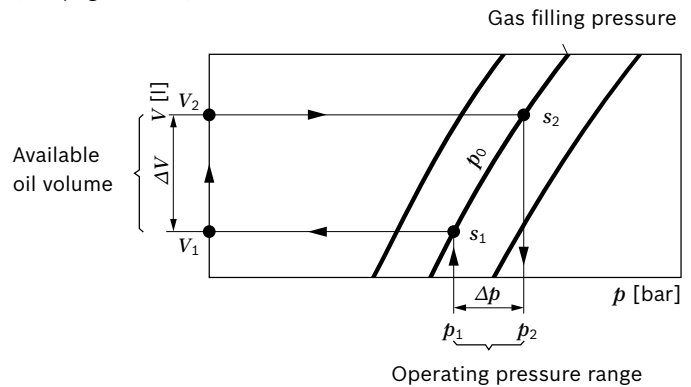
For the purpose of graphic determination, the formulas (4.1) and (4.2) are implemented in the diagrams on pages 8 to 9. Depending on the purpose, the available oil volume, accumulator size or pressures can be ascertained.

Correction factor K_i and K_a

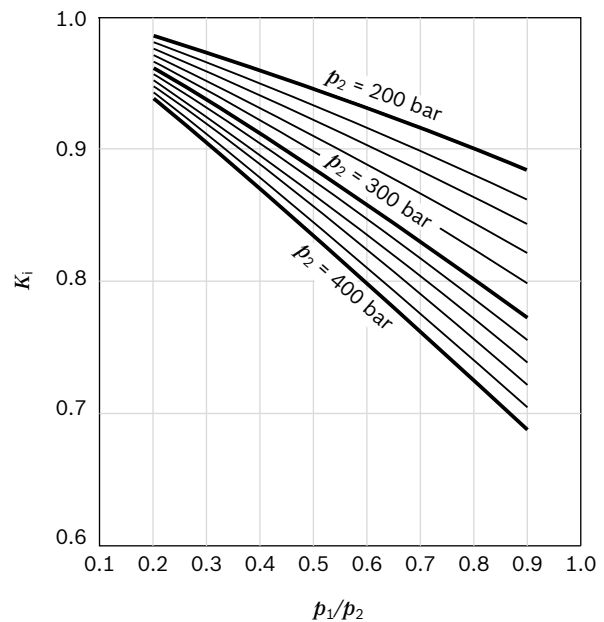
Equations (4.1) and (4.2) only apply for ideal gases. In the behavior of real gases, however, considerable deviations occur at operating pressures over 200 bar that must be taken into account by correction factors. These can be found in the following diagrams. The correction factors by which the ideal discharge volume ΔV should be multiplied are in a range from 0.6 to 1.

Application of calculation diagrams

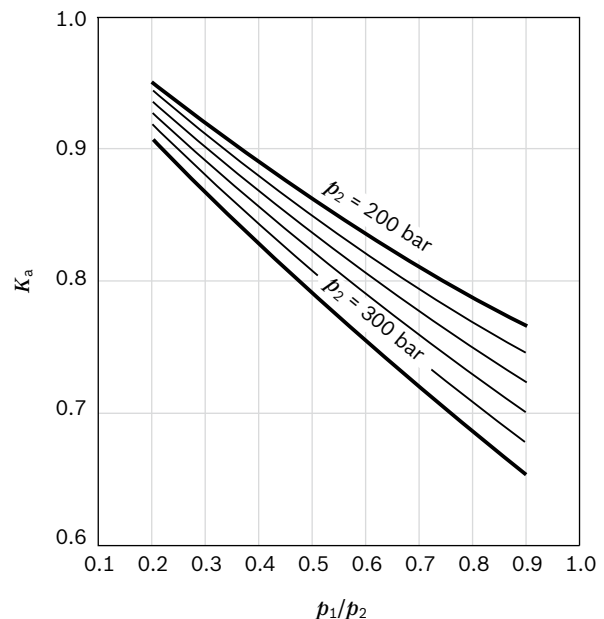
(see pages 8 to 9)



▼ Isothermal $\Delta V_{\text{real}} = \Delta V_{\text{ideal}} \times K_i$

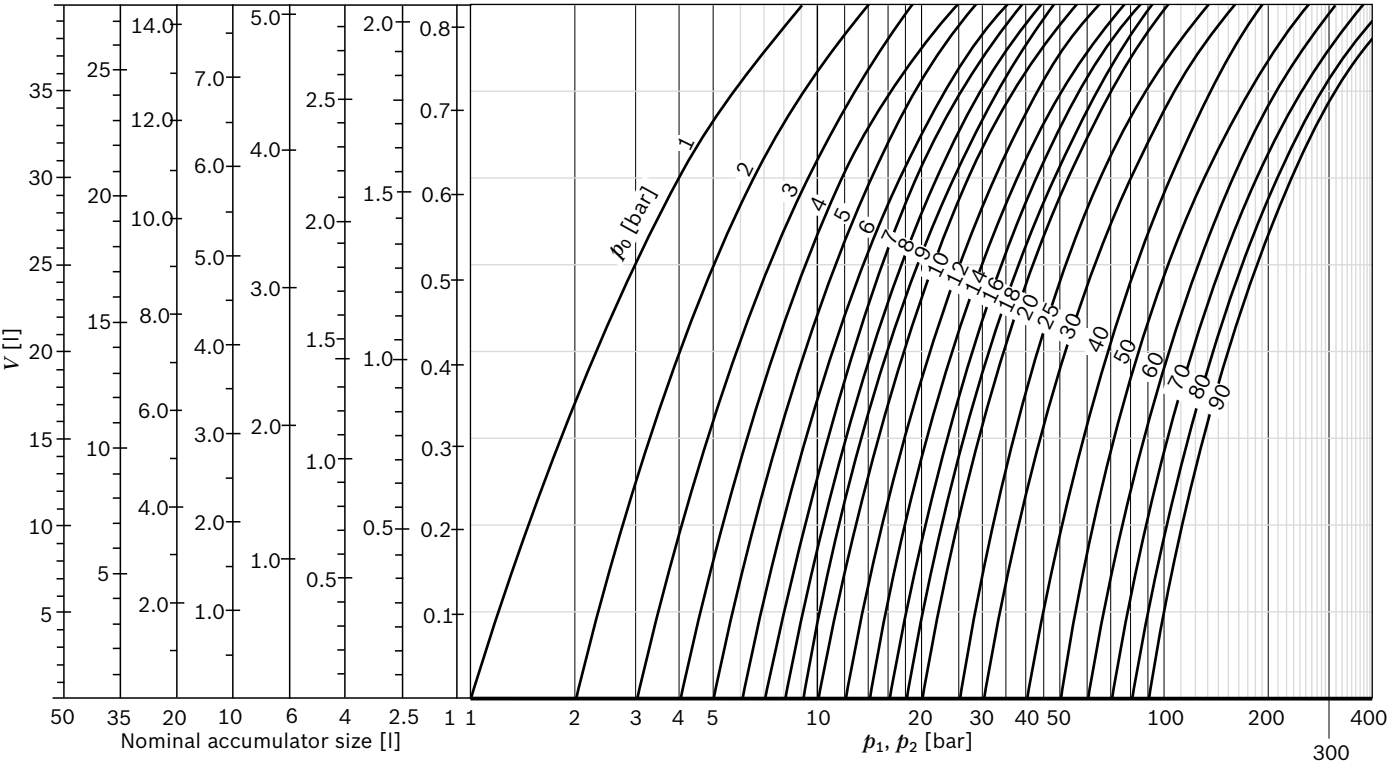


▼ Adiabatic $\Delta V_{\text{real}} = \Delta V_{\text{ideal}} \times K_a$

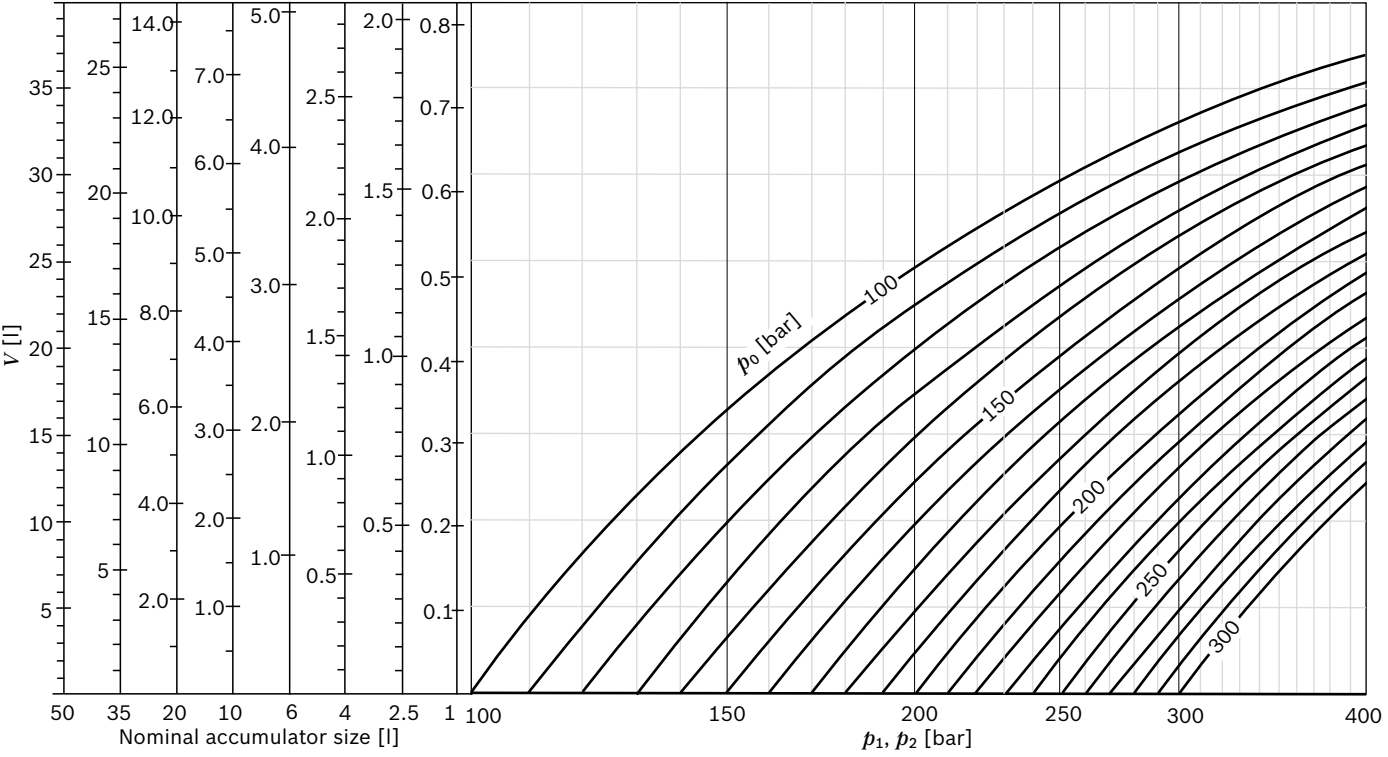


Isothermal state changes

▼ $p_0 = 1 \text{ to } 90 \text{ bar}$

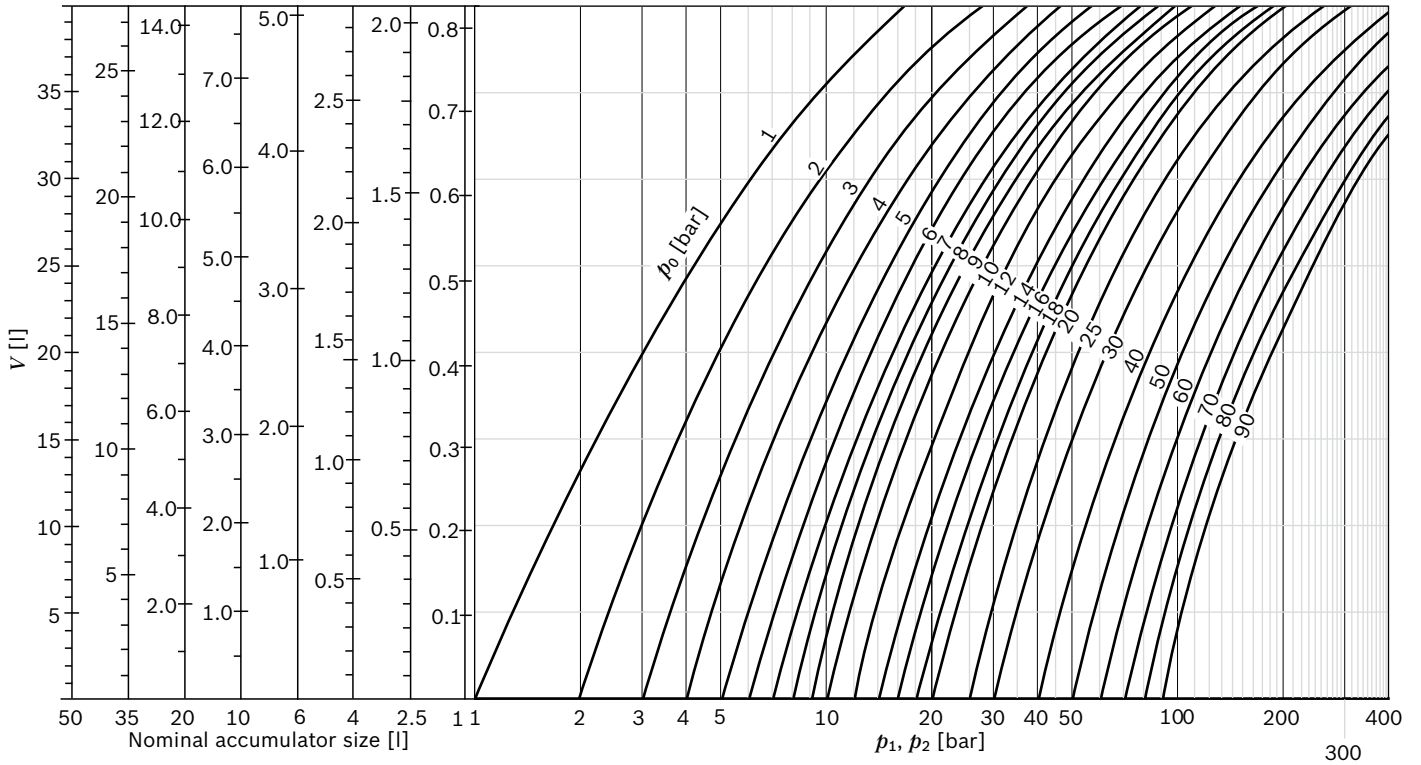


▼ $p_0 = 100 \text{ to } 300 \text{ bar}$

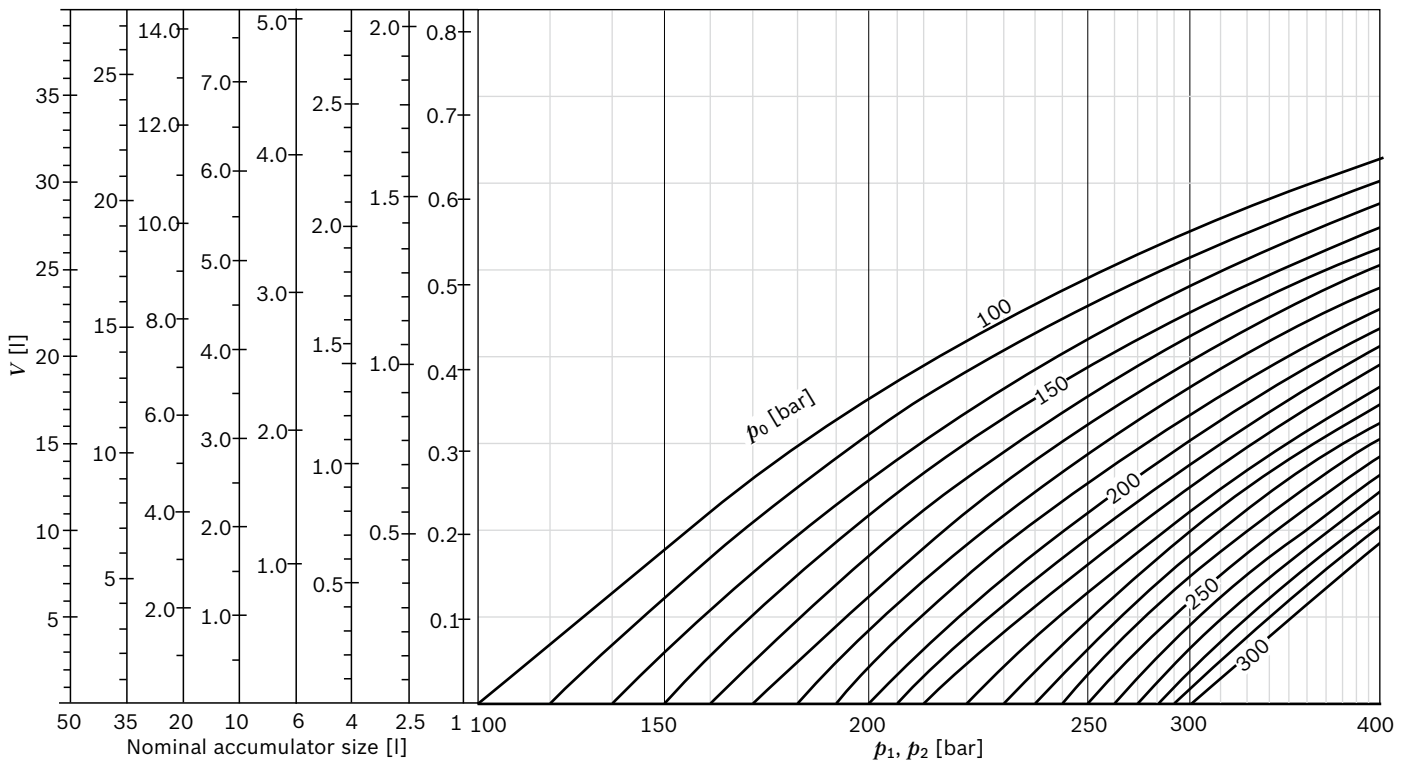


Adiabatic state changes

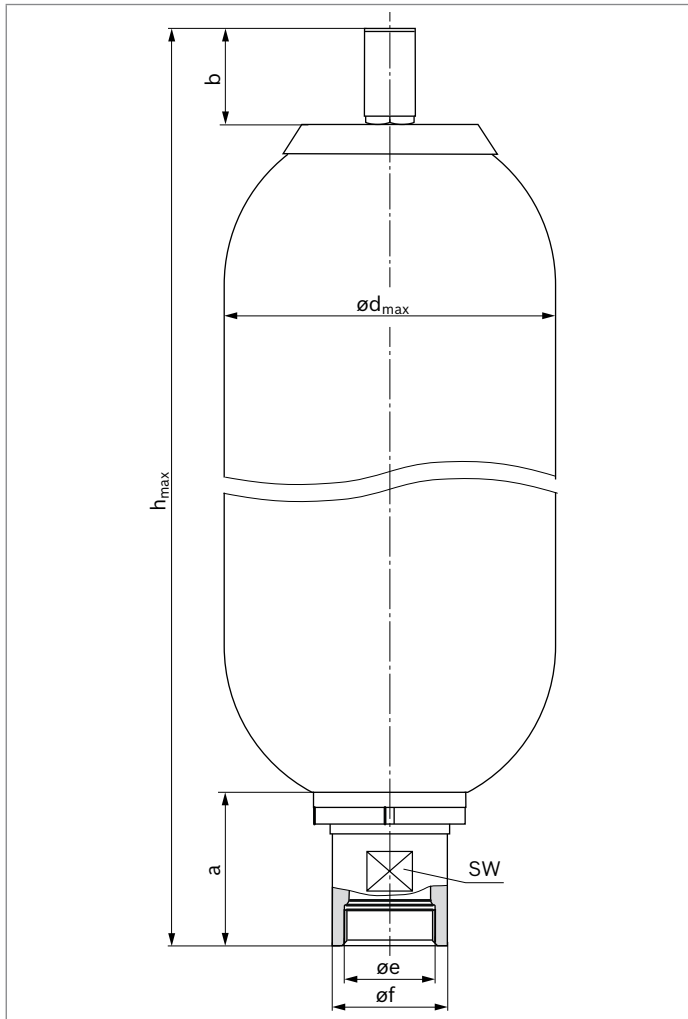
▼ $p_0 = 1$ to 90 bar



▼ $p_0 = 100$ to 300 bar



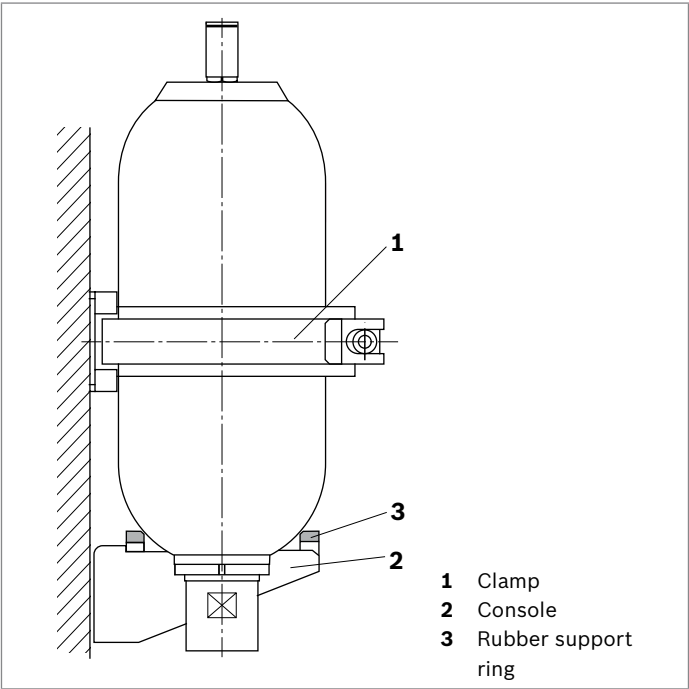
Dimensions



Nominal volume [l]	Order data / type	Material number	h_{max}	$\varnothing d_{max}$	a	b	$\varnothing e$	$\varnothing f$	SW	Weight [kg]
1	HAB1-350-4X/2G05G-2N111-BA	R901195131	333.5	115.5	56	70	G3/4"	36	32	5
	HAB1-350-4X/2G05G-2N111-GOST	R901326058								
2,5	HAB2.5-350-4X/2G07G-2N111-CE	R901195133	554	115.5	69	70	G1/14"	53	50	10
	HAB2.5-350-4X/2G07G-2N111-GOST	R901326059								
4	HAB4-350-4X/2G07G-2N111-CE	R901195135	438.5	170	67	70	G1/14"	53	50	16
	HAB4-350-4X/2G07G-2E111-CE	R901195136								
	HAB4-350-4X/2G07G-2N111-GOST	R901326060								
6	HAB6-350-4X/2G07G-2N111-CE	R901195137	564.5	170	67	70	G1/14"	53	50	20
	HAB6-350-4X/2G07G-2N111-GOST	R901326061								
10	HAB10-330-4X/2G09G-2N111-CE	R901195139	590.5	225.5	104	70	G2"	76	70	32
	HAB10-330-4X/2G09G-2E111-CE	R901195140								
	HAB10-330-4X/2G09G-2N111-GOST	R901326062								
20	HAB20-330-4X/2G09G-2N111-CE	R901195141	900.5	225.5	104	70	G2"	76	70	53
	HAB20-330-4X/2G09G-2N111-GOST	R901326063								
35	HAB35-330-4X/2G09G-2N111-CE	R901195143	1424	225.5	104	70	G2"	76	70	85
	HAB35-330-4X/2G09G-2N111-GOST	R901326064								
50	HAB50-330-4X/2G09G-2N111-CE	R901195145	1940	225.5	104	70	G2"	76	70	123
	HAB50-330-4X/2G09G-2N111-GOST	R901326065								

Spare parts and accessories

HAB mounting elements

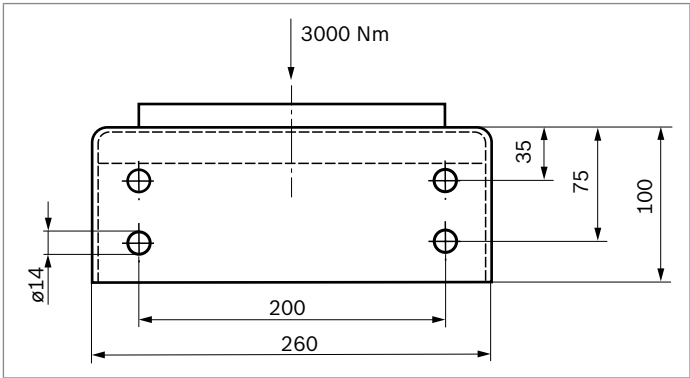


Clamp type	Material number	Nominal accumulator size				
		1	4	20		
		2,5	6	10	35	50
Clamp 110-120	1531316021	1				
Clamp 160-170	1531316022	2				
Clamp 218-228	1531316026			1	2	
Clamp 224-230	1531316005					2
Console	1531334008			1	1	1
Rubber support ring	1530221042			1	1	1

Console and rubber support ring

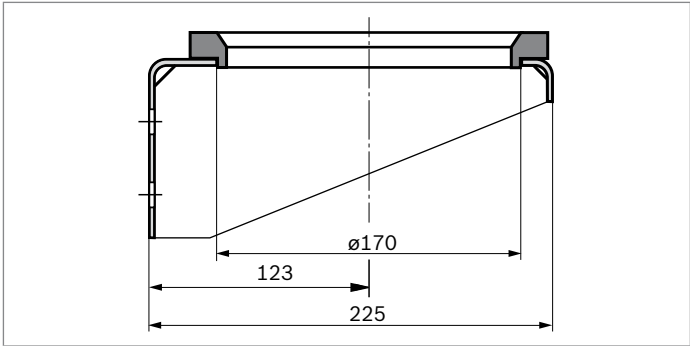
▼ Console

Material number 1531334008



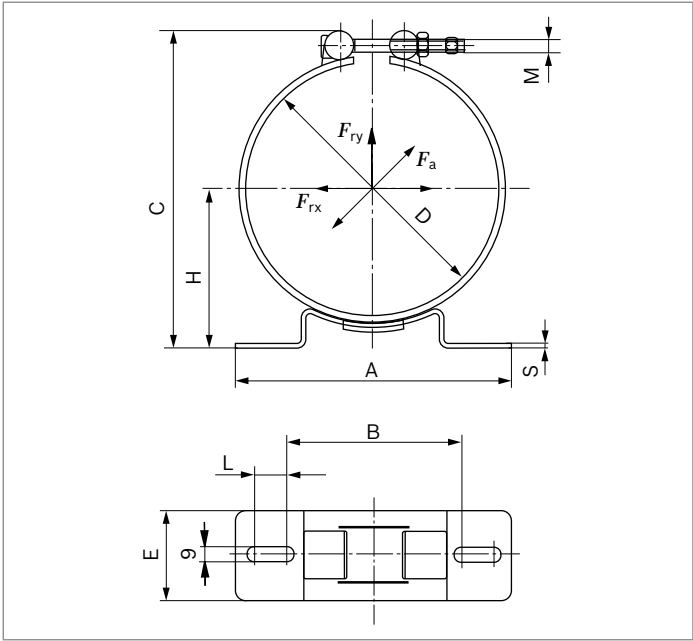
▼ Rubber support ring

Material number 1530221042

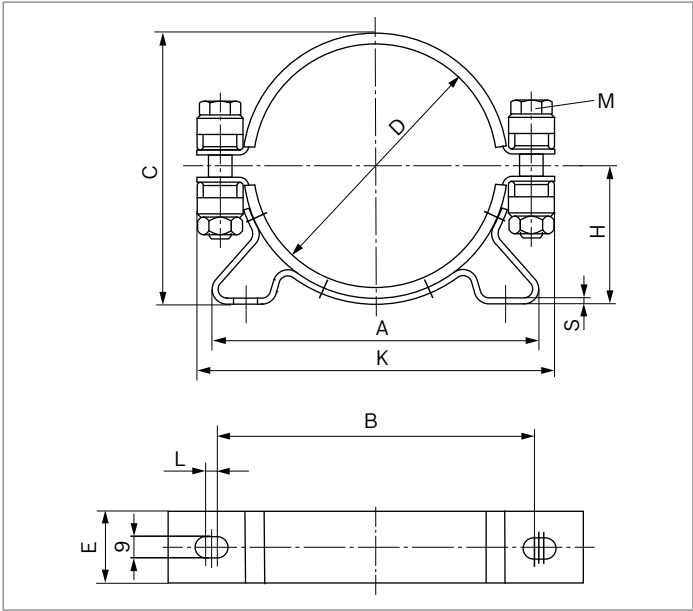


Securing clamps

▼ Type F1



▼ Type F2



Clamp type		Dimensions										Material number
		A	B	C	D	E	H	K	L	M	S	
Clamp 110-120	F1	135	96	150	110-120	50	64-69	–	6	M8	3	1531316021
Clamp 160-170	F1	237	147	200	160-170	50	90-95	–	35	M8	4	1531316022
Clamp 218-228	F1	237	147	258	218-228	50	120-125	–	35	M8	4	1531316026
Clamp 224-230	F2	254	212	244	224-230	30	120-123	295	4	M12	3	1531316005

Filling and testing device

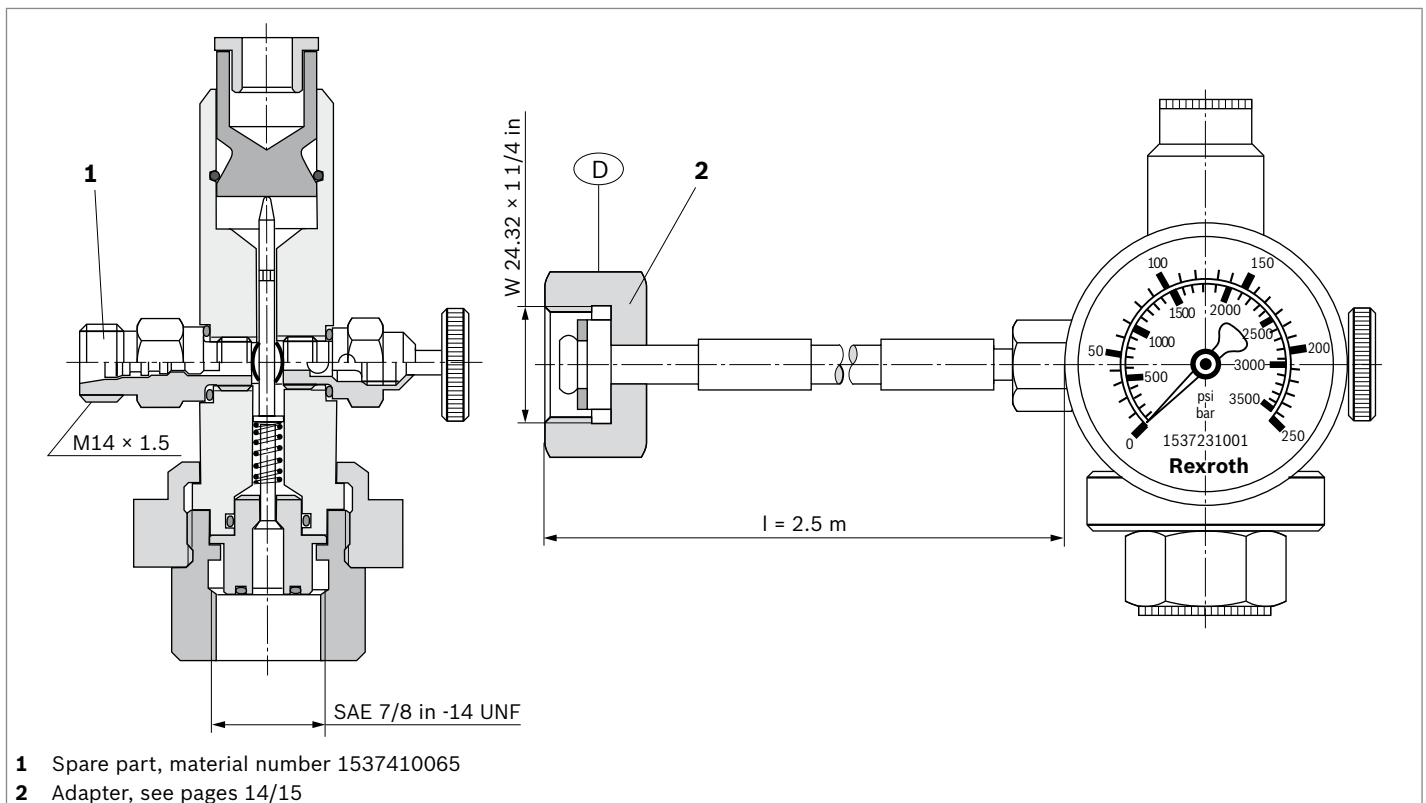


Measurement set	Material number
Measurement set, complete (for bladder-type accumulator HAB)	0538103011
Consists of	
Case (without contents)	R901070141
Filling and testing valve	0538103005
Pressure gauge (0 to 250 bar)	1537231001
Hose l = 2.5 m with connection fittings	D 1530712005

Additional parts to be ordered separately		Material number
Pressure gauge (0 to 25 bar)		R900033955
Pressure gauge (0 to 60 bar)		1537231002
Pressure gauge (0 to 400 bar)		1537231005
Connection fittings	F	1533391010
	GB	1533391011
	USA	1533391012
	KR	1533391013
	J	1533391014
	RUS	1533391015
Hose l = 5 m with connection fittings	D	1530712006

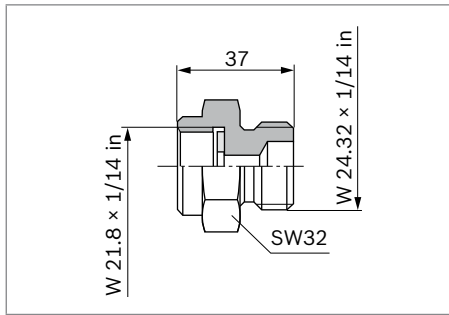
Dimensions of filling and testing valve

1 Valve body with check valve, release valve, pressure gauge port and gas hose port.

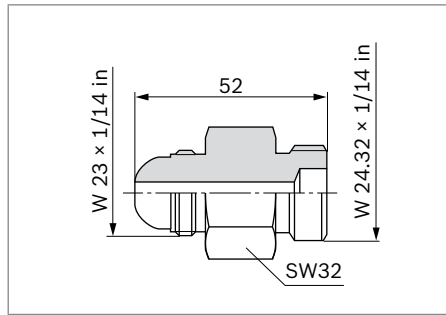


Adapter for nitrogen bottle to union nut

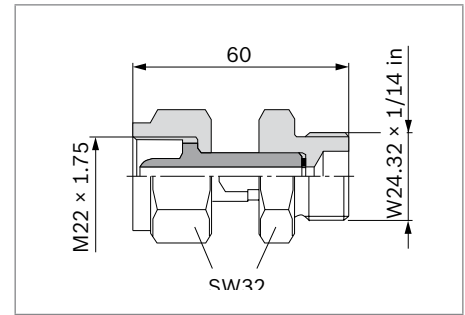
▼ **1533391010**



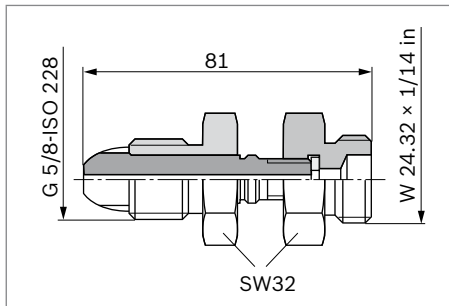
▼ **1533391013**



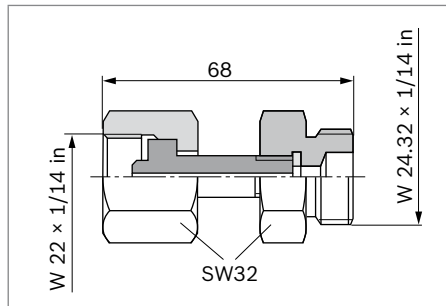
▼ **R900034782**



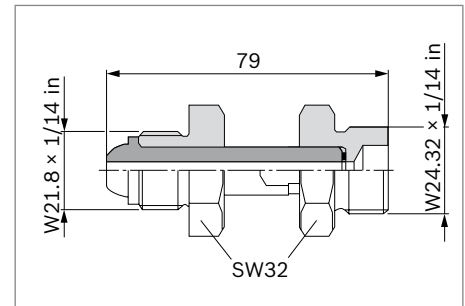
▼ **1533391011**



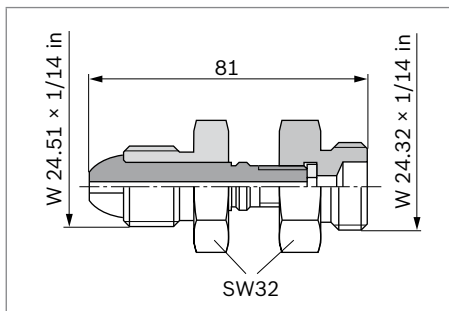
▼ **1533391014**



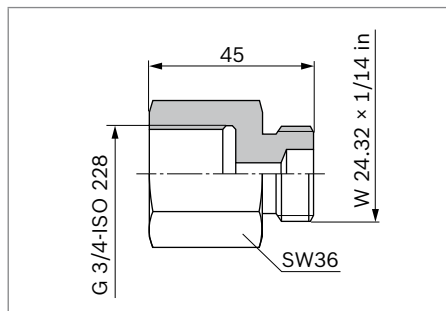
▼ **R900708208**



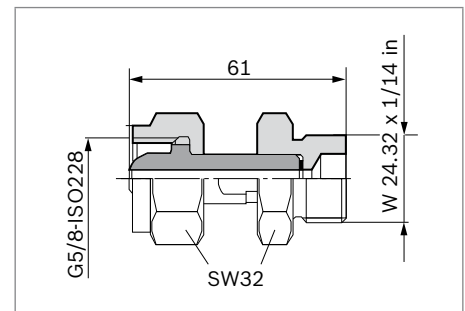
▼ **1533391012**



▼ **1533391015**



▼ **R901070776**



Country	1533391010	1533391011	1533391012	1533391013	1533391014	1533391015	R900034782	R900708208	R901070776
Brazil		x							
Bulgaria		x							
China									x
France	x								
Greece		x							
United Kingdom		x							
India		x							
Italy								x	
Japan					x				
Canada			x						
North Korea				x					
South Korea				x					
Malaysia		x							
Mexico	x								
Romania	x								
Russia						x			
Spain		x							
Saudi Arabia	x								
Singapore		x							
Taiwan							x		
Turkey		x							
USA			x						

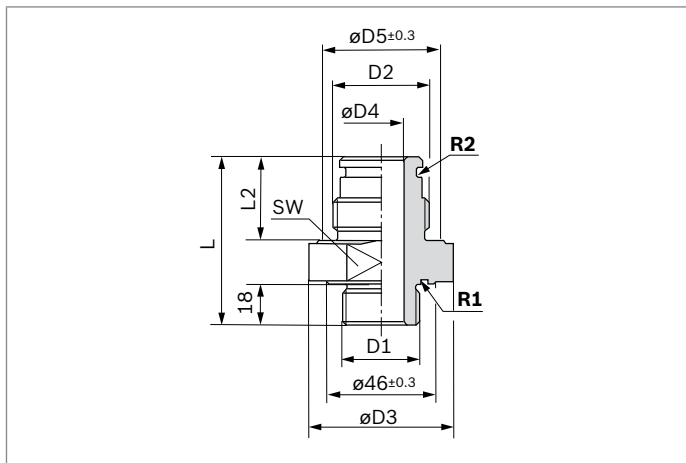
Other countries on request

Accumulator adapter for accumulator shut-off blocks type ABZSS

Please select the type required in accordance with data sheet 50131.

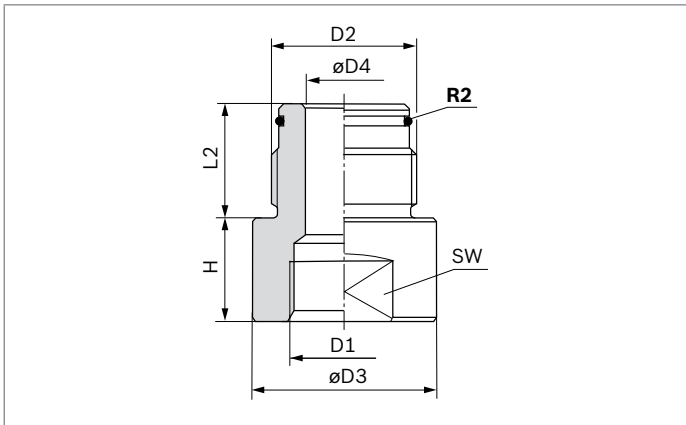
▼ Connection fitting for accumulator shut-off blocks

NG20/DN20 type 0532VAW in accordance with data sheet 50128



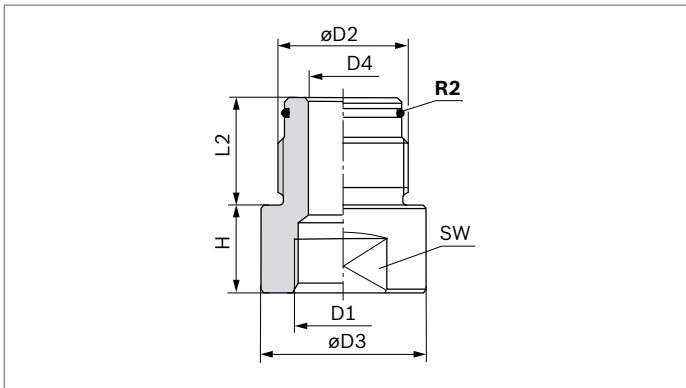
Safety block		acc. to ISO 228		Dimensions [mm]						Material number	Part number
D1	M _A [Nm]	D2	M _A [Nm]	L	L2	øD3	øD4	øD5	SW	socket piece	complete with seals R1 and R2
M33 × 2	310 ⁺³⁰	G3/4	180 ⁺¹⁸	64	28	53	12	42	46	1533359038	R901252857
		G1/14	450 ⁺⁴⁵	74	37	63	20	55	55	1533359039	R901252859
		G2	500 ⁺⁵⁰	85	44	90	30	75	80	1533359040	R901252860

▼ **Connection fitting, inch to metric thread**
HAB..-1X to HAB..-4X



Nominal volume [l]	acc. to ISO 228		acc. to ISO 228		Dimensions [mm]					Material number socket piece	Part number complete with seal R2
	D2	M_A [Nm]	D1	M_A [Nm]	H	L2	øD3	øD4	SW		
1	G3/4	180 ⁺¹⁸	M30 × 1.5	180 ⁺¹⁸	32	28	46	12	41	1533345047	R901252863
2,5 to 6	G1/14	450 ⁺⁴⁵	M40 × 1.5	400 ⁺⁴⁰	43	37	60	20	55	1533345048	R901252864
10 to 50	G2	500 ⁺⁵⁰	M50 × 1.5	450 ⁺⁴⁵	41	44	78	32	70	1533345049	R901252865

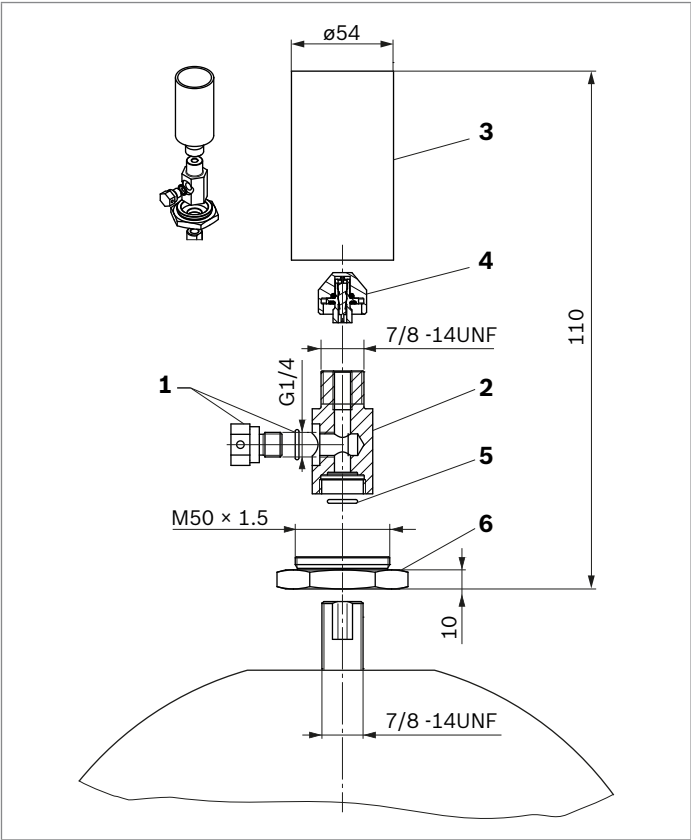
▼ **Reducing nipple for pipe connection**



Nominal volume [l]	acc. to ISO 228		acc. to ISO 228		Dimensions [mm]					Material number socket piece	Part number complete with seal R2
	D2	M_A [Nm]	D1	M_A [Nm]	H	L2	øD3	øD4	SW		
1	G3/4	180 ⁺¹⁸	G3/8	70 ⁺⁷	8	28	38	12	32	1533345039	R901252880
2,5 to 6	G1/14	450 ⁺⁴⁵	G1/2	115 ⁺¹²	8	37	60	24	55	1533345043	R901252884
	G1/14	450 ⁺⁴⁵	G3/4	180 ⁺¹⁸	8	37	60	24	55	1533345040	R901252881
10 to 50	G2	500 ⁺⁵⁰	G1/2	115 ⁺¹²	20	44	75	30	65	1533345044	R901252885
	G2	500 ⁺⁵⁰	G3/4	180 ⁺¹⁸	20	44	75	30	65	1533345041	R901252882
	G2	500 ⁺⁵⁰	G1	310 ⁺³¹	20	44	75	30	65	1533345045	1533345045
	G2	500 ⁺⁵⁰	G1 1/2	450 ⁺⁴⁵	40	44	75	32	65	1533345042	R901252883

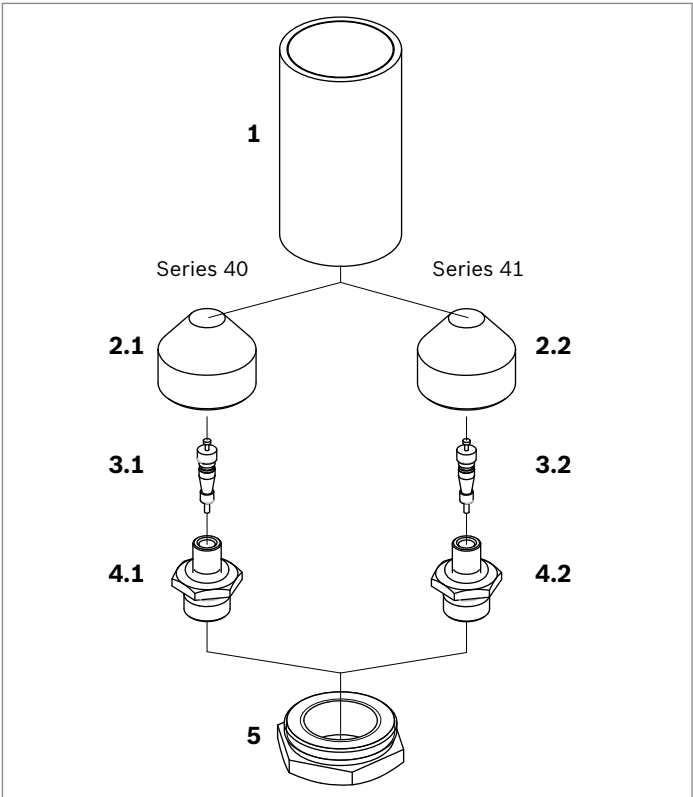
Pressure safeguarding

Pressure protection kit		R901346650
Consists of		Quantity
1	Bursting disk, 360 bar	1
2	Adapter	1
3	Protection cap	1
4	O-ring	2
5	Adapter nut (1 to 32 l)	1



Gas valves

Gas valve spare parts kit		R901337986
Consists of		Quantity
1	Protection cap	1
2.1	Sealing cap, series 40	1
3.1	Valve insert, series 40	1
4.1	Gas valve, series 40	1
2.2	Sealing cap, series 41	1
3.2	Valve insert, series 41	1
4.2	Gas valve, series 41	1
5	Nut	1



Spare parts

	10 Spare bladder with gas valve 41 and seal set		30 Oil valve kit consisting of retaining ring and oil valve	40 Retaining ring
Accumulator size	NBR	ECO		
1 liter	R901242645	–	–	R901274563
2.5 liters	R901242646	–	–	R901274564
4 liters	R901242647	R901255152	R901274540	R901274565
6 liters	R901242648	–	R901274540	R901274565
10 liters	R901242649	R901255154	R901274541	R901274566
20 liters	R901242650	–	R901274541	R901274566
35 liters	R901242651	–	R901274541	R901274566
50 liters	R901242652	–	R901274541	R901274566

The diagram illustrates the assembly of a bladder-type accumulator. The main components shown in the exploded view are the accumulator body, the gas valve assembly (labeled 10), the oil valve kit (labeled 30), and the retaining ring (labeled 40). Detailed cross-sections of the gas valve for Series 41 and Series 40 are provided, showing internal components like the O-ring (1), support ring (2), and O-ring (3). Dimensions and part numbers for the gas valve are also listed.

Accu- mulator frame size	Item 1 O-ring	Item 2 Support ring	Item 3 O-ring	Item 4 O-ring	Item 5 ED12	Item 5a O-ring
1 liter	ø36.1×3.5	–	ø16.9×2.7	ø7×2.5	ED12×1.5	ø10.82×1.78
2.5 to 5 liters	ø55×3.5	–	ø30×3	ø7×2.5	ED12×1.5	ø10.82×1.78
4 to 10 liters	ø55×3.5	ø55×61×1.4	ø30×3	ø7×2.5	ED12×1.5	ø10.82×1.78
10 to 50 liters	ø78.74×5.33	ø80×89×1.7	ø48×3	ø7×2.5	ED12×1.5	ø10.82×1.78

Intended use

Rexroth bladder-type accumulators HAB..-4X are designed for installation in hydraulic drive systems in stationary machines and systems.

In mobile application or application in which acceleration forces act on the bladder-type accumulator during intended operation, use is only permitted with the prior approval of the responsible Bosch Rexroth product manager. Please contact the Technical Sales department.

Rexroth bladder-type accumulators HAB..-4X are not intended for private use.

Note!

They must not be used in explosive environments in accordance with directive 94/9/EC (ATEX).

Safety instructions on hydraulic accumulators

For hydraulic accumulators, compliance with the specifications valid at the place of installation must be ensured before commissioning and during operation.

The operator bears the sole responsibility for compliance with all applicable specifications.

General instructions for hydraulic accumulators in hydraulic systems are provided by DIN EN ISO 4413.

Documents provided must be kept in a safe place. They will be needed by experts conducting regular examinations.

Warning!

Do not perform any welding, soldering or mechanical work on the accumulator vessel.

- Risk of explosion during welding or soldering work!
- Risk of bursting and loss of operating license in the event of mechanical processing!

Do not charge the hydraulic accumulator with oxygen or air. Risk of explosion!

Depressurize prior to working on hydraulic systems and protect against switching back on.

Serious accidents may be caused by incorrect installation. Commissioning may only be performed by qualified specialist personnel.

Legal regulations

Hydraulic accumulators are pressure vessels and are subject to the national specifications and regulations applicable at the place of installation.

In Germany the Ordinance on Industrial Safety and Health (BetrSichV) applies.

Special stipulations are to be observed in shipbuilding, aircraft construction, mining, etc.

Equipment is designed, manufactured and tested in accordance with the appendices of EN 14359. Installation, fitting and operation are governed by the "Technical Regulations for Pressure Vessels".

Note!

All vessel classes shall be protected by a pressure-relief valve according to directive 97/23/EG.

Qualified persons

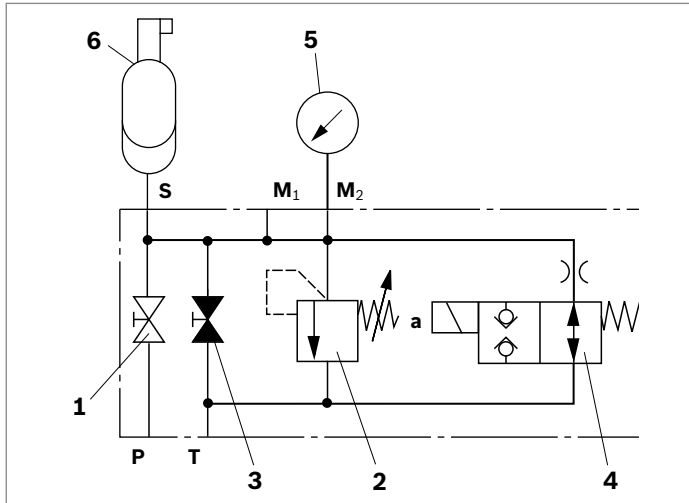
In accordance with the German Ordinance on Industrial Safety and Health (BetrSichV), examinations may only be performed by qualified persons.

Qualified persons are persons who have acquired the necessary specialist knowledge on account of their vocational training, professional experience and recent professional activities.

Safety devices

In accordance with the “Technical Regulations for Pressure Accumulators” (TRB), additional safety equipment is necessary. The safety devices are summarized in the compact Bosch Rexroth accumulator safety block:

- Type ABZSS in accordance with data sheet 50131
- Type 0532VAW in accordance with data sheet 50128



- 1 System shut-off cock
- 2 Pressure relief valve
- 3 Manual unloading
- 4 Electro-magnetic unloading, optional
- 5 Pressure measurement device
- 6 Safety device against excessive temperatures

- M₁; M₂** Measuring port
- P** Pump connection
- S** Accumulator port
- T** Tank port

Bosch Rexroth AG

Hydraulics
Zum Eisengießer 1
97816 Lohr am Main, Germany
Phone +49 (0) 93 52 / 18-0
Fax +49 (0) 93 52 / 18-23 58
documentation@boschrexroth.de
www.boschrexroth.de

© This document, as well as the data, specifications and other information set forth in it, are the exclusive property of Bosch Rexroth AG. It may not be reproduced or given to third parties without its consent. The data specified above only serve to describe the product. No statements concerning a certain condition or suitability for a certain application can be derived from our information. The information given does not release the user from the obligation of own judgment and verification. It must be remembered that our products are subject to a natural process of wear and aging.