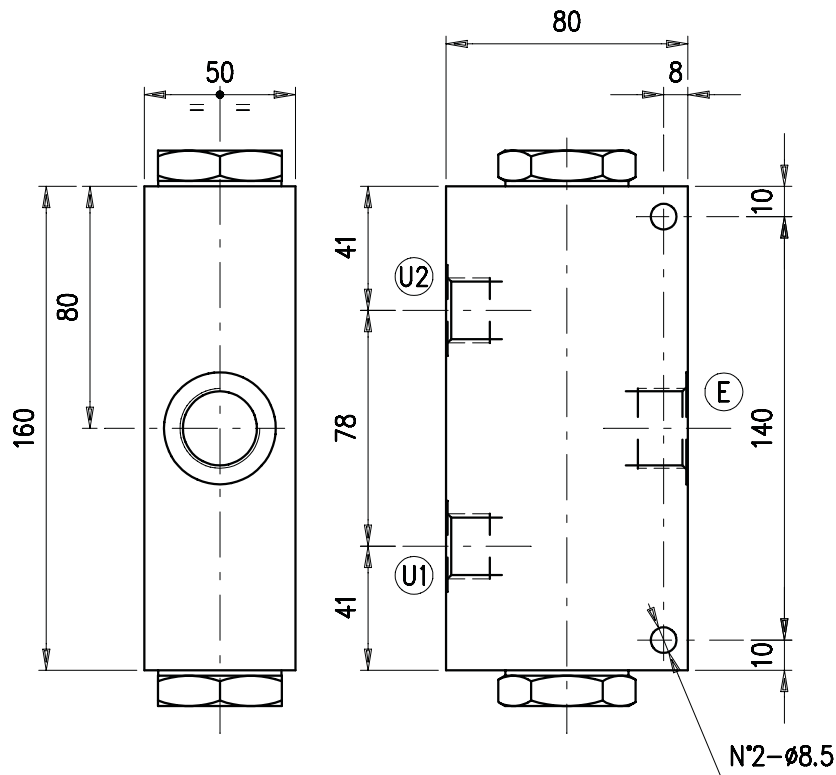
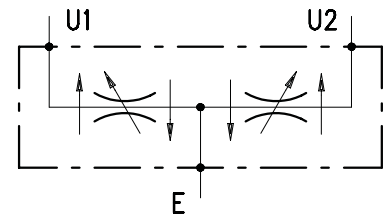


• **DIMENSIONS (mm)**

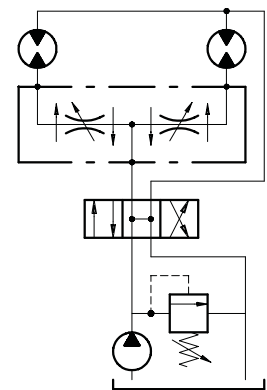


E	U1-U2
G 1"	G 3/4

• **HYDRAULIC DIAGRAM**



• **ASSEMBLY DIAGRAM**



• **DESCRIPTION**

Flow dividers/combiners, pressure compensated.

• **OPERATION**

The valve is designed to divide the incoming flow in E into two separate deliveries U1 and U2 depending on the valve divide ratio. Pressure variations in U1 and U2 do not alter the outlet delivery. In the opposite direction, the valve works combining together the inlet flows U1 and U2.

• **PERFORMANCE**

**Maximum flow:** 90-150 l/min.

**Maximum pressure:**

– aluminium body: 210 bar

– steel body: 350 bar

**Standard division ratio:**

– 50%-50% (standard)

– 33%-66% (on request)

– 40%-60% (on request)

**Maximum division error:**  $\pm 5\%$  of the oil flow in U1 or U2 and 120 bar pressure difference between U1 and U2. (Division rate 50%+50%).

**Working temperature:**

– Minimum -25°C max 90°C with standard BUNA N gaskets

– Minimum -20°C max 120°C with VITON gaskets on request

• **RECOMMENDATIONS**

**Fluid:** best use mineral oil with viscosity ranging between 10 and 200 cSt

**Filter:** see page Z.9000.000.

**Weight:**

– aluminium body 2.07 kg

– steel body 4.27 kg

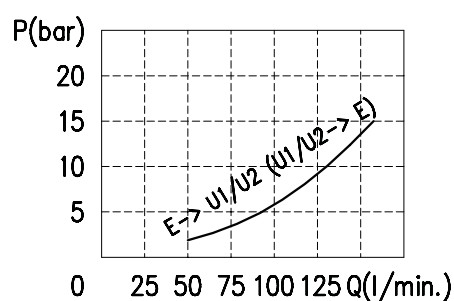
**Material:** internal components made out of high-grade steel duly treated and fabricated.

For more information please ask our technical office.

Variations and modifications of technical features and dimensions are reserved. **OLEOSTAR S.p.A.** also reserves the right to stop production of each and any model listed in the catalogue with no notice.

Copyrights on the text contained herein belong to **OLEOSTAR S.p.A.** . Partial and full reproductions or copies of this catalogue are forbidden.

## • RATING DIAGRAMS



Oil viscosity 46 cSt

## • CODE NUMBER

**VDFR 100-150 / □ / □**

Flow Division Ratio between  
U1 and U2 (%)

\_ standard division ratio 50 -50  
33 - 66  
40 - 60

Body material

\_ Aluminium  
**ac** Steel