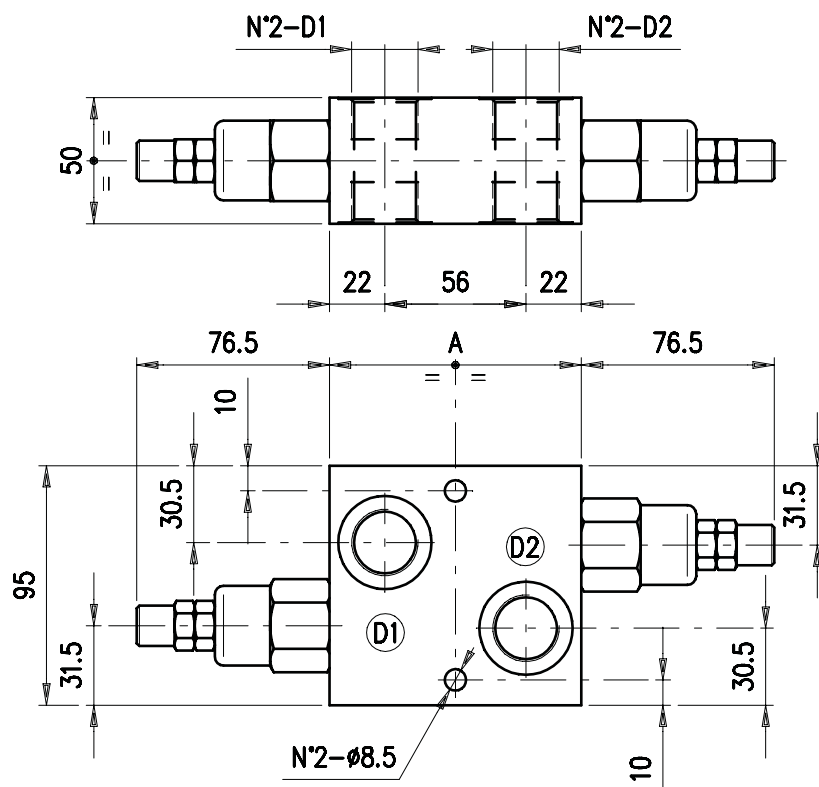


# **PRESSURE RELIEF VALVES** **VAIL 20 - □□**

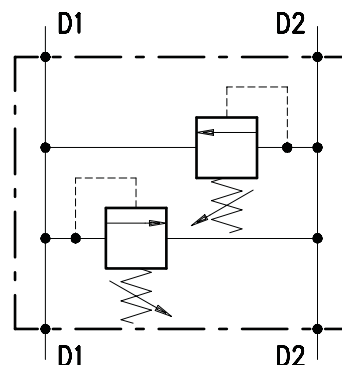


## • **DIMENSIONS (mm)**

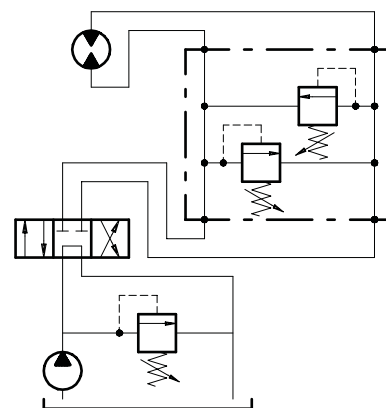


VAIL	A	D1	D2
20-34	100	G 3/4	G 3/4
20-100	120	G 1	G 1

## • **HYDRAULIC DIAGRAM**



## • **ASSEMBLY DIAGRAM**



## • **DESCRIPTION**

Dual cross-line relief valve. Direct acting, poppet type, line mounting.

## • **OPERATION**

Allows pressure relief on delivery pipes to engines and cylinders.  
 Actuator close mount is recommended to assure a more rapid valve action.

## • **PERFORMANCE**

**Maximum flow:**

- VAIL 20-34 = 100 l/min.
- VAIL 20-100 = 180 l/min.

**Maximum Pressure:** 350 bar

**Application range with standard springs:**

- 5 ÷ 40 bar (test setting: 30 bar at 5 l/min.)
- 20 ÷ 80 bar (test setting: 60 bar at 5 l/min.)
- 50 ÷ 220 bar (test setting: 160 bar at 5 l/min.)
- 180 ÷ 350 bar (test setting: 280 bar at 5 l/min.)

To perform setting of the valve see the pressure drop/ flow diagram.

**Hysteresis:** 85% of the valve setting for 1 L. flow capacity per minute.

**Working temperature:**

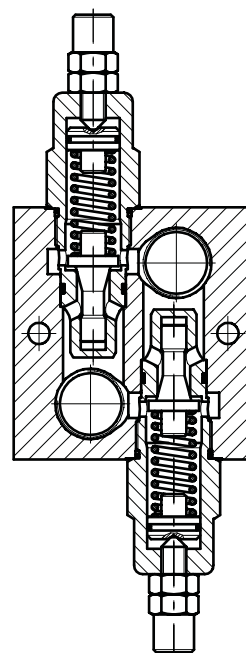
- min. -25°C max. 90°C with standard BUNA N gaskets
- min. -20°C max. 120°C with optional VITON gaskets

## • **RECOMMENDATIONS**

**Fluid:** best use mineral oil with viscosity ranging between 10 and 200 cSt.

**Filter:** see page Z.9000.000.

## • **CROSS SECTION**



**Weight:**

- aluminium valves 2.00 kg
- steel valves 3.55 kg

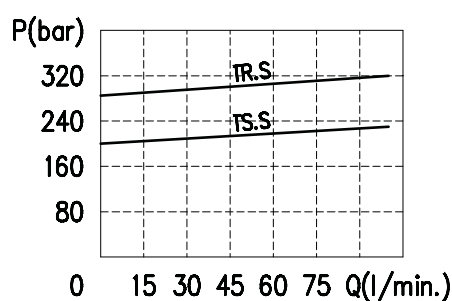
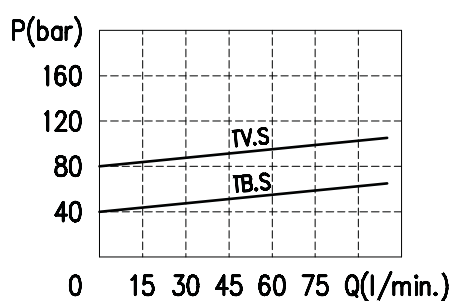
**Cartridge used:** see page 1.1000.300.

**Material:** internal components made out of high-grade steel duly treated and fabricated.

For more information please ask our technical office .

Variations and modifications of technical features and dimensions are reserved. **OLEOSTAR S.p.A.** also reserves the right to stop production of each and any model listed in the catalogue with no notice.

Copyrights on the text contained herein belong to **OLEOSTAR S.p.A.** . Partial and full reproductions or copies of this catalogue are forbidden.

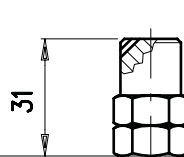
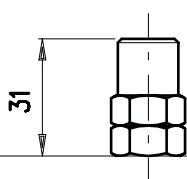
**• RATING DIAGRAMS**


Oil viscosity 46 cSt

**• ADJUSTMENTS**

S

W


**• CODE NUMBER**

VAIL 20 - □□ / □□ . □ / □□

Port size

34) 3/4" BSP  
100) 1" BSP

Pressure settings (bar)

TB) 5÷40  
TV) 20÷80  
TS) 50÷220  
TR) 180÷350

Adjustment

S  
W

Body material

\_ Aluminium  
ac Steel