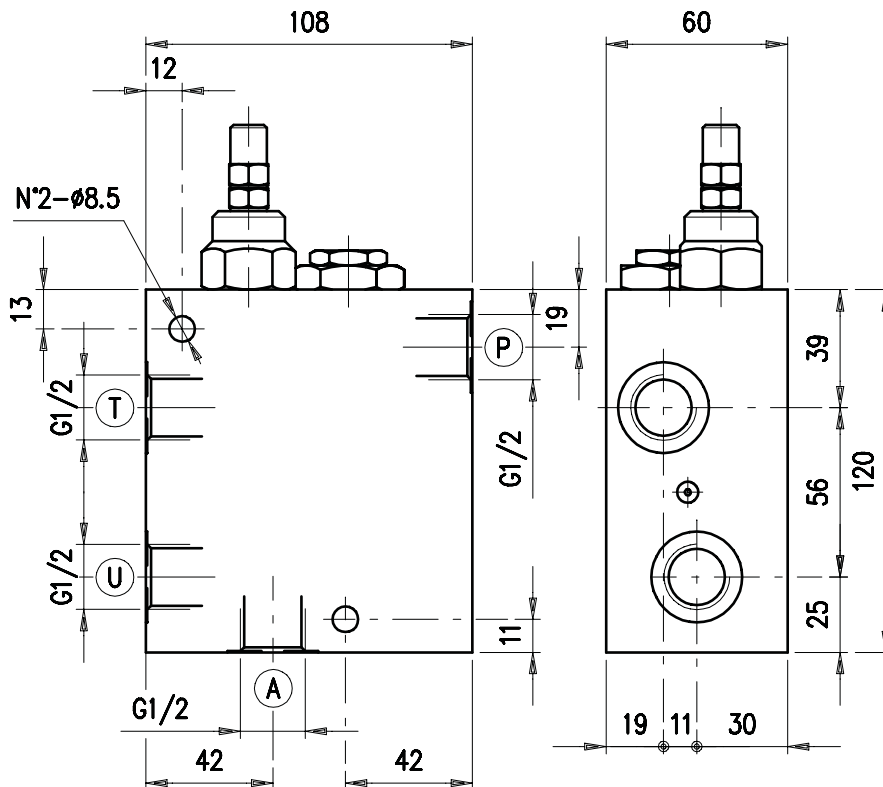
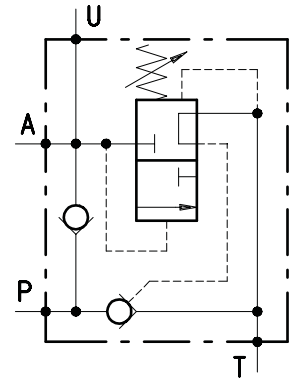


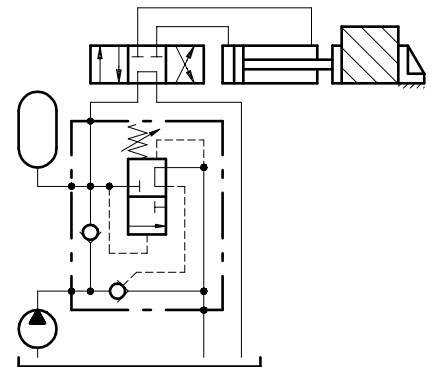
• **DIMENSIONS (mm)**



• **HYDRAULIC DIAGRAM**



• **ASSEMBLY DIAGRAM**



• **DESCRIPTION**

Automatic cut-off valve.

• **OPERATION**

Allows for pump discharge when the setting pressure is reached in U. Later the valve keeps constant pressure in U by means of the accumulator in A.

• **PERFORMANCE**

**Maximum flow:** 50 l/min.

**Maximum Pressure:** 250 bar (aluminium body).

**Application range with standard springs:**

- 5 ÷ 110 bar (test setting: 90 bar at 5 l/min.)
- 100 ÷ 250 bar (test setting: 200 bar at 5 l/min.)

To perform setting of the valve see the pressure drop / flow diagram.

**Connection Pressure:**

- 15% of the valve setting pressure for standard valves
- ask our technical office for special valves

**Working temperature:**

- min. -25°C max. 90°C with standard BUNA N gaskets
- min. -20°C max. 120°C with optional VITON gaskets

• **RECOMMENDATIONS**

**Fluid:** best use mineral oil with viscosity ranging between 10 and 200 cSt.

**Filter:** see page Z.9000.000.

**Weight:** 2.35 kg (aluminium body).

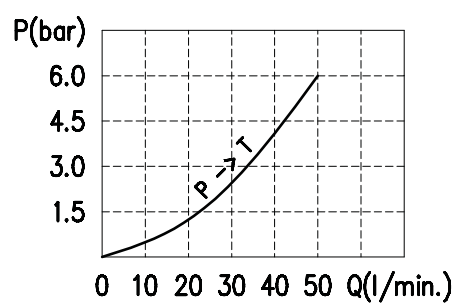
**Material:** internal components made out of high-grade steel duly treated and fabricated.

For more information please ask our technical office.

Variations and modifications of technical features and dimensions are reserved. **OLEOSTAR S.p.A.** also reserves the right to stop production of each and any model listed in the catalogue with no notice.

Copyrights on the text contained herein belong to **OLEOSTAR S.p.A.** . Partial and full reproductions or copies of this catalogue are forbidden.

## • RATING DIAGRAMS



Oil viscosity 46 cSt

## • CODE NUMBER

VDA 12 / □□ . S / □□

Pressure settings (bar)

TV) 5÷110  
TR) 100÷250

Body material

\_ Aluminium  
ac Steel