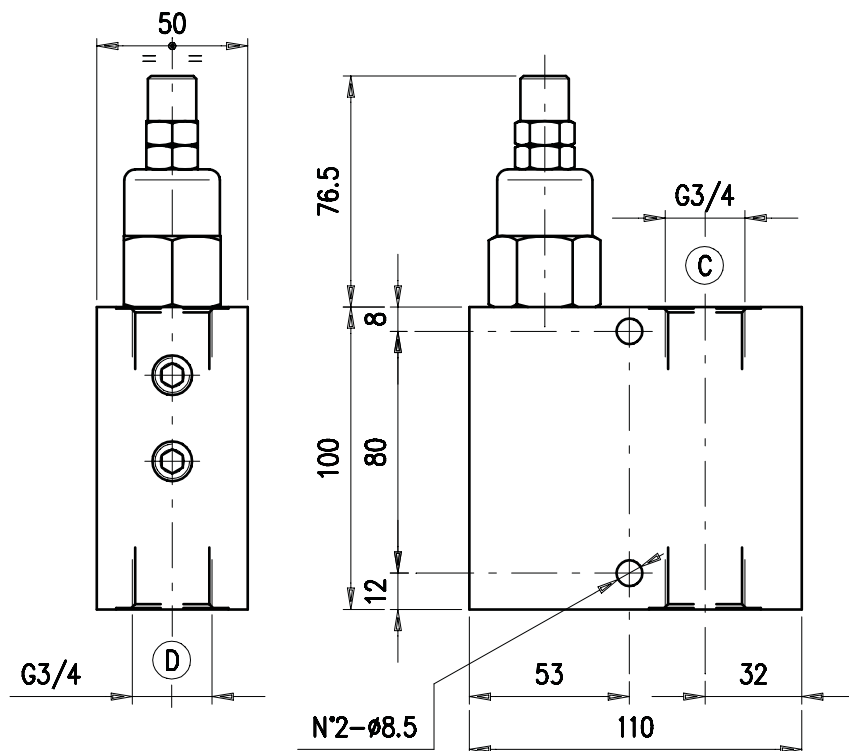
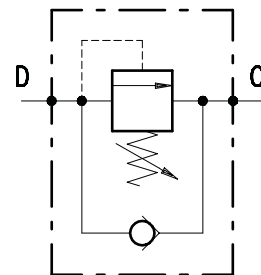


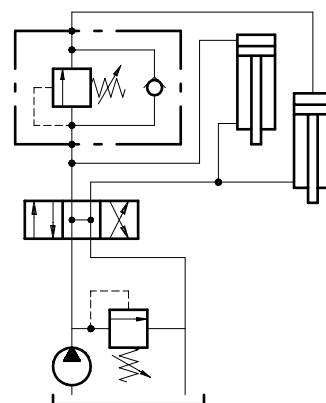
• **DIMENSIONS (mm)**



• **HYDRAULIC DIAGRAM**



• **ASSEMBLY DIAGRAM**



• **DESCRIPTION**

Direct control sequence valve.

• **OPERATION**

Allows for oil flow from D into C when the pressure in D achieves the spring setting value. Should back pressure arise in C, the valve opening pressure shall be same as the setting pressure plus the back pressure.

• **PERFORMANCE**

Maximum flow: 120 l/min.

Maximum Pressure:

- 210 bar (aluminium valve)
- 350 bar (steel valve)

Application range with standard springs:

- 5 ÷ 40 bar (test setting: 30 bar at 5 l/min.)
- 20 ÷ 80 bar (test setting: 60 bar at 5 l/min.)
- 50 ÷ 220 bar (test setting: 160 bar at 5 l/min.)
- 180 ÷ 350 bar (test setting: 280 bar at 5 l/min.)

To perform setting of the valve see the pressure drop/ flow diagram.

Working temperature:

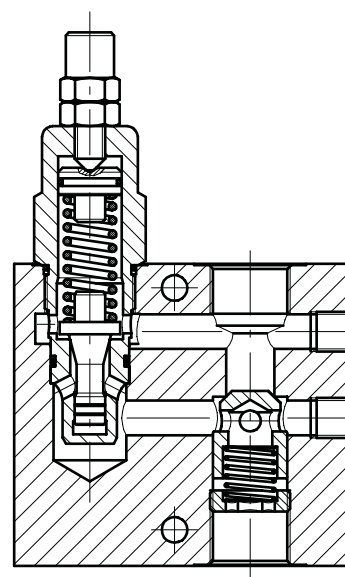
- min. -25°C max. 90°C with standard BUNA N gaskets
- min. -20°C max. 120°C with optional VITON gaskets

• **RECOMMENDATIONS**

Fluid: best use mineral oil with viscosity ranging between 10 and 200 cSt.

Filter: see page Z.9000.000.

• **CROSS SECTION**



Weight: 1.80 kg and 4.00 kg for aluminium and steel valves respectively.

Cartridge used: see page 1.1000.300.

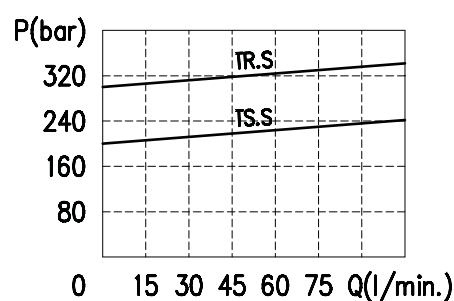
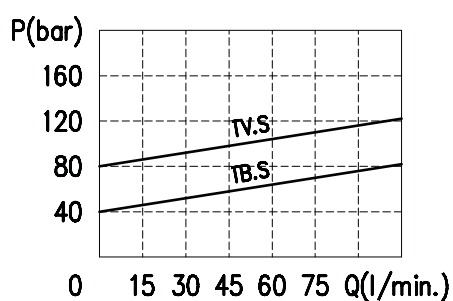
Material: internal components made out of high-grade steel duly treated and fabricated.

For more information please ask our technical office.

Variations and modifications of technical features and dimensions are reserved. **OLEOSTAR S.p.A.** also reserves the right to stop production of each and any model listed in the catalogue with no notice.

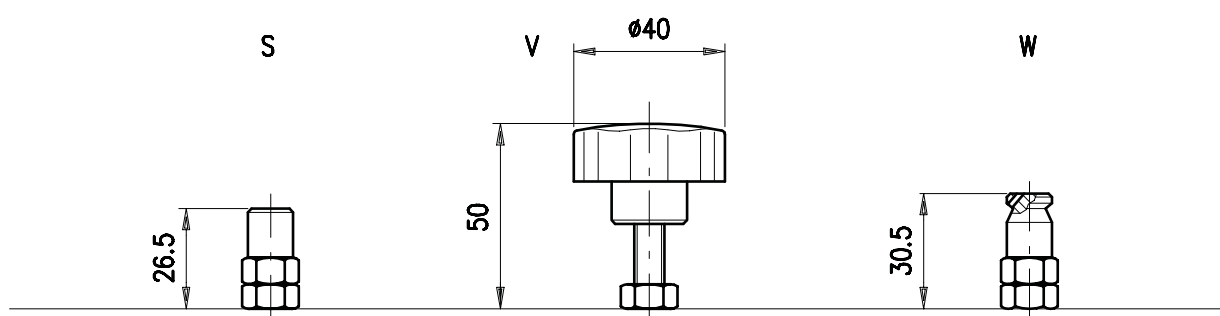
Copyrights on the text contained herein belong to **OLEOSTAR S.p.A.** . Partial and full reproductions or copies of this catalogue are forbidden.

• RATING DIAGRAMS



Oil viscosity 46 cSt

• ADJUSTMENTS



• CODE NUMBER

VDSRL 20 - 34 / □□ . □ / □□

