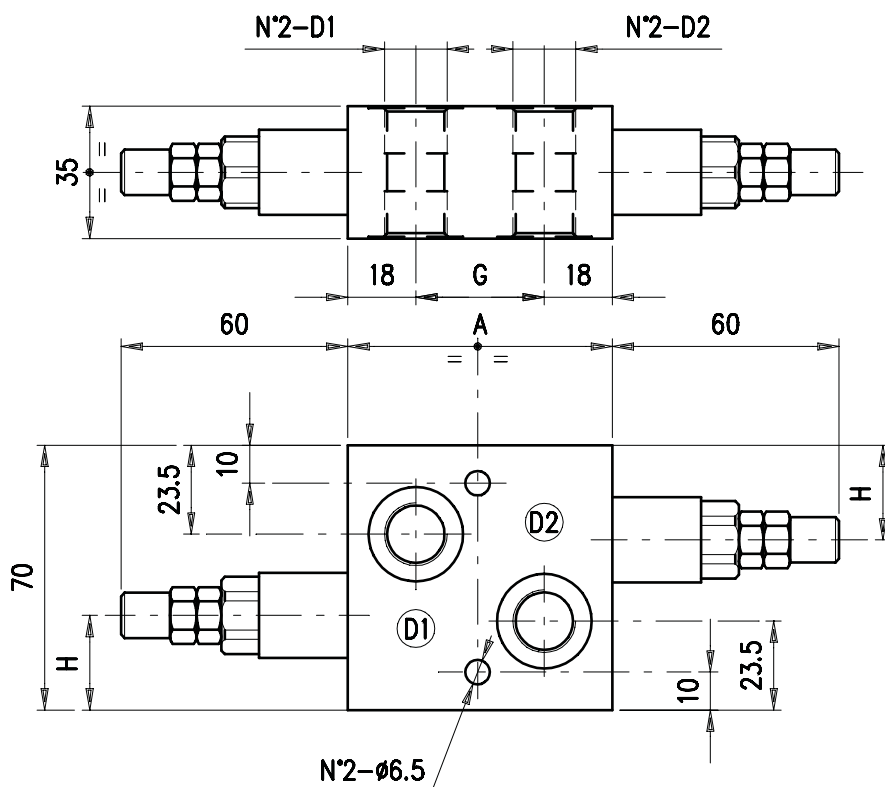


• **DIMENSIONS (mm)**



VAIL	A	G	H	D1	D2
5-38	70	34	25	G 3/8	G 3/8
5-12	75	39	24.5	G 1/2	G 1/2

• **DESCRIPTION**

Dual cross-line relief valve. Direct acting, poppet type, line mounting.

• **OPERATION**

Allows pressure relief on delivery pipes to engines and cylinders.
 Actuator close mount is recommended to assure a more rapid valve action.

• **PERFORMANCE**

Maximum flow:

- VAIL 5-38 = 25 l/min.
- VAIL 5-12 = 35 l/min.

Maximum Pressure:

- 210 bar (aluminium valves)
- 350 bar (steel valves)

Application range with standard springs:

- 5 ÷ 40 bar (test setting: 30 bar at 5 l/min.)
- 20 ÷ 80 bar (test setting: 60 bar at 5 l/min.)
- 50 ÷ 220 bar (test setting: 160 bar at 5 l/min.)
- 180 ÷ 350 bar (test setting: 250 bar at 5 l/min.)

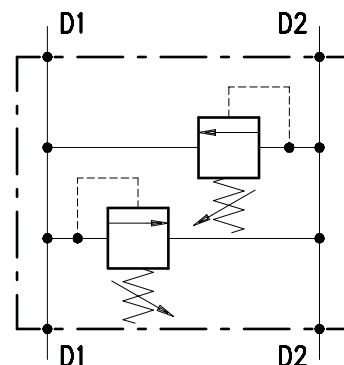
To perform setting of the valve see the pressure drop/ flow diagram.

Hysteresis: 85% of the valve setting for 1 L. flow capacity per minute.

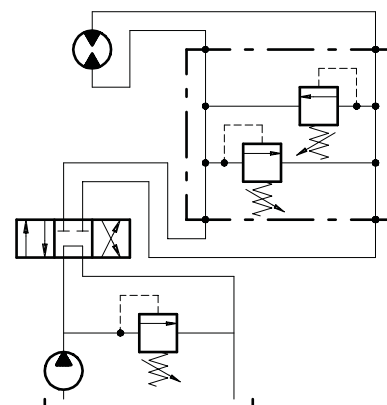
Working temperature:

- min. -25°C max. 90°C with standard BUNA N gaskets
- min. -20°C max. 120°C with optional VITON gaskets

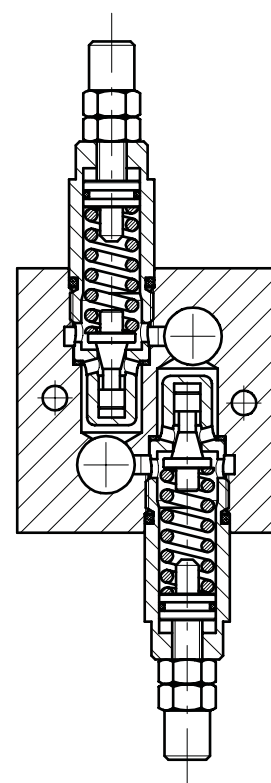
• **HYDRAULIC DIAGRAM**



• **ASSEMBLY DIAGRAM**



• **CROSS SECTION**



• RECOMMENDATIONS

Fluid: best use mineral oil with viscosity ranging between 10 and 200 cSt.

Filter: see page Z.9000.000.

Weight:

– 0.67 kg aluminium valves (VAIL 5-38 and VAIL 5-12)

– 1.29 kg steel valves (VAIL 5-38 and VAIL 5-12)

Cartridge used: see page 1.1000.100.

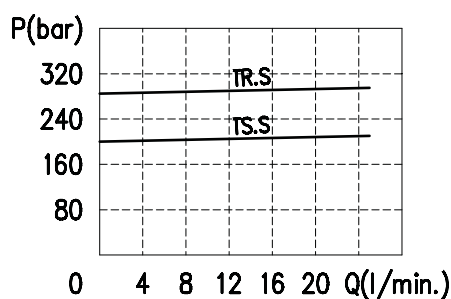
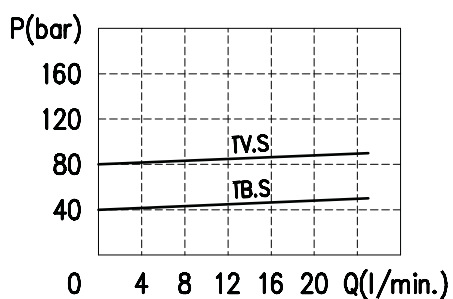
Material: internal components made out of high-grade steel duly treated and fabricated.

For more information please ask our technical office .

Variations and modifications of technical features and dimensions are reserved. **OLEOSTAR S.p.A.** also reserves the right to stop production of each and any model listed in the catalogue with no notice.

Copyrights on the text contained herein belong to **OLEOSTAR S.p.A.** . Partial and full reproductions or copies of this catalogue are forbidden.

• RATING DIAGRAMS

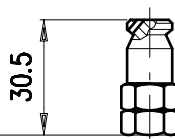
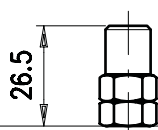


Oil viscosity 46 cSt

• ADJUSTMENTS

S

W



• CODE NUMBER

VAIL 5 - □□ / □□ . □ / □□

Port size

Pressure settings (bar)

Adjustment

Body material

38) 3/8" BSP
12) 1/2" BSP

TB) 5÷40
TV) 20÷80
TS) 50÷220
TR) 180÷350

S
W

_ Aluminium
ac Steel