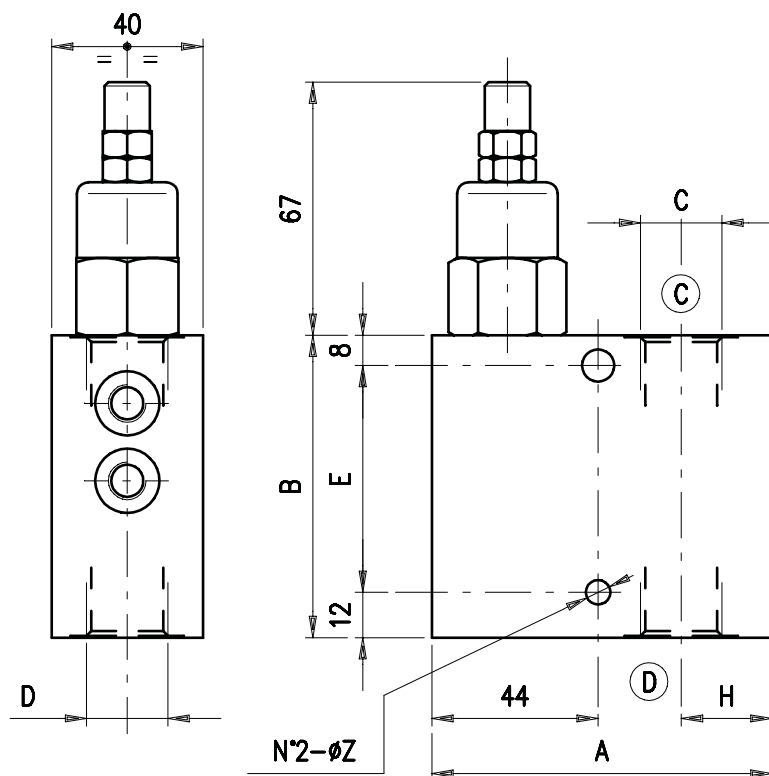
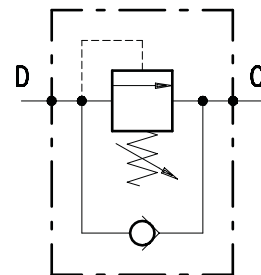


• **DIMENSIONS (mm)**

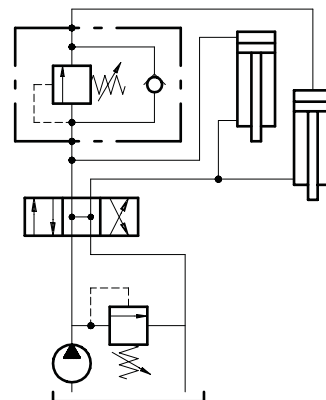


VDSRL	A	B	C	D	E	H	Z
10-12	90	80	G 1/2	G 1/2	60	24	8.5
10-34	95	90	G 3/4	G 3/4	70	27	8.5

• **HYDRAULIC DIAGRAM**



• **ASSEMBLY DIAGRAM**



• **DESCRIPTION**

Direct control sequence valve.

• **OPERATION**

Allows for oil flow from D into C when the pressure in D achieves the spring setting value. Should back pressure arise in C, the valve opening pressure shall be same as the setting pressure plus the back pressure.

• **PERFORMANCE**

Maximum flow:

- VDSRL 10-12=50 l/min.
- VDSRL 10-34=70 l/min.

Maximum Pressure:

- 210 bar (aluminium valve)
- 350 bar (steel valve)

Application range with standard springs:

- 5 ÷ 40 bar (test setting: 30 bar at 5 l/min.)
- 20 ÷ 80 bar (test setting: 60 bar at 5 l/min.)
- 50 ÷ 220 bar (test setting: 160 bar at 5 l/min.)
- 180 ÷ 350 bar (test setting: 280 bar at 5 l/min.)

To perform setting of the valve see the pressure drop / flow diagram.

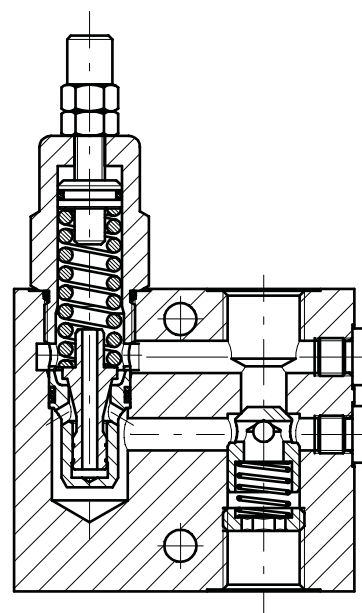
Working temperature:

- min. -25°C max. 90°C with standard BUNA N gaskets
- min. -20°C max. 120°C with optional VITON gaskets

• **RECOMMENDATIONS**

Fluid: best use mineral oil with viscosity ranging between 10 and 200 cSt.

• **CROSS SECTION**



**Filter:** see page Z.9000.000.

**Weight:**

- VDSRL 10-12=1.00 kg and 2.15 kg for aluminium and steel valves respectively
- VDSRL 10-34=1.10 kg and 2.41 kg for aluminium and steel valves respectively

**Cartridge used:** see page 1.1000.200.

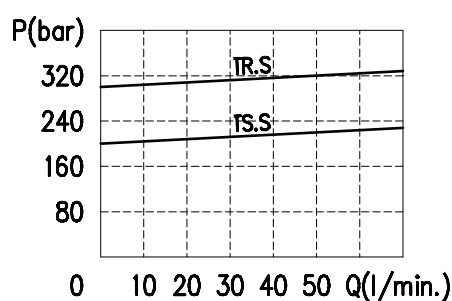
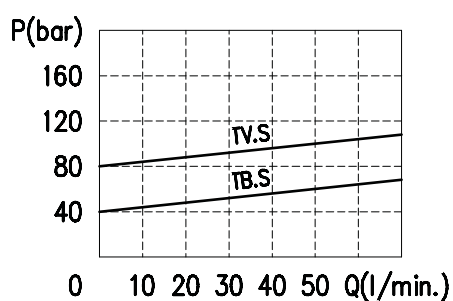
**Material:** internal components made out of high-grade steel duly treated and fabricated.

For more information please ask our technical office.

Variations and modifications of technical features and dimensions are reserved. **OLEOSTAR S.p.A.** also reserves the right to stop production of each and any model listed in the catalogue with no notice.

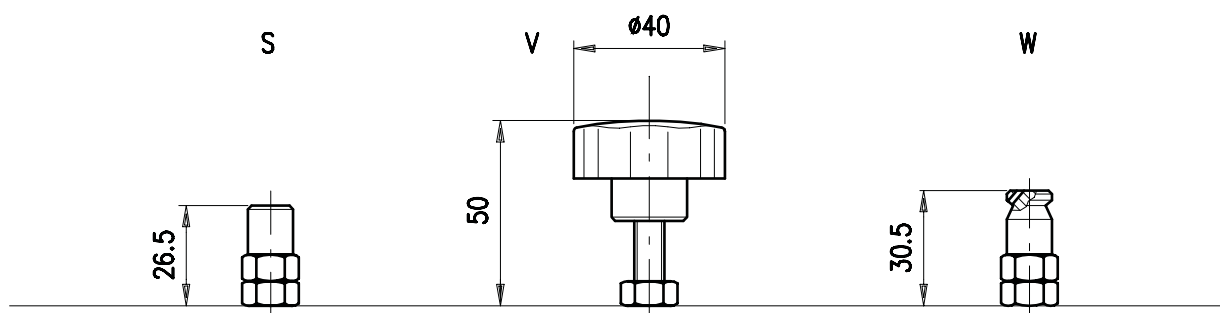
Copyrights on the text contained herein belong to **OLEOSTAR S.p.A.** . Partial and full reproductions or copies of this catalogue are forbidden.

## • RATING DIAGRAMS



Oil viscosity 46 cSt

## • ADJUSTMENTS



## • CODE NUMBER

VDSRL 10 -□□ / □□ . □ / □□

Port size	Pressure settings (bar)	Adjustment	Body material
12) 1/2" BSP 34) 3/4" BSP	TB) 5÷40 TV) 20÷80 TS) 50÷220 TR) 180÷350	S V W	_ Aluminium ac Steel