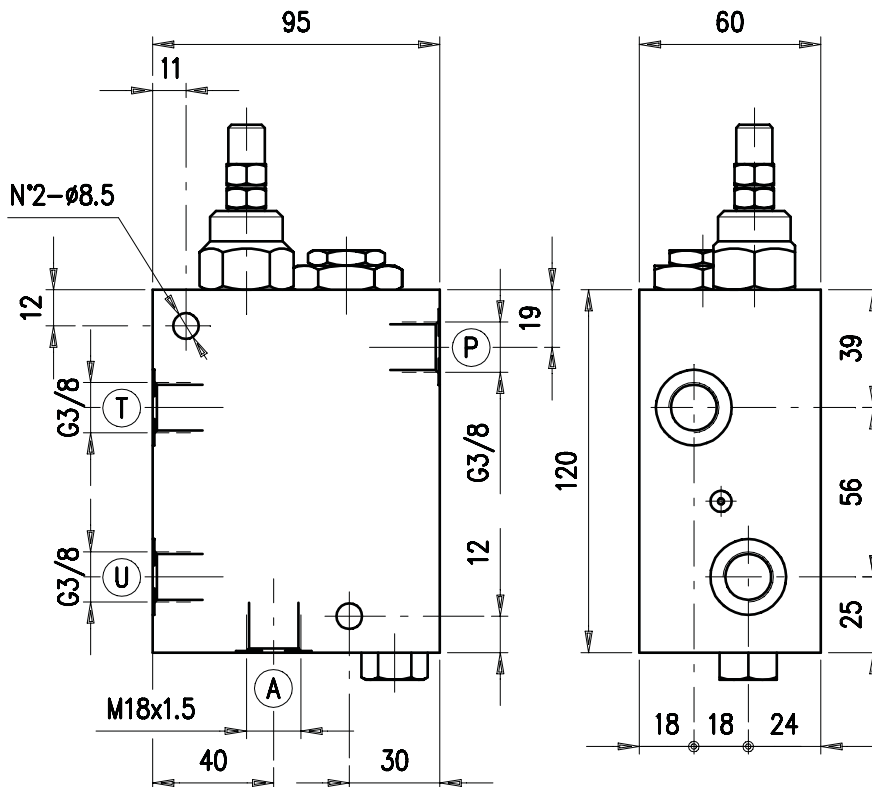
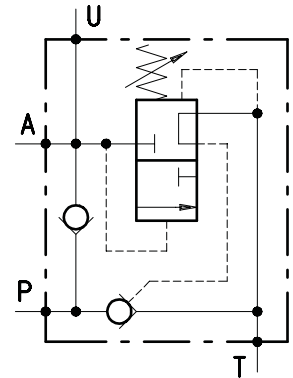


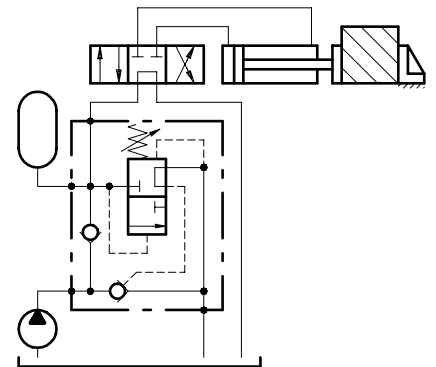
• **DIMENSIONS (mm)**



- **HYDRAULIC DIAGRAM**



- **ASSEMBLY DIAGRAM**



• DESCRIPTION

Automatic cut-off valve.

- **OPERATION**

Allows for pump discharge when the setting pressure is reached in U. Later the valve keeps constant pressure in U by means of the accumulator in A.

• PERFORMANCE

Maximum flow: 25 l/min.

Maximum Pressure: 250 bar (aluminium body).

Application range with standard springs:

- 5 ÷ 110 bar (test setting: 90 bar at 5 l/min.)
- 100 ÷ 250 bar (test setting: 200 bar at 5 l/min.)

To perform setting of the valve see the pressure drop / flow diagram.

Connection Pressure:

- 15% of the valve setting pressure for standard valves
- ask our technical office for special valves

Working temperature:

- min. -25°C max. 90°C with standard BUNA N gaskets
- min. -20°C max. 120°C with optional VITON gaskets

• **RECOMMENDATIONS:**

Fluid: best use mineral oil with viscosity ranging between 10 and 200 cSt.

Filter: see page Z.9000.000.

Weight: 2.15 kg (aluminium body)

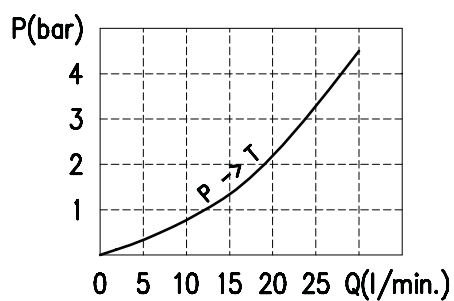
Material: internal components made out of high-grade steel duly treated and fabricated.

For more information please ask our technical office.

Variations and modifications of technical features and dimensions are reserved. **OLEOSTAR S.p.A.** also reserves the right to stop production of each and any model listed in the catalogue with no notice.

Copyrights on the text contained herein belong to **OLEOSTAR S.p.A.**. Partial and full reproductions or copies of this catalogue are forbidden.

• RATING DIAGRAMS



Oil viscosity 46 cSt

• CODE NUMBER

VDA 38 / □□ . S / □□

Pressure settings (bar)

TV) 5÷110
TR) 100÷250

Body material

_ Aluminium
ac Steel