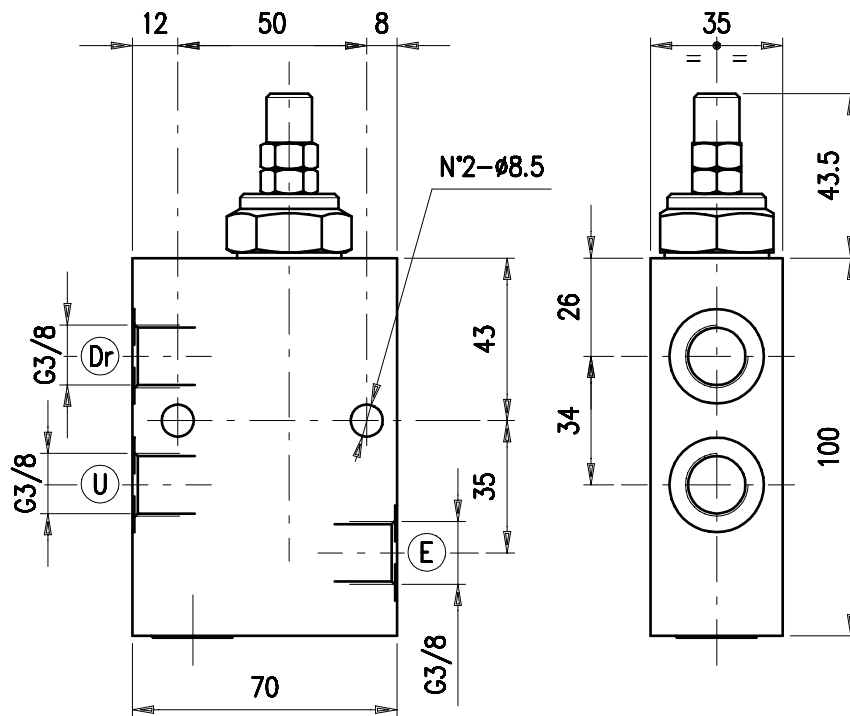
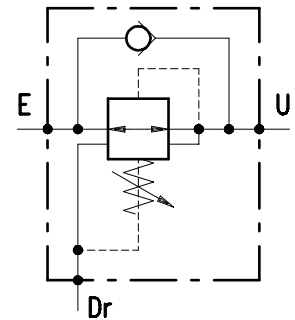


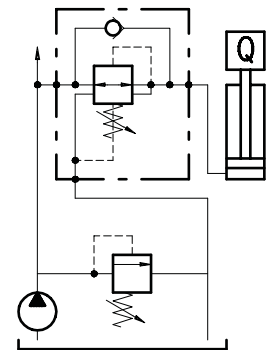
• **DIMENSIONS (mm)**



• **HYDRAULIC DIAGRAM**



• **ASSEMBLY DIAGRAM**



• **DESCRIPTION**

Direct control pressure adjustment valve with relieving and free return.

• **OPERATION**

Allows for free oil flow from E into U. When the pressure value set in U is achieved, the valve will shut the pass between E and U in order to maintain constant pressure in U. Should the pressure in U further exceed the setting value, the pass in E will shut and the connection in U will joint to Dr to relieve eventual pressure peaks. Single acting valve, allows for free oil return from U to E.

• **PERFORMANCE**

Maximum flow : 20 l/min.

Maximum Pressure:

- 210 bar (aluminium valve)
- 350 bar (steel valve)

Application range with standard springs:

- 5 ÷ 50 bar (test setting: 40 bar at 5 l/min.)
- 40 ÷ 110 bar (test setting: 90 bar at 5 l/min.)
- 100 ÷ 200 bar (test setting: 160 bar at 5 l/min.)

To perform setting of the valve see the pressure drop/ flow diagram.

Oil leak in Dr: 20 cc per minute at 150 bar pressure and oil viscosity 46 cSt.

Working temperature:

- min. -25°C max. 90°C with standard BUNA N gaskets
- min. -20°C max. 120°C with optional VITON gaskets

• **RECOMMENDATIONS:**

Fluid: best use mineral oil with viscosity ranging between 10 and 200 cSt.

Filter: see page Z.9000.000.

Weight: 0.85 kg and 1.73 kg for aluminium and steel valves respectively.

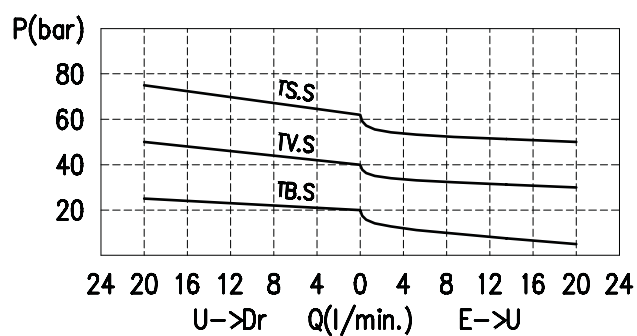
Material: internal components made out of high-grade steel duly treated and fabricated.

For more information please ask our technical office.

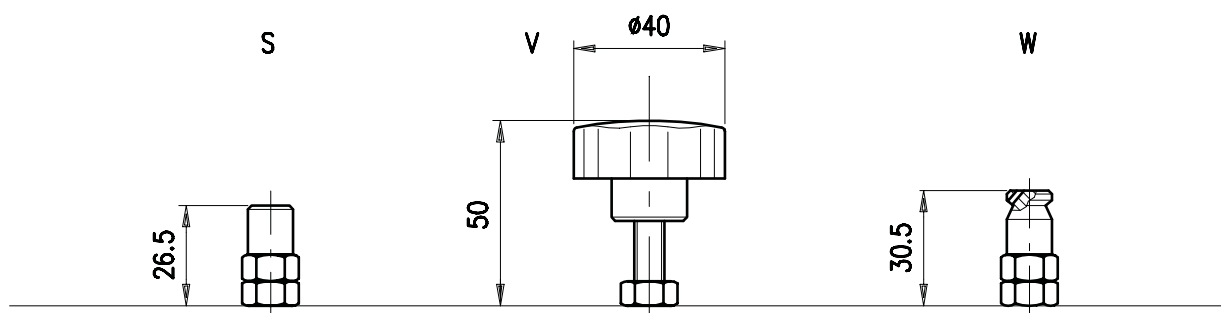
Variations and modifications of technical features and dimensions are reserved. **OLEOSTAR S.p.A.** also reserves the right to stop production of each and any model listed in the catalogue with no notice.

Copyrights on the text contained herein belong to **OLEOSTAR S.p.A.** . Partial and full reproductions or copies of this catalogue are forbidden.

• RATING DIAGRAMS



• ADJUSTMENTS



• CODE NUMBER

